

R | Painted Weft

PRODUCT SPECIFICATIONS



COLLECTION	Handloom
STYLE NUMBER	I483V
OVERALL THICKNESS	0.118 inches (3 mm)
EDGE PROFILE	Squared Edge
REFERENCE SPECIFICATION	ASTM F1700 Class II surface decorated vinyl plank Type B
FINISH	ExoGuard®
INSTALLATION TYPE	Dry Back
INSTALLATION	Glue Down
RECOMMENDED ADHESIVE	4200 (4 gal), 2200 (4 gal), 4252 (4 gal) or S150 SPRAY ADHS

Packaging

PLANK SIZE
PIECES /BOX
AREA /BOX
WEIGHT /BOX

US Units

9 inches W x 36 inches L
16
36 sq ft
37.92 lbs

Metric Units

22.9 cm W x 91.4 cm L
3.3 sq m
17.2 kg

Performance Testing

STATIC LOAD / ASTM F970
RESIDUAL INDENTATION / ASTM F1914
RESISTANCE TO CHEMICALS / ASTM F925
RADIANT PANEL / ASTM E648
COEFFICIENT OF FRICTION (ASTM D2047, SLIP RESISTANCE)

Passes (Modified), *1500 lbs
Passes
Passes
Passes, Class I
>0.6, meets the recommended static coefficient of friction for ADA walking surfaces and accessible routes

*Results are based on a laboratory test and used for comparative purposes. Real life load limit may vary.

Test Reports may be included or listed by the manufacturing/inventory style number as opposed to the noted selling style number.

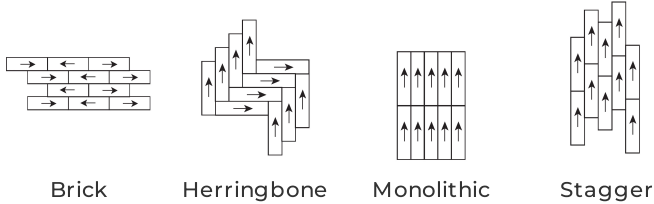
Warranty

15 Year Commercial Limited.

Please visit patcraft.com for the most current warranty information.

R | Painted Weft

Installation Methods



Brick

Herringbone

Monolithic

Stagger

[Installation Guidelines](#)

[Maintenance Guidelines](#)

Environmental Specifications

EMBODIED CARBON (CRADLE TO GATE)

8.16 kg CO₂/m²

Third Party Certifications

HEALTH PRODUCT DECLARATION (HPD)

[1,000 PPM Disclosure](#)

ENVIRONMENTAL PRODUCT DECLARATION (EPD)

[3rd Party Certified in Accordance with ISO 14025, EN 15804, & ISO 21930:2017](#)

FLOORSCORE®

[Certified](#)

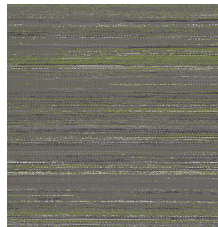
Available Colorways



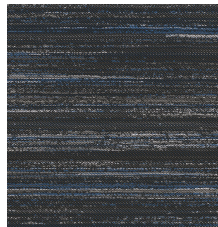
TAPESTRY 00130



THREAD 00250



YARN 00350



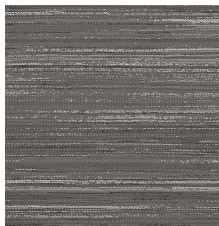
TEXTILE 00490



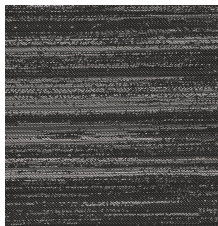
HEDDLE 00500



SPOOL 00540



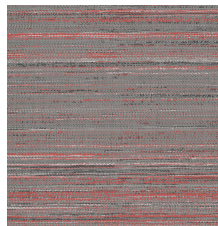
ROLLER 00570



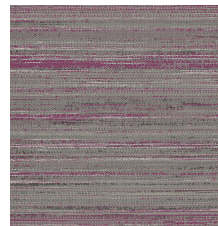
BEATER 00590



BRACE 00750



SHED 00850



SATIN 00950