



R | Sense

PRODUCT SPECIFICATIONS



COLLECTION	Within
STYLE NUMBER	I634V
CONSTRUCTION	Heavy Commercial Luxury Vinyl Tile
WEAR LAYER THICKNESS	20 mil / 0.02 inches (0.508 mm)
OVERALL THICKNESS	0.098 inches (2.5 mm)
EDGE PROFILE	Squared Edge
FINISH	ExoGuard®
INSTALLATION TYPE	Dry Back
INSTALLATION	Glue Down
RECOMMENDED ADHESIVE	4200 (4 gal), 2200 (4 gal), 4252 (4 gal) or SI50 SPRAY ADHS
INSTALLATION STATEMENT(S)	To minimize visual variation, install coordinating sheet and plank perpendicular to one another.

Packaging

PLANK SIZE
PIECES /BOX
AREA /BOX
WEIGHT /BOX

US Units

9 inches W x 36 inches L
20
45 sq ft
40.83 lbs

Metric Units

22.9 cm W x 91.4 cm L

4.2 sq m
18.5 kg

Performance Testing

STATIC LOAD / ASTM F970
RESIDUAL INDENTATION / ASTM F1914
RESISTANCE TO CHEMICALS / ASTM F925
RADIANT PANEL / ASTM E648
COEFFICIENT OF FRICTION (ASTM D2047, SLIP RESISTANCE)

Passes (Modified), *1500 lbs

Passes

Passes

Passes, Class I

>0.6, meets the recommended static coefficient of friction for ADA walking surfaces and accessible routes

*Results are based on a laboratory test and used for comparative purposes. Real life load limit may vary.

Test Reports may be included or listed by the manufacturing/inventory style number as opposed to the noted selling style number.

Warranty

15 Year Commercial Limited.

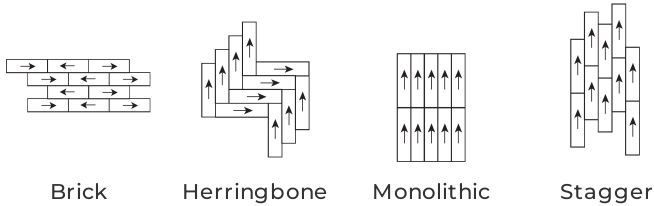
Commercial Limited Underbed Bond Warranty SI50/Lokworx+ Resilient.

Please visit patcraft.com for the most current warranty information.



R | Sense

Installation Methods



Brick

Herringbone

Monolithic

Stagger

[Installation Guidelines](#)

[Maintenance Guidelines](#)

Environmental Specifications

EMBODIED CARBON (CRADLE TO GATE)

6.05 kg CO₂/m²

Third Party Certifications

HEALTH PRODUCT DECLARATION (HPD)

[1000 ppm Disclosure](#)

ENVIRONMENTAL PRODUCT DECLARATION (EPD)

[3rd Party Certified in Accordance with ISO 14025, EN 15804, & ISO 21930:2017](#)

FLOORSCORE®

[Certified](#)

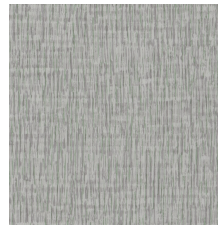
Available Colorways



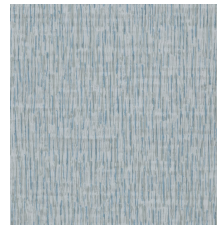
EASE-V1 00100
V1 - UNIFORM
APPEARANCE



STRENGTH-V1 00115
V1 - UNIFORM
APPEARANCE



CARE-V1 00300
V1 - UNIFORM
APPEARANCE



STRIDE-V1 00400
V1 - UNIFORM
APPEARANCE



ADVANCE-V1 00450
V1 - UNIFORM
APPEARANCE



ESTEEM-V1 00520
V1 - UNIFORM
APPEARANCE



ENGAGE-V1 00550
V1 - UNIFORM
APPEARANCE



PROMISE-V1 00700
V1 - UNIFORM
APPEARANCE

Color and Visual Variation Index

Shade and texture variation is inherent in all resilient products and can vary significantly from piece to piece. Samples should be used to assess color.

