



R | STRATIFIED + PRODUCT SPECIFICATIONS



COLLECTION	Stratified Plus
STYLE NUMBER	I321V
CONSTRUCTION	Heavy Commercial Luxury Vinyl Tile with Fiberglass
WEAR LAYER THICKNESS	20 mil / 0.02 inches (0.508 mm)
OVERALL THICKNESS	0.098 inches (2.5 mm)
EDGE PROFILE	Squared Edge
REFERENCE SPECIFICATION	ASTM F1700 Class III printed film vinyl plank Type B (embossed)
FINISH	ExoGuard®
INSTALLATION TYPE	Dry Back
INSTALLATION	Glue Down
RECOMMENDED ADHESIVE	4200 (4 gal), 2200 (4 gal), 4252 (4 gal) or S150 SPRAY ADHS

Packaging

PLANK SIZE
PIECES /BOX
AREA /BOX
WEIGHT /BOX

US Units

6 inches W x 24 inches L
36
35.95 sq ft
31.75 lbs

Metric Units

15.2 cm W x 61 cm L

3.3 sq m
14.4 kg

Performance Testing

STATIC LOAD / ASTM F970

Passes (Modified), *2000 lbs

RESISTANCE TO CHEMICALS / ASTM F925

Passes

RADIANT PANEL / ASTM E648

Passes, Class I

*Results are based on a laboratory test and used for comparative purposes. Real life load limit may vary.

Test Reports may be included or listed by the manufacturing/inventory style number as opposed to the noted selling style number.

Warranty

15 Year Commercial Limited.

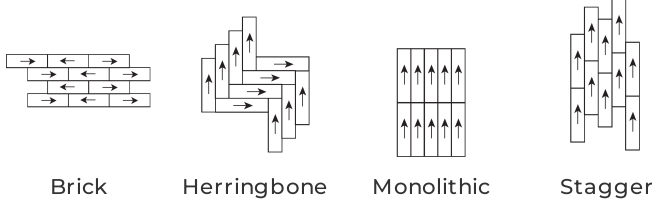
Commercial Limited Underbed Bond Warranty S150/Lokworx+ Resilient.

Please visit patcraft.com for the most current warranty information.



R | STRATIFIED +

Installation Methods



Brick

Herringbone

Monolithic

Stagger

[Installation Guidelines](#)

[Maintenance Guidelines](#)

Environmental Specifications

EMBODIED CARBON (CRADLE TO GATE)

7.45 kg CO₂/m²

Third Party Certifications

HEALTH PRODUCT DECLARATION (HPD)

[1000 ppm Disclosure](#)

ENVIRONMENTAL PRODUCT DECLARATION (EPD)

[3rd Party Certified in Accordance with ISO 14025, EN 15804, & ISO 21930:2017](#)

FLOORSCORE®

[Certified](#)

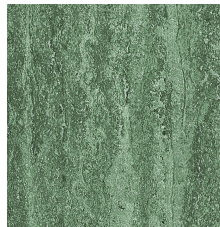
Available Colorways



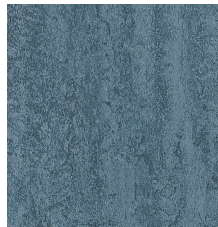
MIST 00100



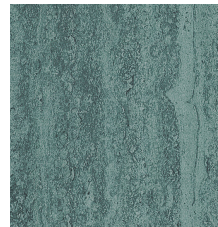
SAND 00200



EMERALD 00380



AQUA 00430



CAPRI 00450



SAPPHIRE 00480



FROST 00500



PEWTER 00550



GRAPHITE 00590



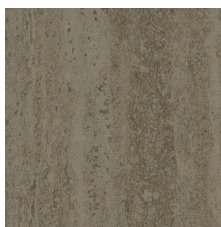
CITRINE 00620



PLATEAU 00750



DUSKY 00770



SHALE 00790



AMBER 00850



GARNET 00880



AMETHYST 00980