

# R | Tactility

## PRODUCT SPECIFICATIONS

<b>COLLECTION</b>	Interweave	
<b>STYLE NUMBER</b>	I621V	
	<b>US Units</b>	<b>Metric Units</b>
<b>OVERALL THICKNESS</b>	0.118 inches	3 mm
<b>EDGE PROFILE</b>	Squared Edge	
<b>FINISH</b>	ExoGuard®	
<b>INSTALLATION TYPE</b>	Dry Back	
<b>INSTALLATION</b>	Glue Down	
<b>RECOMMENDED ADHESIVE</b>	4200 (4 gal), 2200 (4 gal), 4252 (4 gal) or S150	

## Packaging

<b>PLANK SIZE</b>	9 inches W x 36 inches L	22.9 cm W x 91.4 cm L
<b>PIECES /BOX</b>	16	
<b>AREA /BOX</b>	36 sq ft	3.3 sq m
<b>WEIGHT /BOX</b>	37.92 lbs	17.2 kg

## Performance Testing

<b>STATIC LOAD / ASTM F970</b>	Passes (Modified), *1500 lbs
<b>RESISTANCE TO CHEMICALS / ASTM F925</b>	Passes
<b>RADIANT PANEL / ASTM E648</b>	Passes, Class I
<b>COEFFICIENT OF FRICTION (ASTM D2047, SLIP RESISTANCE)</b>	≥0.5, meets the recommended static coefficient of friction for ADA walking surfaces

\*Results are based on a laboratory test and used for comparative purposes. Real life load limit may vary.

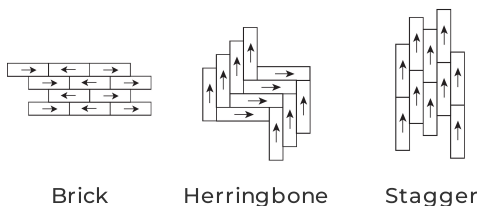
Test Reports may be included or listed by the manufacturing/inventory style number as opposed to the noted selling style number.

## Warranty

15 Year Commercial Limited.

Please visit [patcraft.com](https://patcraft.com) for the most current warranty information.

## Installation Methods



[Installation Guidelines](#)

[Maintenance Guidelines](#)

## Environmental Specifications

<b>EMBODIED CARBON (CRADLE TO GATE)</b>	8.16 kg CO <sub>2</sub> /m <sup>2</sup>
---	---

# R | Tactility

## Third Party Certifications

HEALTH PRODUCT DECLARATION (HPD)  
ENVIRONMENTAL PRODUCT DECLARATION (EPD)  
FLOORSCORE®

1,000 PPM Disclosure  
3rd Party Certified in Accordance with ISO 14025, EN 15804, & ISO 21930:2017  
Certified

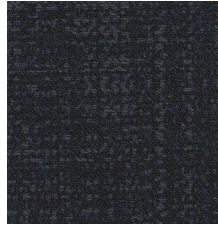
## Available Colorways



BALANCE 00135



LAMM 00155



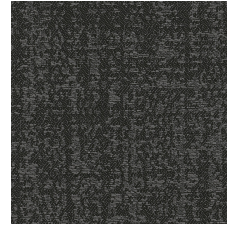
SPUN 00495



TABBY 00515



RADDLE 00565



SELVAGE 00585



TREADLE 00725



FIBER 00795