



R | Treeline 20mil

PRODUCT SPECIFICATIONS



COLLECTION	Treeline
STYLE NUMBER	I707V
CONSTRUCTION	Heavy Commercial Luxury Vinyl Tile
WEAR LAYER THICKNESS	20 mil / 0.02 inches (0.508 mm)
OVERALL THICKNESS	0.098 inches (2.5 mm)
EDGE PROFILE	Squared Edge
FINISH	ExoGuard®
INSTALLATION TYPE	Dry Back
INSTALLATION	Glue Down
RECOMMENDED ADHESIVE	4200 (4 gal), 2200 (4 gal), 4252 (4 gal) or S150

Packaging

	US Units	Metric Units
PLANK SIZE	7 inches W x 48 inches L	17.8 cm W x 121.9 cm L
PIECES /BOX	15	
AREA /BOX	35 sq ft	3.3 sq m
WEIGHT /BOX	30.36 lbs	13.8 kg

Performance Testing

RESIDUAL INDENTATION / ASTM F1914	Passes
RADIANT PANEL / ASTM E648	Passes, Class I
SMOKE DENSITY / ASTM E662	Passes
COEFFICIENT OF FRICTION (ASTM D2047, SLIP RESISTANCE)	>0.6, meets the recommended static coefficient of friction for ADA walking surfaces and accessible routes

Test Reports may be included or listed by the manufacturing/inventory style number as opposed to the noted selling style number.

Warranty

[15 Year Commercial Limited.](#)

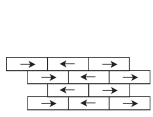
[Commercial Limited Underbed Bond Warranty S150/Lokworx+ Resilient.](#)

Please visit [patcraft.com](https://www.patcraft.com) for the most current warranty information.

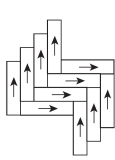


R | Treeline 20mil

Installation Methods



Brick



Herringbone



Stagger

[Installation Guidelines](#)

[Maintenance Guidelines](#)

Environmental Specifications

EMBODIED CARBON (CRADLE TO GATE)

7.45 kg CO₂/m²

Third Party Certifications

HEALTH PRODUCT DECLARATION (HPD)

[1,000 PPM Disclosure](#)

ENVIRONMENTAL PRODUCT DECLARATION (EPD)

[3rd Party Certified in Accordance with ISO 14025, EN 15804, & ISO 21930:2017](#)

FLOORSCORE®

[Certified](#)

Available Colorways



CREAM-V2 00127
V2 - SLIGHT VARIATION



BARE-V2 00132
V2 - SLIGHT VARIATION



GINGER-V2 00146
V2 - SLIGHT VARIATION



HONEY-V2 00163
V2 - SLIGHT VARIATION



MOONLIGHT-V2 00527
V2 - SLIGHT VARIATION



RUNE-V2 00531
V2 - SLIGHT VARIATION



ELEMENT-V2 00549
V2 - SLIGHT VARIATION



NICKEL-V2 00574
V2 - SLIGHT VARIATION



CAMEL-V2 00713
V2 - SLIGHT VARIATION



CAIRN-V2 00764
V2 - SLIGHT VARIATION



CLOVE-V2 00781
V2 - SLIGHT VARIATION



CHESTNUT-V2 00837
V2 - SLIGHT VARIATION

Color and Visual Variation Index

Shade and texture variation is inherent in all resilient products and can vary significantly from piece to piece. Samples should be used to assess color.



Uniform Appearance



Slight Variation



Moderate Variation



Substantial Variation