

**R** | **Wooden Warp** PRODUCT SPECIFICATIONS



<b>COLLECTION</b>	Handloom
<b>STYLE NUMBER</b>	1484V
<b>OVERALL THICKNESS</b>	0.118 inches (3 mm)
<b>EDGE PROFILE</b>	Squared Edge
<b>REFERENCE SPECIFICATION</b>	ASTM F1700 Class II surface decorated vinyl plank Type B
<b>FINISH</b>	ExoGuard®
<b>INSTALLATION TYPE</b>	Dry Back
<b>INSTALLATION</b>	Glue Down
<b>RECOMMENDED ADHESIVE</b>	4200 (4 gal), 2200 (4 gal), 4252 (4 gal) or S150 SPRAY ADHS

**Packaging**

	<b>US Units</b>	<b>Metric Units</b>
<b>PLANK SIZE</b>	9 inches W x 36 inches L	22.9 cm W x 91.4 cm L
<b>PIECES /BOX</b>	16	
<b>AREA /BOX</b>	36 sq ft	3.3 sq m
<b>WEIGHT /BOX</b>	37.92 lbs	17.2 kg

**Performance Testing**

<b>STATIC LOAD / ASTM F970</b>	Passes (Modified), *1500 lbs
<b>RESIDUAL INDENTATION / ASTM F1914</b>	Passes
<b>RESISTANCE TO CHEMICALS / ASTM F925</b>	Passes
<b>RADIANT PANEL / ASTM E648</b>	Passes, Class I
<b>COEFFICIENT OF FRICTION (ASTM D2047, SLIP RESISTANCE)</b>	>0.6, meets the recommended static coefficient of friction for ADA walking surfaces and accessible routes

\*Results are based on a laboratory test and used for comparative purposes. Real life load limit may vary.

Test Reports may be included or listed by the manufacturing/inventory style number as opposed to the noted selling style number.

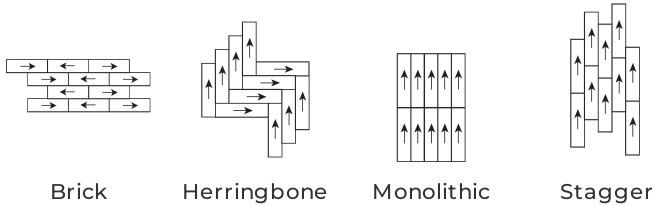
**Warranty**

15 Year Commercial Limited.

Please visit [patcraft.com](http://patcraft.com) for the most current warranty information.

# R | Wooden Warp

## Installation Methods



Brick

Herringbone

Monolithic

Stagger

[Installation Guidelines](#)

[Maintenance Guidelines](#)

## Environmental Specifications

**EMBODIED CARBON (CRADLE TO GATE)** 8.16 kg CO<sub>2</sub>/m<sup>2</sup>

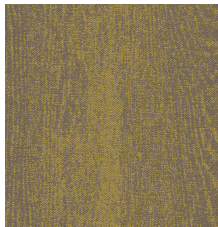
## Third Party Certifications

**HEALTH PRODUCT DECLARATION (HPD)** 1,000 PPM Disclosure  
**ENVIRONMENTAL PRODUCT DECLARATION (EPD)** 3rd Party Certified in Accordance with ISO 14025, EN 15804, & ISO 21930:2017  
**FLOORSCORE®** Certified

## Available Colorways



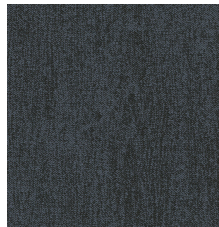
LOOM 00120



HARNESS 00275



REED 00375



SHUTTLE 00475



CLOTH 00520



TWILL 00550



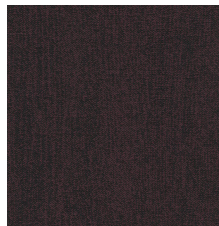
BOBBIN 00580



DOBBY 00740



JACQUARD 00775



BEAM 00875