



R | Withdraw

PRODUCT SPECIFICATIONS

COLLECTION	Subtractive Layers	
STYLE NUMBER	I418V	
CONSTRUCTION	Heavy Commercial Luxury Vinyl Tile	
	US Units	Metric Units
WEAR LAYER THICKNESS	20 mil / 0.02 inches	0.508 mm
OVERALL THICKNESS	0.197 inches	5 mm
EDGE PROFILE	Squared Edge	
REFERENCE SPECIFICATION	ASTM F1700 Class III printed film vinyl plank Type B (embossed)	
FINISH	ExoGuard®	
INSTALLATION TYPE	Dry Back	
INSTALLATION	Glue Down	
RECOMMENDED ADHESIVE	4200 (4 gal), 2200 (4 gal), 4252 (4 gal) or S150 SPRAY ADHS	

Packaging

PLANK SIZE	11.81 inches W x 23.62 inches L	30 cm W x 60 cm L
PIECES /BOX	11	
AREA /BOX	21.32 sq ft	2 sq m
WEIGHT /BOX	41.9 lbs	19 kg

Performance Testing

STATIC LOAD / ASTM F970	Passes (Modified), *1000 lbs
RESIDUAL INDENTATION / ASTM F1914	Passes
RESISTANCE TO CHEMICALS / ASTM F925	Passes
RADIANT PANEL / ASTM E648	Passes, Class I
COEFFICIENT OF FRICTION (ASTM D2047, SLIP RESISTANCE)	>0.6, meets the recommended static coefficient of friction for ADA walking surfaces and accessible routes

*Results are based on a laboratory test and used for comparative purposes. Real life load limit may vary.

Test Reports may be included or listed by the manufacturing/inventory style number as opposed to the noted selling style number.

Warranty

15 Year Commercial Limited.

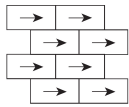
Commercial Limited Underbed Bond Warranty S150/Lokworx+ Resilient.

Please visit patcraft.com for the most current warranty information.

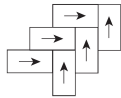


R | Withdraw

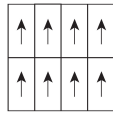
Installation Methods



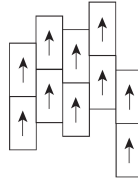
Brick



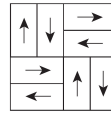
Herringbone



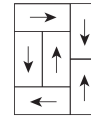
Monolithic



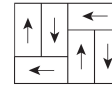
Stagger



Basketweave



Boxed In



Half Basketweave

[Installation Guidelines](#)

[Maintenance Guidelines](#)

Environmental Specifications

EMBODIED CARBON (CRADLE TO GATE)

6.05 kg CO₂/m²

Third Party Certifications

HEALTH PRODUCT DECLARATION (HPD)

[1000 ppm Disclosure](#)

ENVIRONMENTAL PRODUCT DECLARATION (EPD)

[3rd Party Certified in Accordance with ISO 14025, EN 15804, & ISO 21930:2017](#)

FLOORSCORE®

[Certified](#)

Available Colorways



UNBLEACHED
TITANIUM 00100



DESERT TAN 00160



PURE GRAY 00520



COOL GRAY 00560



MOUNTAIN GRAY
00565



BARELY BLACK 00580



GRAY BROWN 00740



SEPIA 00760