

M | Big Splash! PRODUCT SPECIFICATIONS

| | |
|------------------------------|---------------------------------|
| COLLECTION | Big Splash |
| STYLE NUMBER | 10166 |
| PRODUCT TYPE | Tile |
| CONSTRUCTION | Pattern Loop |
| FIBER TYPE | EcoSolution Q® Nylon |
| DYE METHOD | 80% Solution Dyed 20% Yarn Dyed |
| PRIMARY BACKING | Non-Woven Synthetic |
| SECONDARY BACKING | EcoWorx® Tile |
| PROTECTIVE TREATMENTS | SSP® Shaw Soil Protection |
| GSA APPROVED PRODUCT | Yes |

| | US Units | Metric Units |
|--------------------------------|-------------------------|-------------------------|
| PRODUCT SIZE | 24 inches x 24 inches | 60.96 cm x 60.96 cm |
| AREA PER BOX | 48 ft ² | 4.46 m ² |
| PIECES PER BOX | 12 | |
| GAUGE | 1/10 inches | 39.37 per 10 cm |
| STITCHES | 9.67 per inches | 38.06 per 10 cm |
| FINISHED PILE THICKNESS | 0.1 inches | 2.54 mm |
| AVERAGE DENSITY | 9360 oz/yd ³ | 0.35 g/cm ³ |
| KILOTEX | | 12.38 |
| TOTAL THICKNESS | 0.275 inches | 6.99 mm |
| TUFTED YARN WEIGHT | 26 oz/yd ² | 881.55 g/m ² |

Performance Testing

| | |
|---------------------------------|---|
| PILL TEST | Pass |
| RADIANT PANEL | Class I |
| NBS SMOKE | Less than 450 |
| ELECTROSTATIC PROPENSITY | Less than 3.5 kv |
| CRI GREENLABEL PLUS | GLP9968 |
| ADA COMPLIANCE | >0.6, meets the recommended static coefficient of friction for ADA walking surfaces and accessible routes |

Test Reports may be included or listed by the manufacturing/inventory style number as opposed to the noted selling style number.

Warranty

[Lifetime Commercial Limited](#)

Please visit [patcraft.com](https://www.patcraft.com) for the most current warranty information.

Installation Methods



Monolithic

[Installation Guidelines](#)

[Maintenance Guidelines](#)

M | Big Splash!

Environmental Specifications

RECYCLABILITY 100% recyclable

Materials

Ingredients

DOES NOT CONTAIN does not contain PVC, phthalates or PBD/PBDE

Recycled Content

TOTAL RECYCLED CONTENT (BY WEIGHT) 33%

PRE-CONSUMER 33%

POST-CONSUMER 0%

COUNTRY OF ORIGIN (MANUFACTURER) USA

Meets or exceeds all local and national regulations in country of manufacture. Manufactured in an ISO9001 & ISO14001 certified facility or equivalent. Recycled content is calculated using system allocation, mass balance, and direct insertion. The actual recycled content in this product will likely vary. For more information email info@patcraft.com.

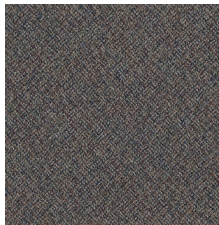
Third Party Certifications

USGBC LEED contributes

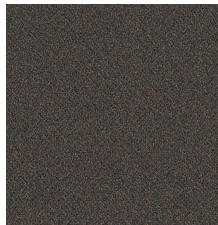
BUILDING RESEARCH ESTABLISHMENT certified

GOOD ENVIRONMENTAL CHOICE AUSTRALIA certified

Available Colorways



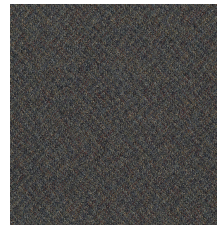
SPIRAL 00102



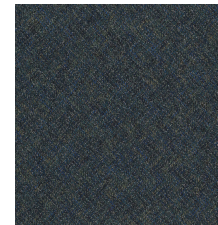
HIGH SCORE 00120



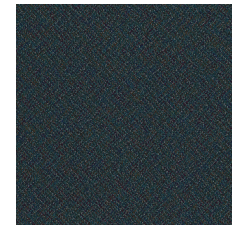
RIP 00202



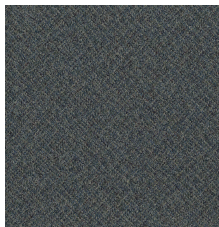
POP 00311



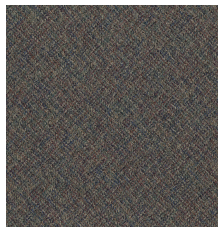
ROTATION 00313



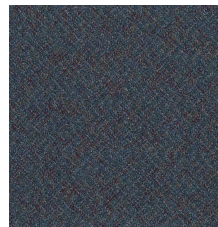
WASH 00314



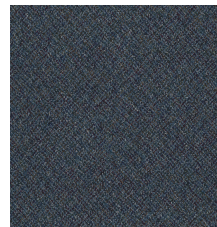
FLIGHT 00320



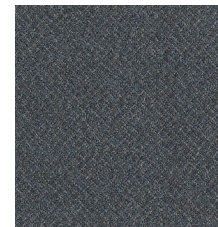
SPRINGBOARD 00321



EXECUTION 00415



DIVE-SHEET 00418



SMACK 00506

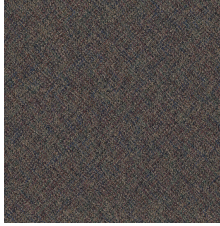


PLATFORM 00517



Specifications are subject to nominal manufacturing variances. Material supply and/or manufacturing processes may necessitate specification changes without notice. This carpet is an exclusive design and may not be duplicated in any manner. Use of this design in the creation of another carpet design is also strictly prohibited. Visit patcraft.com/testing for more information.

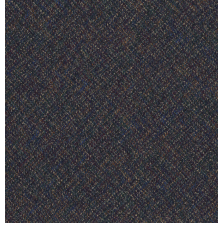
M | Big Splash!



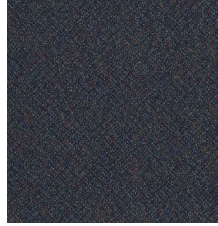
ANGLE 00603



SEQUENCE 00804



BELLY FLOP 00813



PERFECT ENTRY 00909