



# M | Eastern Facade

## PRODUCT SPECIFICATIONS



<b>COLLECTION</b>	Urban Relief
<b>STYLE NUMBER</b>	I0515
<b>PRODUCT TYPE</b>	Tile
<b>CONSTRUCTION</b>	Multi-Level Pattern Loop
<b>FIBER TYPE</b>	EcoSolution Q® Nylon
<b>DYE METHOD</b>	100% Solution Dyed
<b>PRIMARY BACKING</b>	Non-Woven Synthetic
<b>SECONDARY BACKING</b>	StrataWorx® Tile
<b>PROTECTIVE TREATMENTS</b>	SSP® Shaw Soil Protection
<b>GSA APPROVED PRODUCT</b>	Yes

### PRODUCT SIZE

### AREA PER BOX

### PIECES PER BOX

### GAUGE

### STITCHES

### FINISHED PILE THICKNESS

### AVERAGE DENSITY

### KILOTEX

### TOTAL THICKNESS

### TUFTED YARN WEIGHT

### US Units

24 inches x 24 inches

80 ft<sup>2</sup>

20

1/12 inches

8.5 per inches

0.059 inches

10373 oz/yd<sup>3</sup>

0.23 inches

17 oz/yd<sup>2</sup>

### Metric Units

60.96 cm x 60.96 cm

7.43 m<sup>2</sup>

47.24 per 10 cm

33.46 per 10 cm

1.50 mm

0.38 g/cm<sup>3</sup>

8.8

5.84 mm

576.40 g/m<sup>2</sup>

## Performance Testing

### PILL TEST

Pass

### RADIANT PANEL

Class I

### NBS SMOKE

Less than 450

### ELECTROSTATIC PROPENSITY

Less than 3.5 kv

### CRI GREENLABEL PLUS

GLP2671

### ADA COMPLIANCE

>0.6, meets the recommended static coefficient of friction for ADA walking surfaces and accessible routes

Test Reports may be included or listed by the manufacturing/inventory style number as opposed to the noted selling style number.

## Warranty

### 15 Year Commercial Limited Warranty

Please visit [patcraft.com](https://www.patcraft.com) for the most current warranty information.



# M | Eastern Facade

## Installation Methods



Quarter Turn



Random



Monolithic



Brick



Ashlar

[Installation Guidelines](#)

[Maintenance Guidelines](#)

## Environmental Specifications

### RECYCLABILITY

100% recyclable

### EMBODIED CARBON (CRADLE TO GATE)

7.79 Kg CO<sub>2</sub>/M<sup>2</sup>

## Materials

### Ingredients

#### DOES NOT CONTAIN

does not contain PVC, phthalates or PBD/PBDE

### Recycled Content

#### TOTAL RECYCLED CONTENT (BY WEIGHT)

23%

#### PRE-CONSUMER

23%

#### POST-CONSUMER

0%

#### COUNTRY OF ORIGIN (MANUFACTURER)

USA

Meets or exceeds all local and national regulations in country of manufacture. Manufactured in an ISO9001 & ISO14001 certified facility or equivalent. Recycled content is calculated using system allocation, mass balance, and direct insertion. The actual recycled content in this product will likely vary. For more information email [info@patcraft.com](mailto:info@patcraft.com).

## Third Party Certifications

#### CRADLE TO CRADLE CERTIFIED®

[Silver Level \(Version 3.1\)](#)

#### HEALTH PRODUCT DECLARATION (HPD)

[1,000 ppm Disclosure](#)

#### ENVIRONMENTAL PRODUCT DECLARATION (EPD)

[3rd Party Certified in Accordance with ISO14044, ISO14025 & EN15804](#)

#### NSF 140

[Gold](#)

#### CRI GREEN LABEL PLUS (GLP)

[GLP9968](#)

#### USGBC LEED

contributes

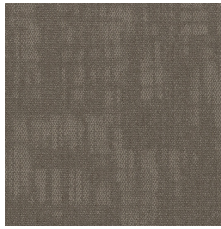


Specifications are subject to nominal manufacturing variances. Material supply and/or manufacturing processes may necessitate specification changes without notice. This carpet is an exclusive design and may not be duplicated in any manner. Use of this design in the creation of another carpet design is also strictly prohibited. Visit [patcraft.com/testing](https://patcraft.com/testing) for more information.

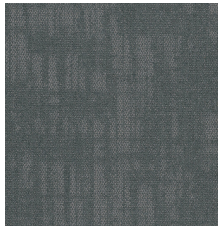


# M | Eastern Facade

## Available Colorways



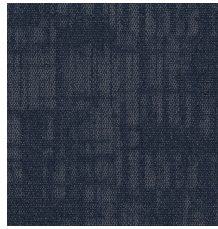
RURAL 00150



SUBURBIA 00375



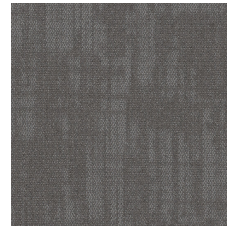
GRAFFITI 00430



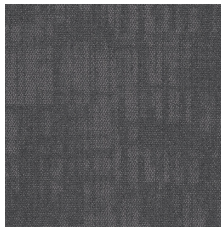
TRANSIT 00450



SKYSCRAPER 00500



CONCRETE 00510



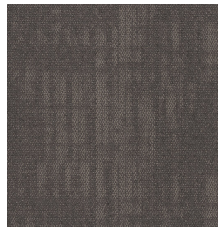
SUBWAY 00525



TUNNEL 00550



FOUNDRY 00570



RAILCAR 00700