

M | Contour Fragment PRODUCT SPECIFICATIONS



| | |
|--------------------------|--------------------------|
| COLLECTION | Textural Perception |
| STYLE NUMBER | 10650 |
| PRODUCT TYPE | Plank |
| CONSTRUCTION | Multi-Level Pattern Loop |
| FIBER TYPE | EcoSolution Q100® Nylon |
| DYE METHOD | 100% Solution Dyed |
| PRIMARY BACKING | Non-Woven Synthetic |
| SECONDARY BACKING | EcoWorx® Tile |

| |
|--------------------------------|
| PRODUCT SIZE |
| AREA PER BOX |
| PIECES PER BOX |
| GAUGE |
| STITCHES |
| FINISHED PILE THICKNESS |
| AVERAGE DENSITY |
| KILOTEX |
| TOTAL THICKNESS |
| TUFTED YARN WEIGHT |

| |
|-------------------------|
| US Units |
| 18 inches x 36 inches |
| 45 ft ² |
| 10 |
| 1/12 inches |
| 9 per inches |
| 0.15 inches |
| 4320 oz/yd ³ |
| 0.25 inches |
| 18 oz/yd ² |

| |
|-------------------------|
| Metric Units |
| 45.72 cm x 91.44 cm |
| 4.18 m ² |
| 47.24 per 10 cm |
| 35.43 per 10 cm |
| 3.81 mm |
| 0.16 g/cm ³ |
| 10.58 |
| 6.35 mm |
| 610.30 g/m ² |

Performance Testing

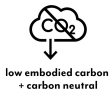
| | |
|---------------------------------|-----------------------------------------------------------------------------------------------------------|
| PILL TEST | Pass |
| RADIANT PANEL | Class I |
| NBS SMOKE | Less than 450 |
| ELECTROSTATIC PROPENSITY | Less than 3.5 kv |
| CRI GREENLABEL PLUS | GLP9968 |
| ADA COMPLIANCE | >0.6, meets the recommended static coefficient of friction for ADA walking surfaces and accessible routes |

Test Reports may be included or listed by the manufacturing/inventory style number as opposed to the noted selling style number.

Warranty

Lifetime Commercial Limited

Please visit patcraft.com for the most current warranty information.



M | Contour Fragment

Installation Methods



Basketweave



Herringbone



Boxed In



Brick



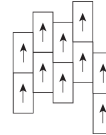
Half Basketweave



Monolithic



Ashlar



Stagger

[Installation Guidelines](#)

[Maintenance Guidelines](#)

EMBODIED CARBON (CRADLE TO GATE)

3.71 Kg CO₂/M²

LIFE-CYCLE CARBON EMISSIONS

Carbon Neutral

Materials

Recycled Content

TOTAL RECYCLED CONTENT (BY WEIGHT)

57%

PRE-CONSUMER

57%

POST-CONSUMER

0%

COUNTRY OF ORIGIN (MANUFACTURER)

USA

Meets or exceeds all local and national regulations in country of manufacture. Manufactured in an ISO9001 & ISO14001 certified facility or equivalent. Recycled content is calculated using system allocation, mass balance, and direct insertion. The actual recycled content in this product will likely vary. For more information email info@patcraft.com.

Third Party Certifications

CRADLE TO CRADLE CERTIFIED®

Silver Level (Version 4.0)

HEALTH PRODUCT DECLARATION (HPD)

1,000 ppm Disclosure

ENVIRONMENTAL PRODUCT DECLARATION (EPD)

3rd Party Certified in Accordance with ISO14044, ISO14025 & EN15804

DECLARE

LBC Compliant

NSF 140

Gold

CRI GREEN LABEL PLUS (GLP)

GLP9968

ENVIRONMENTAL GUARANTEE

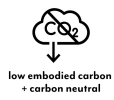
The products in this collection are In The Loop – they are fully recyclable through our re[TURN]® Reclamation Program. We will facilitate the pick-up and free return of a minimum of 100 SY of EcoWorx®, 500 SY of ReWorx™ products or 5,000 SF of Shaw-manufactured resilient products to be recycled. Participating in re[TURN]® lowers carbon emissions of these products by reducing virgin materials needed for making new products.

PRODUCT PACKAGING

100% Recyclable



Specifications are subject to nominal manufacturing variances. Material supply and/or manufacturing processes may necessitate specification changes without notice. This carpet is an exclusive design and may not be duplicated in any manner. Use of this design in the creation of another carpet design is also strictly prohibited. Visit patcraft.com/testing for more information.



M | Contour Fragment

Available Colorways



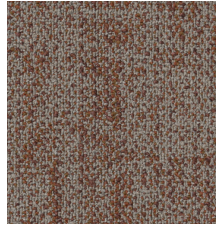
SAGE 00130



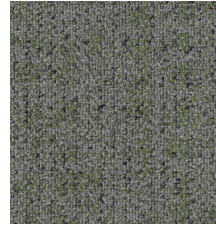
FLINT 00155



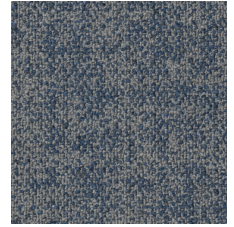
TOFFEE 00175



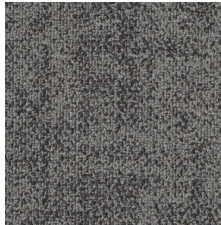
TERRACOTTA 00180



MATCHA 00310



CERULEAN 00410



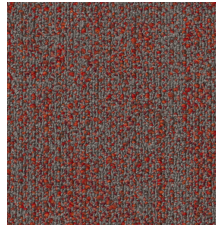
CHROME 00510



MARLIN 00540



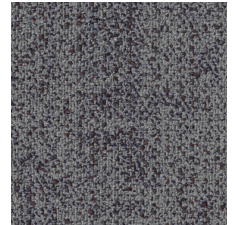
JUNIPER 00550



SCARLET 00585



RAVEN 00590



AUBERGINE 00910