

COLLECTION LOOKBOOK /

patcraft®

COLOR YOUR WORLD

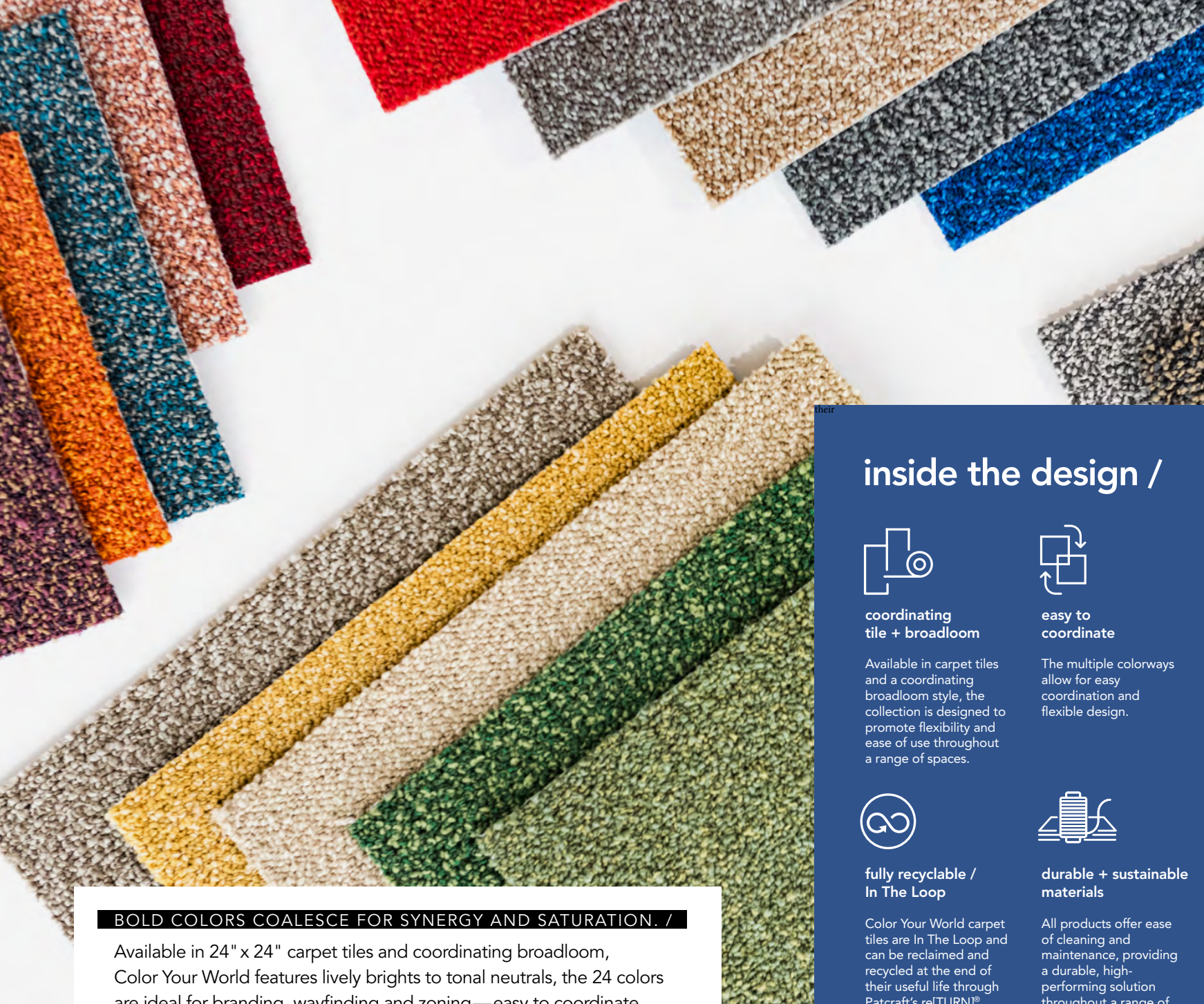
24 x 24
Broadloom


carpet tile + broadloom

Chromatic composition.

Color Your World is a vibrant carpet tile and broadloom collection designed for creative and energetic spaces. Expanding upon the collection with a refreshed color line that seamlessly pairs with complementary product offerings, Color Your World now includes 24 colorways of modern neutrals and lively brights. The collection features a textural, near solid visual, allowing for saturated shades and tonal depth ideal for use with accents and product coordination.





BOLD COLORS COALESCE FOR SYNERGY AND SATURATION. /

Available in 24" x 24" carpet tiles and coordinating broadloom, Color Your World features lively brights to tonal neutrals, the 24 colors are ideal for branding, wayfinding and zoning—easy to coordinate for flexible design.

inside the design /



coordinating tile + broadloom

Available in carpet tiles and a coordinating broadloom style, the collection is designed to promote flexibility and ease of use throughout a range of spaces.



easy to coordinate

The multiple colorways allow for easy coordination and flexible design.



branding + zoning

The range in colors is ideal for branding, wayfinding and zoning, enhancing the student experience through energetic design.



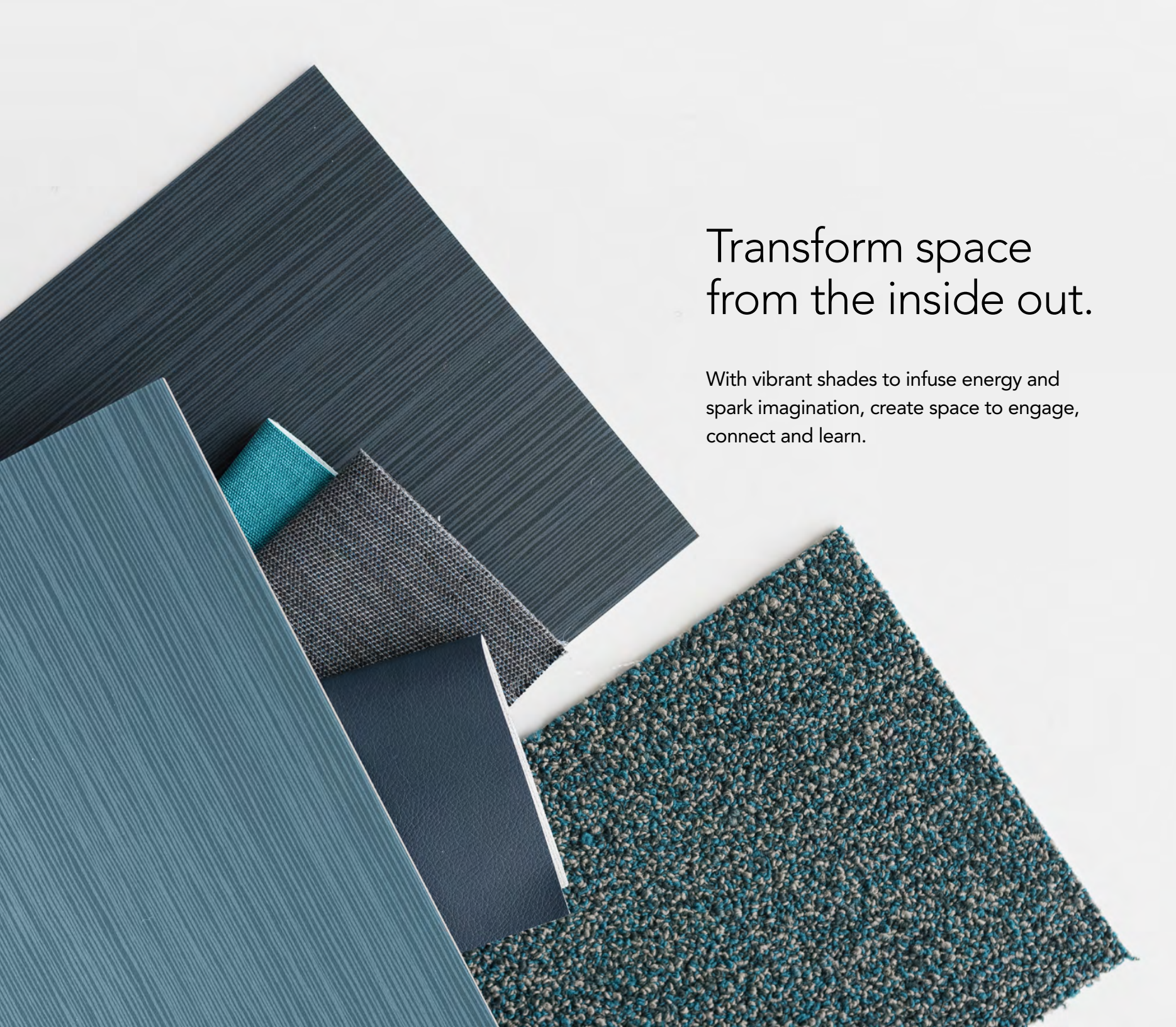
fully recyclable / In The Loop

Color Your World carpet tiles are In The Loop and can be reclaimed and recycled at the end of their useful life through Patcraft's re[TURN][®] reclamation program.



durable + sustainable materials

All products offer ease of cleaning and maintenance, providing a durable, high-performing solution throughout a range of learning environments.



Transform space from the inside out.

With vibrant shades to infuse energy and spark imagination, create space to engage, connect and learn.

spaces to explore
+ engage /

For active and playful spaces
that motivate, inspire and
challenge. Designed for
curious minds.

k-12



COLOR YOUR WORLD in ube, merlot and tangerine
featured with **LEARNING LAB** in concept
installed monolithic

COLOR YOUR WORLD in
cobalt, parakeet and ube
featured with **LEARNING LAB**
in concept / installed monolithic





COLOR YOUR WORLD Broadloom
in twilight (on stairs)

featured with
EXPERIENCE in solution /
installed quarter turn

spaces to focus /

For mindful moments
to review, reflect or
recharge, create space
for calming breaks
throughout a busy day.

workplace
higher education
k-12



COLOR YOUR WORLD in antler, color crayons, mauve
and color purple / installed brick



COLOR YOUR WORLD in steel, daffodil, parakeet
and color screen / installed monolithic



COLOR YOUR WORLD in moss
and antler / installed monolithic



spaces to connect
+ collaborate /

For innovative ideas and
dynamic discourse, design
to support learning, inspire
creativity and enliven the
student experience.

higher education
k-12



COLOR YOUR WORLD in mauve
and antler / installed brick

COLOR YOUR WORLD in denim, ocean
and color screen / installed monolithic

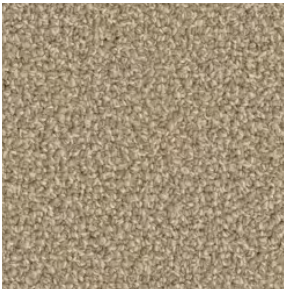




COLOR YOUR WORLD

in camel and jute /
installed monolithic

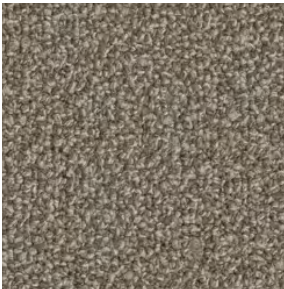
COLORWAYS / I0110 (24 x 24) + I0131 (BROADLOOM)



jute 103



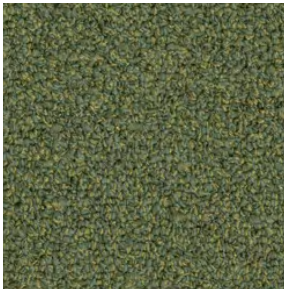
camel 110



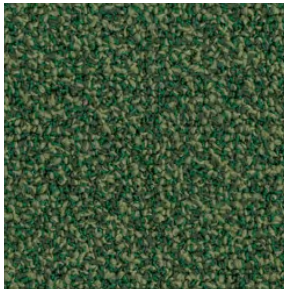
antler 150



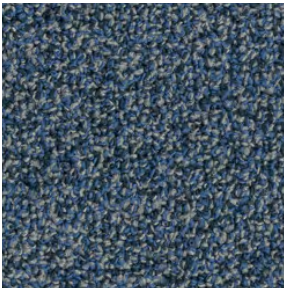
daffodil 220



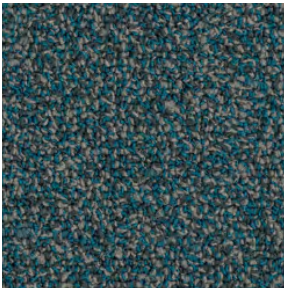
moss 330



parakeet 360



denim 410



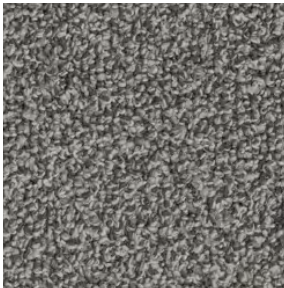
ocean 435



steel 570



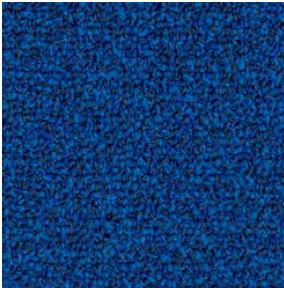
harbor 583



color screen 515



color hues 532



cobalt 450



twilight 490



coffee 500



color cartridge 521



color crayons 505



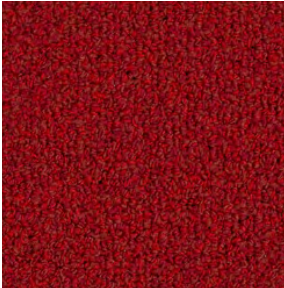
color chips 522



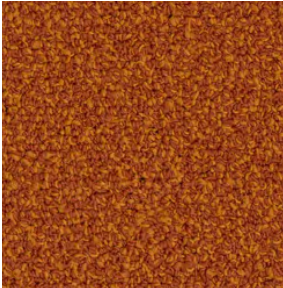
ube 980



merlot 890



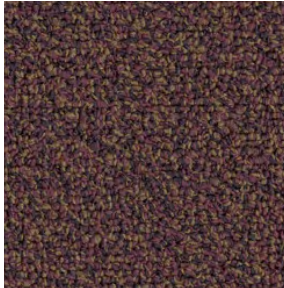
poppy 870



tangerine 640



mauve 810



color purple 926

COORDINATING PALETTE / WORKPLACE



- 1 COLOR YOUR WORLD 10110
in color cartridge
- 2 COLOR YOUR WORLD 10110
in coffee
- 3 ADMIX I508V in dove shell
- 4 WITHDRAW I418V in desert tan
- 5 TRUE SPECIES I738V in mocha oak
- 6 STEP INSIDE I0660 in frozen earth
- 7 ETCHED I0512 in industrial craft
- 8 RUBBER BASE in torched 00094
- 9 BENJAMIN MOORE PAINT
in Wish AF-680
- 10 BENJAMIN MOORE PAINT
in Bittersweet Chocolate 2114-10

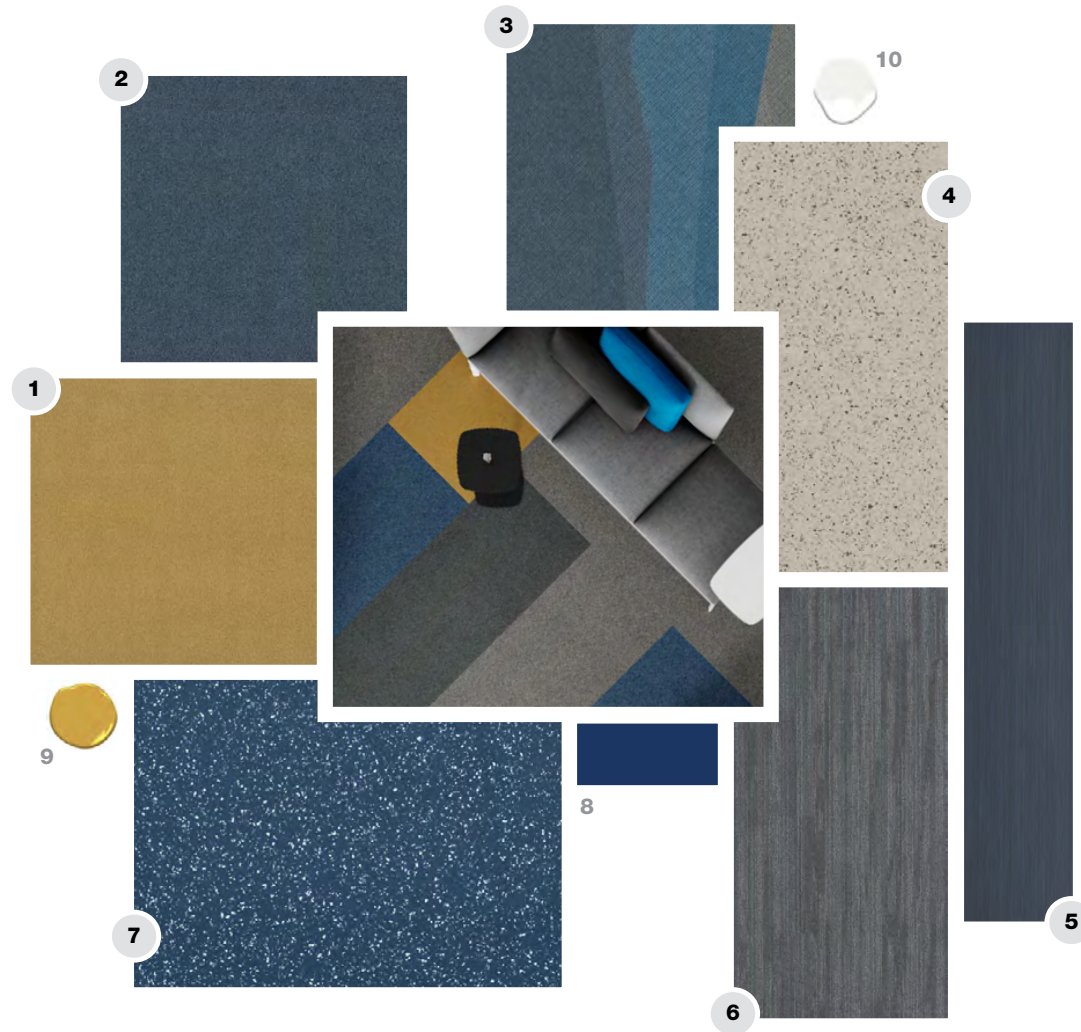
designed by

MORGAN ROSENBAUM

Interior Design Service Specialist

[CUSTOMIZE & ORDER PREMIX >](#)

COORDINATING PALETTE / K-12 EDUCATION



- 1 COLOR YOUR WORLD I0110 in daffodil
- 2 COLOR YOUR WORLD I0110 in denim
- 3 PLANAR I716V in blue planar
- 4 ADMIX I508V in dove shell
- 5 POLYCHROME I746V in indigo
- 6 LINEAR TENSION I0541 in cobblestone
- 7 NUMIX I768V in nautical solid
- 8 RUBBER BASE in cobalt 00008
- 9 BENJAMIN MOORE PAINT in Golden Bounty 294
- 10 BENJAMIN MOORE PAINT in Super White OC-152

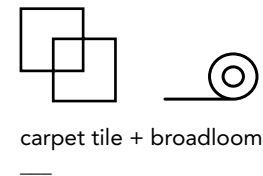
designed by

MORGAN ROSENBAUM

Interior Design Service Specialist

[CUSTOMIZE & ORDER PREMIX >](#)

PRODUCT SPECS /



carpet tile + broadloom

PRODUCT SPECIFICATIONS

COLOR YOUR WORLD 24 X 24

style / I0110

product size	24" x 24" 60.96 cm x 60.96 cm
gauge	1/10 39.37 per 10cm
tufted yarn weight	22 oz./yd ² 745.93 g/m ²
stitches	10 per inch 38.06 per 10 cm
fiber type	EcoSolution Q100™ Nylon
backing type	EcoWorx® Tile

COLOR YOUR WORLD BROADLOOM

style / I0131

product size	12' 3.66 m
gauge	1/10 39.37 per 10cm
tufted yarn weight	28 oz./yd ² 949.36 g/m ²
stitches	9 per inch 35.43 per 10 cm
fiber type	EcoSolution Q100™ Nylon
backing type	Ultraloc®

*** EcoWorx carpet tile styles are carbon neutral and in the loop*

INSTALLATION METHODS | 24 X 24

1/4 TURN



MONOLITHIC



BRICK



ASHLAR



COLOR YOUR WORLD Broadloom
in color crayons

For full specifications and color, please [visit this collection on patcraft.com](https://www.patcraft.com).