

# M | Influence PRODUCT SPECIFICATIONS



<b>COLLECTION</b>	Inspired Connection
<b>STYLE NUMBER</b>	10563
<b>PRODUCT TYPE</b>	Plank
<b>CONSTRUCTION</b>	Multi-Level Pattern Cut/Loop
<b>FIBER TYPE</b>	EcoSolution Q100® Nylon
<b>DYE METHOD</b>	100% Solution Dyed
<b>PRIMARY BACKING</b>	Non-Woven Synthetic
<b>SECONDARY BACKING</b>	EcoWorx® Tile
<b>GSA APPROVED PRODUCT</b>	Yes

<b>PRODUCT SIZE</b>
<b>AREA PER BOX</b>
<b>PIECES PER BOX</b>
<b>GAUGE</b>
<b>STITCHES</b>
<b>FINISHED PILE THICKNESS</b>
<b>AVERAGE DENSITY</b>
<b>KILOTEX</b>
<b>TOTAL THICKNESS</b>
<b>TUFTED YARN WEIGHT</b>

<b>US Units</b>
18 inches x 36 inches
45 ft <sup>2</sup>
10
1/10 inches
8.17 per inches
0.171 inches
5895 oz/yd <sup>3</sup>
0.325 inches
28 oz/yd <sup>2</sup>

<b>Metric Units</b>
45.72 cm x 91.44 cm
4.18 m <sup>2</sup>
39.37 per 10 cm
32.15 per 10 cm
4.34 mm
0.22 g/cm <sup>3</sup>
7.52
8.26 mm
949.36 g/m <sup>2</sup>

## Performance Testing

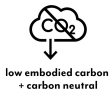
<b>PILL TEST</b>	Pass
<b>RADIANT PANEL</b>	Class I
<b>NBS SMOKE</b>	Less than 450
<b>ELECTROSTATIC PROPENSITY</b>	Less than 3.5 kv
<b>CRI GREENLABEL PLUS</b>	GLP9968
<b>ADA COMPLIANCE</b>	>0.6, meets the recommended static coefficient of friction for ADA walking surfaces and accessible routes

Test Reports may be included or listed by the manufacturing/inventory style number as opposed to the noted selling style number.

## Warranty

Lifetime Commercial Limited

Please visit [patcraft.com](https://www.patcraft.com) for the most current warranty information.



# M | Influence

## Installation Methods



Basketweave



Herringbone



Boxed In



Brick



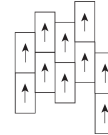
Half Basketweave



Monolithic



Ashlar



Stagger

[Installation Guidelines](#)

[Maintenance Guidelines](#)

## Environmental Specifications

<b>RECYCLABILITY</b>	100% recyclable
<b>EMBODIED CARBON (CRADLE TO GATE)</b>	3.91 Kg CO <sub>2</sub> /M <sup>2</sup>
<b>LIFE-CYCLE CARBON EMISSIONS</b>	Carbon Neutral

This product is carbon neutral through the purchase of verified offsets, and is manufactured in a carbon neutral facility.

## Materials

### Ingredients

**DOES NOT CONTAIN** does not contain PVC, phthalates or PBD/PBDE

### Recycled Content

<b>TOTAL RECYCLED CONTENT (BY WEIGHT)</b>	61%
<b>PRE-CONSUMER</b>	61%
<b>POST-CONSUMER</b>	0%
<b>COUNTRY OF ORIGIN (MANUFACTURER)</b>	USA

Meets or exceeds all local and national regulations in country of manufacture. Manufactured in an ISO9001 & ISO14001 certified facility or equivalent. Recycled content is calculated using system allocation, mass balance, and direct insertion. The actual recycled content in this product will likely vary. For more information email [info@patcraft.com](mailto:info@patcraft.com).

## Third Party Certifications

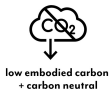
<b>CRADLE TO CRADLE CERTIFIED®</b>	Silver Level (Version 4.0)
<b>HEALTH PRODUCT DECLARATION (HPD)</b>	1,000 ppm Disclosure
<b>ENVIRONMENTAL PRODUCT DECLARATION (EPD)</b>	3rd Party Certified in Accordance with ISO14044, ISO14025 & EN15804
<b>DECLARE</b>	LBC Compliant
<b>NSF 140</b>	Gold
<b>CRI GREEN LABEL PLUS (GLP)</b>	GLP9968
<b>ENVIRONMENTAL GUARANTEE</b>	The products in this collection are In The Loop – they are fully recyclable through our re[TURN]® Reclamation Program. We will facilitate the pick-up and free return of a minimum of 100 SY of EcoWorx®, 500 SY of ReWorx™ products or 5,000 SF of Shaw-manufactured resilient products to be recycled. Participating in re[TURN]® lowers carbon emissions of these products by reducing virgin materials needed for making new products.

<b>PRODUCT PACKAGING</b>	100% Recyclable
<b>USGBC LEED</b>	contributes
<b>BUILDING RESEARCH ESTABLISHMENT</b>	certified

**GOOD ENVIRONMENTAL CHOICE AUSTRALIA**  
**PATCRAFT.COM / @PATCRAFTFLOORS / 800.241.4014**

© 2025 Shaw Industries Group, Inc., a Berkshire Hathaway Company

**TRANSFORMSPACE**



# M | Influence

## Available Colorways



NOTEWORTHY 00110



THOUGHTFUL 00125



ORGANIC 00145



MOTIVATE 00310



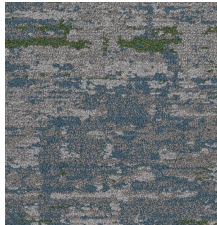
CONTEMPLATE 00330



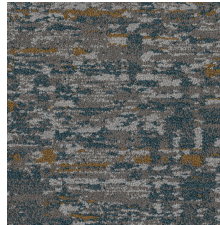
SENTIMENT 00400



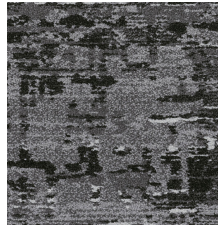
ASPIRE 00450



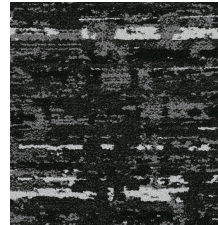
PURPOSE 00500



KINDRED 00530



AFFINITY 00550



FORTIFY 00590



TRANSFORM 00705



Specifications are subject to nominal manufacturing variances. Material supply and/or manufacturing processes may necessitate specification changes without notice. This carpet is an exclusive design and may not be duplicated in any manner. Use of this design in the creation of another carpet design is also strictly prohibited. Visit [patcraft.com/testing](https://patcraft.com/testing) for more information.