

M | Inverness

PRODUCT SPECIFICATIONS



COLLECTION	Isle of Skye
STYLE NUMBER	10457
PRODUCT TYPE	Plank
CONSTRUCTION	Multi-Level Pattern Loop
FIBER TYPE	Solution Q Extreme® Nylon
DYE METHOD	100% Solution Dyed
PRIMARY BACKING	Non-Woven Synthetic
SECONDARY BACKING	EcoWorx® Tile
GSA APPROVED PRODUCT	Yes

PRODUCT SIZE
AREA PER BOX
PIECES PER BOX
GAUGE
STITCHES
FINISHED PILE THICKNESS
AVERAGE DENSITY
KILOTEX
TOTAL THICKNESS
TUFTED YARN WEIGHT

US Units
12 inches x 48 inches
48 ft ²
12
1/12 inches
10.67 per inches
0.09 inches
8000 oz/yd ³
0.238 inches
20 oz/yd ²

Metric Units
30.48 cm x 121.92 cm
4.46 m ²
47.24 per 10 cm
41.99 per 10 cm
2.29 mm
0.30 g/cm ³
12.21
6.05 mm
678.12 g/m ²

Performance Testing

PILL TEST	Pass
RADIANT PANEL	Class I
NBS SMOKE	Less than 450
ELECTROSTATIC PROPENSITY	Less than 3.5 kv
CRI GREENLABEL PLUS	GLP9968
ADA COMPLIANCE	>0.6, meets the recommended static coefficient of friction for ADA walking surfaces and accessible routes

Test Reports may be included or listed by the manufacturing/inventory style number as opposed to the noted selling style number.

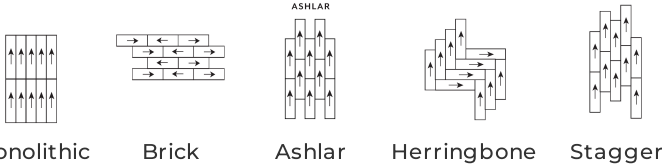
Warranty

Lifetime Commercial Limited

Please visit [patcraft.com](https://www.patcraft.com) for the most current warranty information.

M | Inverness

Installation Methods



[Installation Guidelines](#)
[Maintenance Guidelines](#)

Environmental Specifications

RECYCLABILITY 100% recyclable

Materials

Ingredients

DOES NOT CONTAIN does not contain PVC, phthalates or PBD/PBDE

Recycled Content

TOTAL RECYCLED CONTENT (BY WEIGHT) 35%
PRE-CONSUMER 35%
POST-CONSUMER 0%
COUNTRY OF ORIGIN (MANUFACTURER) USA

Meets or exceeds all local and national regulations in country of manufacture. Manufactured in an ISO9001 & ISO14001 certified facility or equivalent. Recycled content is calculated using system allocation, mass balance, and direct insertion. The actual recycled content in this product will likely vary. For more information email info@patcraft.com.

Third Party Certifications

CRADLE TO CRADLE CERTIFIED®	Silver Level (Version 3.1)
HEALTH PRODUCT DECLARATION (HPD)	1,000 ppm Disclosure
ENVIRONMENTAL PRODUCT DECLARATION (EPD)	3rd Party Certified in Accordance with ISO14044, ISO14025 & EN15804
DECLARE	LBC Compliant
NSF 140	Gold
CRI GREEN LABEL PLUS (GLP)	GLP9968
ENVIRONMENTAL GUARANTEE	The products in this collection are In The Loop – they are fully recyclable through our re[TURN]® Reclamation Program. We will facilitate the pick-up and free return of a minimum of 100 SY of EcoWorx®, 500 SY of ReWorx™ products or 5,000 SF of Shaw-manufactured resilient products to be recycled. Participating in re[TURN]® lowers carbon emissions of these products by reducing virgin materials needed for making new products.
PRODUCT PACKAGING	100% Recyclable
USGBC LEED	contributes

M | Inverness

Available Colorways



STEIN 00100



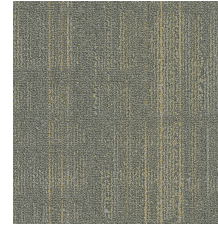
PORTREE 00120



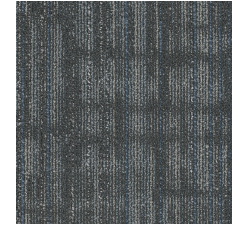
STORNOWAY 00190



HIGHLANDS 00200



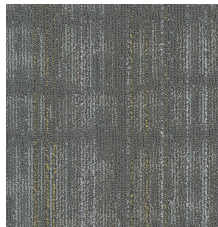
STAFFIN 00300



WATERNISH 00400



ARMADALE 00500



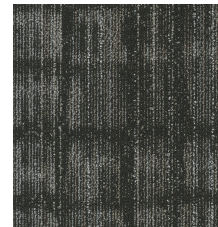
GLENDALE 00510



GEARY 00525



BROADFORD 00550



CARBOST 00590



ELGOL 00700



Specifications are subject to nominal manufacturing variances. Material supply and/or manufacturing processes may necessitate specification changes without notice. This carpet is an exclusive design and may not be duplicated in any manner. Use of this design in the creation of another carpet design is also strictly prohibited. Visit patcraft.com/testing for more information.