

M | Logic PRODUCT SPECIFICATIONS



COLLECTION	Rational
STYLE NUMBER	10460
PRODUCT TYPE	Tile
CONSTRUCTION	Multi-Level Pattern Loop
FIBER TYPE	EcoSolution Q® Nylon
DYE METHOD	100% Solution Dyed
PRIMARY BACKING	Non-Woven Synthetic
SECONDARY BACKING	StrataWorx® Tile
PROTECTIVE TREATMENTS	SSP® Shaw Soil Protection
GSA APPROVED PRODUCT	Yes

	US Units	Metric Units
PRODUCT SIZE	24 inches x 24 inches	60.96 cm x 60.96 cm
AREA PER BOX	80 ft ²	7.43 m ²
PIECES PER BOX	20	
GAUGE	1/10 inches	39.37 per 10 cm
STITCHES	8.83 per inches	34.78 per 10 cm
FINISHED PILE THICKNESS	0.099 inches	2.51 mm
AVERAGE DENSITY	4727 oz/yd ³	0.17 g/cm ³
KILOTEX		7.46
TOTAL THICKNESS	0.25 inches	6.35 mm
TUFTED YARN WEIGHT	13 oz/yd ²	440.77 g/m ²

Performance Testing

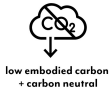
PILL TEST	Pass
RADIANT PANEL	Class I
NBS SMOKE	Less than 450
ELECTROSTATIC PROPENSITY	Less than 3.5 kv
CRI GREENLABEL PLUS	GLP2671
ADA COMPLIANCE	>0.6, meets the recommended static coefficient of friction for ADA walking surfaces and accessible routes

Test Reports may be included or listed by the manufacturing/inventory style number as opposed to the noted selling style number.

Warranty

15 Year Commercial Limited Warranty

Please visit patcraft.com for the most current warranty information.



M | Logic

Installation Methods



Quarter Turn Random Monolithic Brick Ashlar

[Installation Guidelines](#)

[Maintenance Guidelines](#)

EMBODIED CARBON (CRADLE TO GATE)

6.65 Kg CO₂/M²

LIFE-CYCLE CARBON EMISSIONS

Carbon Neutral

Materials

COUNTRY OF ORIGIN (MANUFACTURER) USA

Meets or exceeds all local and national regulations in country of manufacture. Manufactured in an ISO9001 & ISO14001 certified facility or equivalent. Recycled content is calculated using system allocation, mass balance, and direct insertion. The actual recycled content in this product will likely vary. For more information email info@patcraft.com.

Third Party Certifications

CRADLE TO CRADLE CERTIFIED®

[Silver Level \(Version 3.1\)](#)

HEALTH PRODUCT DECLARATION (HPD)

[1,000 ppm Disclosure](#)

ENVIRONMENTAL PRODUCT DECLARATION (EPD)

[3rd Party Certified in Accordance with ISO14044, ISO14025 & EN15804](#)

NSF 140

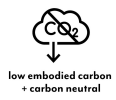
[Gold](#)

CRI GREEN LABEL PLUS (GLP)

[GLP9968](#)

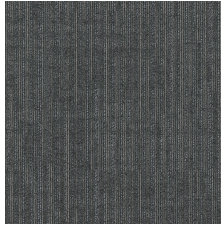


Specifications are subject to nominal manufacturing variances. Material supply and/or manufacturing processes may necessitate specification changes without notice. This carpet is an exclusive design and may not be duplicated in any manner. Use of this design in the creation of another carpet design is also strictly prohibited. Visit patcraft.com/testing for more information.

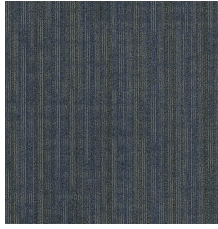


M | Logic

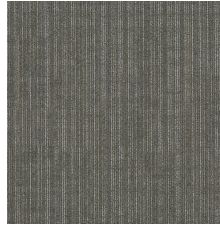
Available Colorways



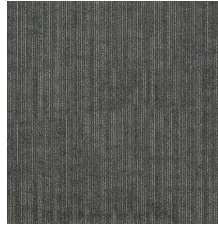
TECHNIQUE 00400



BLUEPRINT 00450



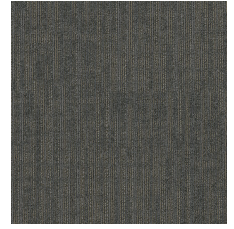
METHOD 00500



INTELLECT 00550



PHILOSOPHY 00700



INTENT 00750