

# M | Modern Serge

## PRODUCT SPECIFICATIONS



<b>COLLECTION</b>	Deconstructed Felt
<b>STYLE NUMBER</b>	10538
<b>PRODUCT TYPE</b>	Plank
<b>CONSTRUCTION</b>	Multi-Level Pattern Loop
<b>FIBER TYPE</b>	Solution Q Extreme® Nylon
<b>DYE METHOD</b>	100% Solution Dyed
<b>PRIMARY BACKING</b>	Non-Woven Synthetic
<b>SECONDARY BACKING</b>	EcoWorx® Tile
<b>GSA APPROVED PRODUCT</b>	Yes

<b>PRODUCT SIZE</b>
<b>AREA PER BOX</b>
<b>PIECES PER BOX</b>
<b>GAUGE</b>
<b>STITCHES</b>
<b>FINISHED PILE THICKNESS</b>
<b>AVERAGE DENSITY</b>
<b>KILOTEX</b>
<b>TOTAL THICKNESS</b>
<b>TUFTED YARN WEIGHT</b>

<b>US Units</b>
12 inches x 48 inches
48 ft <sup>2</sup>
12
1/12 inches
11.17 per inches
0.057 inches
10105 oz/yd <sup>3</sup>
0.235 inches
16 oz/yd <sup>2</sup>

<b>Metric Units</b>
30.48 cm x 121.92 cm
4.46 m <sup>2</sup>
47.24 per 10 cm
43.96 per 10 cm
1.45 mm
0.37 g/cm <sup>3</sup>
12.01
5.97 mm
542.49 g/m <sup>2</sup>

## Performance Testing

<b>PILL TEST</b>	Pass
<b>RADIANT PANEL</b>	Class I
<b>NBS SMOKE</b>	Less than 450
<b>ELECTROSTATIC PROPENSITY</b>	Less than 3.5 kv
<b>CRI GREENLABEL PLUS</b>	GLP9968
<b>ADA COMPLIANCE</b>	>0.6, meets the recommended static coefficient of friction for ADA walking surfaces and accessible routes

Test Reports may be included or listed by the manufacturing/inventory style number as opposed to the noted selling style number.

## Warranty

Lifetime Commercial Limited

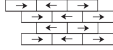
Please visit [patcraft.com](https://patcraft.com) for the most current warranty information.

# M | Modern Serge

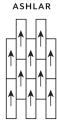
## Installation Methods



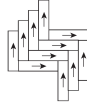
Monolithic



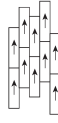
Brick



Ashlar



Herringbone



Stagger

[Installation Guidelines](#)

[Maintenance Guidelines](#)

## Environmental Specifications

### RECYCLABILITY

100% recyclable

## Materials

### Ingredients

#### DOES NOT CONTAIN

does not contain PVC, phthalates or PBD/PBDE

### Recycled Content

#### TOTAL RECYCLED CONTENT (BY WEIGHT)

37%

#### PRE-CONSUMER

37%

#### POST-CONSUMER

0%

#### COUNTRY OF ORIGIN (MANUFACTURER)

USA

Meets or exceeds all local and national regulations in country of manufacture. Manufactured in an ISO9001 & ISO14001 certified facility or equivalent. Recycled content is calculated using system allocation, mass balance, and direct insertion. The actual recycled content in this product will likely vary. For more information email [info@patcraft.com](mailto:info@patcraft.com).

## Third Party Certifications

### CRADLE TO CRADLE CERTIFIED®

Silver Level (Version 3.1)

### HEALTH PRODUCT DECLARATION (HPD)

1,000 ppm Disclosure

### ENVIRONMENTAL PRODUCT DECLARATION (EPD)

3rd Party Certified in Accordance with ISO14044, ISO14025 & EN15804

### DECLARE

LBC Compliant

### NSF 140

Gold

### CRI GREEN LABEL PLUS (GLP)

GLP9968

### ENVIRONMENTAL GUARANTEE

The products in this collection are In The Loop – they are fully recyclable through our re[TURN]® Reclamation Program. We will facilitate the pick-up and free return of a minimum of 100 SY of EcoWorx®, 500 SY of ReWorx™ products or 5,000 SF of Shaw-manufactured resilient products to be recycled. Participating in re[TURN]® lowers carbon emissions of these products by reducing virgin materials needed for making new products.

### PRODUCT PACKAGING

100% Recyclable

### USGBC LEED

contributes

### BUILDING RESEARCH ESTABLISHMENT

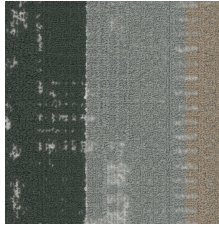
certified

### GOOD ENVIRONMENTAL CHOICE AUSTRALIA

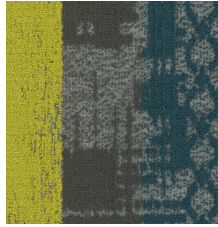
certified

# M | Modern Serge

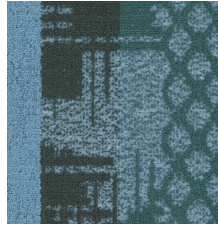
## Available Colorways



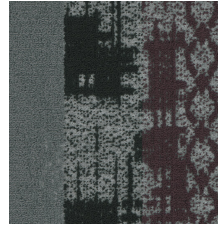
NEUTRAL 00150



MID-TONE 00530



JEWEL 00850



ANALOGOUS 00920



Specifications are subject to nominal manufacturing variances. Material supply and/or manufacturing processes may necessitate specification changes without notice. This carpet is an exclusive design and may not be duplicated in any manner. Use of this design in the creation of another carpet design is also strictly prohibited. Visit [patcraft.com/testing](https://patcraft.com/testing) for more information.