

M | Nocturne 9" x 36" PRODUCT SPECIFICATIONS



COLLECTION	Material Paradox
STYLE NUMBER	10470
PRODUCT TYPE	Plank
CONSTRUCTION	Multi-Level Pattern Cut/Loop
FIBER TYPE	EcoSolution Q100® Nylon
DYE METHOD	100% Solution Dyed
PRIMARY BACKING	Non-Woven Synthetic
SECONDARY BACKING	EcoWorx® Tile
PROTECTIVE TREATMENTS	SSP® Shaw Soil Protection
GSA APPROVED PRODUCT	Yes

	US Units	Metric Units
PRODUCT SIZE	9 inches x 36 inches	22.86 cm x 91.44 cm
AREA PER BOX	45 ft ²	4.18 m ²
PIECES PER BOX	20	
GAUGE	1/12 inches	47.24 per 10 cm
STITCHES	10.33 per inches	40.68 per 10 cm
FINISHED PILE THICKNESS	0.173 inches	4.39 mm
AVERAGE DENSITY	5827 oz/yd ³	0.22 g/cm ³
KILOTEX		13.41
TOTAL THICKNESS	0.321 inches	8.15 mm
TUFTED YARN WEIGHT	28 oz/yd ²	949.36 g/m ²

Performance Testing

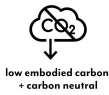
PILL TEST	Pass
RADIANT PANEL	Class I
NBS SMOKE	Less than 450
ELECTROSTATIC PROPENSITY	Less than 3.5 kv
CRI GREENLABEL PLUS	GLP9968
ADA COMPLIANCE	>0.6, meets the recommended static coefficient of friction for ADA walking surfaces and accessible routes

Test Reports may be included or listed by the manufacturing/inventory style number as opposed to the noted selling style number.

Warranty

Lifetime Commercial Limited

Please visit patcraft.com for the most current warranty information.



M | Nocturne 9" x 36"

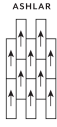
Installation Methods



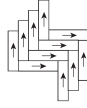
Monolithic



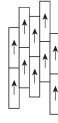
Brick



Ashlar



Herringbone



Stagger

[Installation Guidelines](#)

[Maintenance Guidelines](#)

Environmental Specifications

RECYCLABILITY	100% recyclable
EMBODIED CARBON (CRADLE TO GATE)	3.91 Kg CO ₂ /M ²
LIFE-CYCLE CARBON EMISSIONS	Carbon Neutral

This product is carbon neutral through the purchase of verified offsets, and is manufactured in a carbon neutral facility.

Materials

Ingredients

DOES NOT CONTAIN does not contain PVC, phthalates or PBD/PBDE

Recycled Content

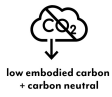
TOTAL RECYCLED CONTENT (BY WEIGHT)	61%
PRE-CONSUMER	61%
POST-CONSUMER	0%
COUNTRY OF ORIGIN (MANUFACTURER)	USA

Meets or exceeds all local and national regulations in country of manufacture. Manufactured in an ISO9001 & ISO14001 certified facility or equivalent. Recycled content is calculated using system allocation, mass balance, and direct insertion. The actual recycled content in this product will likely vary. For more information email info@patcraft.com.

Third Party Certifications

CRADLE TO CRADLE CERTIFIED®	Silver Level (Version 4.0)
HEALTH PRODUCT DECLARATION (HPD)	1,000 ppm Disclosure
ENVIRONMENTAL PRODUCT DECLARATION (EPD)	3rd Party Certified in Accordance with ISO14044, ISO14025 & EN15804
DECLARE	LBC Compliant
NSF 140	Gold
CRI GREEN LABEL PLUS (GLP)	GLP9968
ENVIRONMENTAL GUARANTEE	The products in this collection are In The Loop – they are fully recyclable through our re[TURN]® Reclamation Program. We will facilitate the pick-up and free return of a minimum of 100 SY of EcoWorx®, 500 SY of ReWorx™ products or 5,000 SF of Shaw-manufactured resilient products to be recycled. Participating in re[TURN]® lowers carbon emissions of these products by reducing virgin materials needed for making new products.

PRODUCT PACKAGING	100% Recyclable
USGBC LEED	contributes
BUILDING RESEARCH ESTABLISHMENT	certified
GOOD ENVIRONMENTAL CHOICE AUSTRALIA	certified
PATCRAFT.COM / @PATCRAFTFLOORS / 800.241.4014	



M | Nocturne 9" x 36"

Available Colorways



INCANDESCENT 00100



HINT 00150



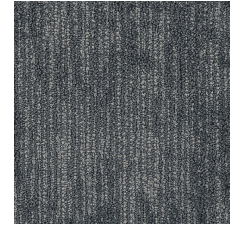
AMBIENT 00290



SPECTRUM 00490



LUMEN 00500



REFLECT 00530



UPLIGHT 00550



LUX 00590



CHROMA 00700



REFRACT 00790



Specifications are subject to nominal manufacturing variances. Material supply and/or manufacturing processes may necessitate specification changes without notice. This carpet is an exclusive design and may not be duplicated in any manner. Use of this design in the creation of another carpet design is also strictly prohibited. Visit patcraft.com/testing for more information.