

M | Restorative

PRODUCT SPECIFICATIONS



COLLECTION	Colour & Texture Fusion
STYLE NUMBER	10626
PRODUCT TYPE	Tile
CONSTRUCTION	Multi-Level Pattern Loop
FIBER TYPE	EcoSolution Q100® Nylon
DYE METHOD	100% Solution Dyed
PRIMARY BACKING	Non-Woven Synthetic
SECONDARY BACKING	EcoWorx® Tile

	US Units	Metric Units
PRODUCT SIZE	24 inches x 24 inches	60.96 cm x 60.96 cm
AREA PER BOX	48 ft ²	4.46 m ²
PIECES PER BOX	12	
GAUGE	1/10 inches	39.37 per 10 cm
STITCHES	9.83 per inches	38.71 per 10 cm
FINISHED PILE THICKNESS	0.08 inches	2.03 mm
AVERAGE DENSITY	7200 oz/yd ³	0.27 g/cm ³
KILOTEX		9.04
TOTAL THICKNESS	0.219 inches	5.56 mm
TUFTED YARN WEIGHT	16 oz/yd ²	542.49 g/m ²

Performance Testing

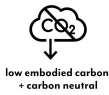
PILL TEST	Pass
RADIANT PANEL	Class I
NBS SMOKE	Less than 450
ELECTROSTATIC PROPENSITY	Less than 3.5 kv
CRI GREENLABEL PLUS	GLP9968
ADA COMPLIANCE	>0.6, meets the recommended static coefficient of friction for ADA walking surfaces and accessible routes

Test Reports may be included or listed by the manufacturing/inventory style number as opposed to the noted selling style number.

Warranty

Lifetime Commercial Limited

Please visit patcraft.com for the most current warranty information.



M | Restorative

Installation Methods



Quarter Turn



Random



Monolithic



Brick



Ashlar

[Installation Guidelines](#)

[Maintenance Guidelines](#)

EMBODIED CARBON (CRADLE TO GATE)

3.67 Kg CO₂/M²

LIFE-CYCLE CARBON EMISSIONS

Carbon Neutral

Materials

Recycled Content

TOTAL RECYCLED CONTENT (BY WEIGHT)

56%

PRE-CONSUMER

56%

POST-CONSUMER

0%

COUNTRY OF ORIGIN (MANUFACTURER)

USA

Meets or exceeds all local and national regulations in country of manufacture. Manufactured in an ISO9001 & ISO14001 certified facility or equivalent. Recycled content is calculated using system allocation, mass balance, and direct insertion. The actual recycled content in this product will likely vary. For more information email info@patcraft.com.

Third Party Certifications

CRADLE TO CRADLE CERTIFIED®

[Silver Level \(Version 4.0\)](#)

HEALTH PRODUCT DECLARATION (HPD)

[1,000 ppm Disclosure](#)

ENVIRONMENTAL PRODUCT DECLARATION (EPD)

[3rd Party Certified in Accordance with ISO14044, ISO14025 & EN15804](#)

DECLARE

[LBC Compliant](#)

NSF 140

[Gold](#)

CRI GREEN LABEL PLUS (GLP)

[GLP9968](#)

ENVIRONMENTAL GUARANTEE

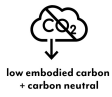
The products in this collection are In The Loop – they are fully recyclable through our re[TURN]® Reclamation Program. We will facilitate the pick-up and free return of a minimum of 100 SY of EcoWorx®, 500 SY of ReWorx™ products or 5,000 SF of Shaw-manufactured resilient products to be recycled. Participating in re[TURN]® lowers carbon emissions of these products by reducing virgin materials needed for making new products.

PRODUCT PACKAGING

100% Recyclable

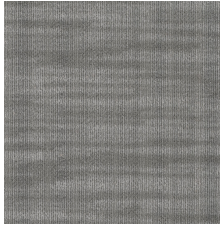


Specifications are subject to nominal manufacturing variances. Material supply and/or manufacturing processes may necessitate specification changes without notice. This carpet is an exclusive design and may not be duplicated in any manner. Use of this design in the creation of another carpet design is also strictly prohibited. Visit patcraft.com/testing for more information.

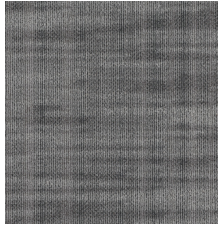


M | Restorative

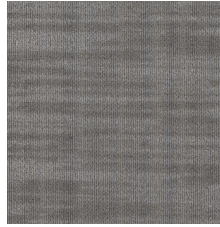
Available Colorways



MIST 00100



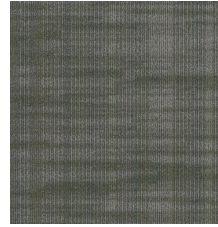
GLAZE 00120



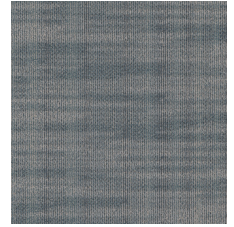
FOG 00130



CLAY 00150



SAGE 00300



SKY 00400



RIVER 00450



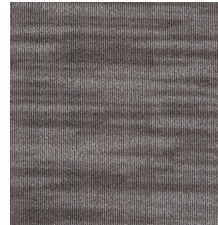
ASH 00500



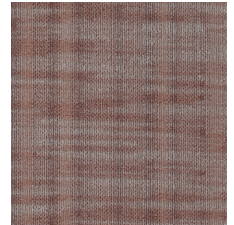
SMOKE 00550



COPPER 00700



EARTH 00750



BLUSH 00800