

M | Static Noise

PRODUCT SPECIFICATIONS



COLLECTION	Textural Perception
STYLE NUMBER	10632
PRODUCT TYPE	Plank
CONSTRUCTION	Multi-Level Pattern Loop
FIBER TYPE	EcoSolution Q100® Nylon
DYE METHOD	100% Solution Dyed
PRIMARY BACKING	Non-Woven Synthetic
SECONDARY BACKING	EcoWorx® Tile

PRODUCT SIZE	US Units	Metric Units
AREA PER BOX	9 inches x 36 inches	22.86 cm x 91.44 cm
PIECES PER BOX	45 ft ²	4.18 m ²
GAUGE	20	
STITCHES	1/12 inches	47.24 per 10 cm
FINISHED PILE THICKNESS	9.83 per inches	38.71 per 10 cm
AVERAGE DENSITY	0.08 inches	2.03 mm
KILOTEX	7650 oz/yd ³	0.28 g/cm ³
TOTAL THICKNESS		11.54
TUFTED YARN WEIGHT	0.243 inches	6.17 mm
	17 oz/yd ²	576.40 g/m ²

Performance Testing

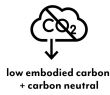
PILL TEST	Pass
RADIANT PANEL	Class I
NBS SMOKE	Less than 450
CRI GREENLABEL PLUS	GLP9968
ADA COMPLIANCE	>0.6, meets the recommended static coefficient of friction for ADA walking surfaces and accessible routes

Test Reports may be included or listed by the manufacturing/inventory style number as opposed to the noted selling style number.

Warranty

Lifetime Commercial Limited

Please visit patcraft.com for the most current warranty information.

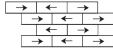


M | Static Noise

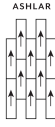
Installation Methods



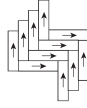
Monolithic



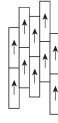
Brick



Ashlar



Herringbone



Stagger

[Installation Guidelines](#)

[Maintenance Guidelines](#)

Environmental Specifications

EMBODIED CARBON (CRADLE TO GATE)

3.69 Kg CO₂/M²

LIFE-CYCLE CARBON EMISSIONS

Carbon Neutral

This product is carbon neutral through the purchase of verified offsets, and is manufactured in a carbon neutral facility.

Materials

Recycled Content

TOTAL RECYCLED CONTENT (BY WEIGHT)

56%

PRE-CONSUMER

56%

POST-CONSUMER

0%

COUNTRY OF ORIGIN (MANUFACTURER)

USA

Meets or exceeds all local and national regulations in country of manufacture. Manufactured in an ISO9001 & ISO14001 certified facility or equivalent. Recycled content is calculated using system allocation, mass balance, and direct insertion. The actual recycled content in this product will likely vary. For more information email info@patcraft.com.

Third Party Certifications

CRADLE TO CRADLE CERTIFIED®

Silver Level (Version 4.0)

HEALTH PRODUCT DECLARATION (HPD)

1,000 ppm Disclosure

ENVIRONMENTAL PRODUCT DECLARATION (EPD)

3rd Party Certified in Accordance with ISO14044, ISO14025 & EN15804

DECLARE

LBC Compliant

NSF 140

Gold

CRI GREEN LABEL PLUS (GLP)

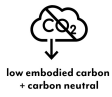
GLP9968

ENVIRONMENTAL GUARANTEE

The products in this collection are In The Loop – they are fully recyclable through our re[TURN]® Reclamation Program. We will facilitate the pick-up and free return of a minimum of 100 SY of EcoWorx®, 500 SY of ReWorx™ products or 5,000 SF of Shaw-manufactured resilient products to be recycled. Participating in re[TURN]® lowers carbon emissions of these products by reducing virgin materials needed for making new products.

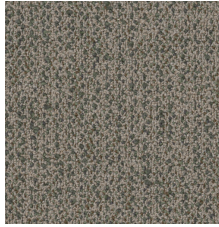
PRODUCT PACKAGING

100% Recyclable

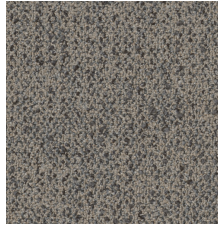


M | Static Noise

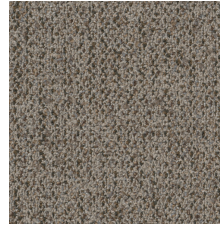
Available Colorways



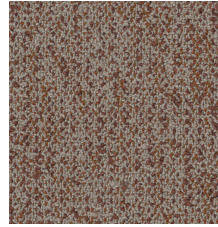
SAGE 00130



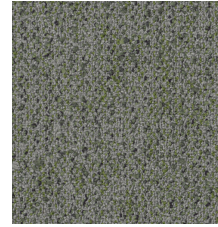
FLINT 00155



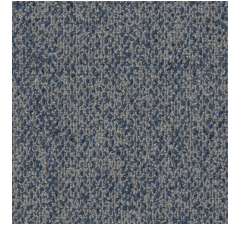
TOFFEE 00175



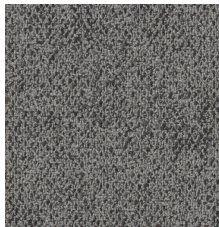
TERRACOTTA 00180



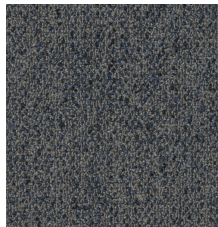
MATCHA 00310



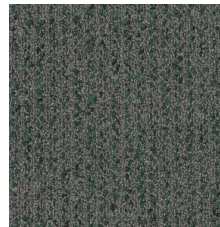
CERULEAN 00410



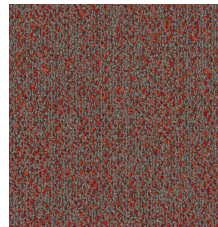
CHROME 00510



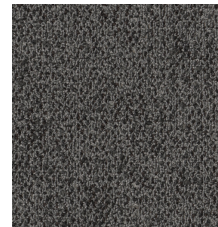
MARLIN 00540



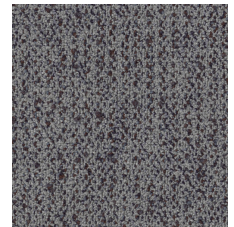
JUNIPER 00550



SCARLET 00585



RAVEN 00590



AUBERGINE 00910



Specifications are subject to nominal manufacturing variances. Material supply and/or manufacturing processes may necessitate specification changes without notice. This carpet is an exclusive design and may not be duplicated in any manner. Use of this design in the creation of another carpet design is also strictly prohibited. Visit patcraft.com/testing for more information.