

M | Scholastic II PRODUCT SPECIFICATIONS

COLLECTION	Scholastic II
STYLE NUMBER	10125
PRODUCT TYPE	Tile
CONSTRUCTION	Textured Loop
FIBER TYPE	EcoSolution Q® Nylon
DYE METHOD	100% Solution Dyed
PRIMARY BACKING	Non-Woven Synthetic
SECONDARY BACKING	EcoWorx® Tile
PROTECTIVE TREATMENTS	SSP® Shaw Soil Protection
GSA APPROVED PRODUCT	Yes

	US Units	Metric Units
PRODUCT SIZE	24 inches x 24 inches	60.96 cm x 60.96 cm
AREA PER BOX	48 ft ²	4.46 m ²
PIECES PER BOX	12	
GAUGE	1/10 inches	39.37 per 10 cm
STITCHES	9 per inches	35.43 per 10 cm
FINISHED PILE THICKNESS	0.104 inches	2.64 mm
AVERAGE DENSITY	6923 oz/yd ³	0.26 g/cm ³
KILOTEX		11.32
TOTAL THICKNESS	0.259 inches	6.58 mm
TUFTED YARN WEIGHT	20 oz/yd ²	678.12 g/m ²

Performance Testing

PILL TEST	Pass
RADIANT PANEL	Class I
NBS SMOKE	Less than 450
ELECTROSTATIC PROPENSITY	Less than 3.5 kv
CRI GREENLABEL PLUS	GLP9968
ADA COMPLIANCE	>0.6, meets the recommended static coefficient of friction for ADA walking surfaces and accessible routes

Test Reports may be included or listed by the manufacturing/inventory style number as opposed to the noted selling style number.

Warranty

[Lifetime Commercial Limited](#)

Please visit patcraft.com for the most current warranty information.

Installation Methods



Monolithic

[Installation Guidelines](#)

[Maintenance Guidelines](#)

M | Scholastic II

Environmental Specifications

RECYCLABILITY 100% recyclable

Materials

Ingredients

DOES NOT CONTAIN does not contain PVC, phthalates or PBD/PBDE

Recycled Content

TOTAL RECYCLED CONTENT (BY WEIGHT) 35%

PRE-CONSUMER 35%

POST-CONSUMER 0%

COUNTRY OF ORIGIN (MANUFACTURER) USA

Meets or exceeds all local and national regulations in country of manufacture. Manufactured in an ISO9001 & ISO14001 certified facility or equivalent. Recycled content is calculated using system allocation, mass balance, and direct insertion. The actual recycled content in this product will likely vary. For more information email info@patcraft.com.

Third Party Certifications

CRADLE TO CRADLE CERTIFIED®

Silver Level (Version 4.0)

HEALTH PRODUCT DECLARATION (HPD)

1,000 ppm Disclosure

ENVIRONMENTAL PRODUCT DECLARATION (EPD)

3rd Party Certified in Accordance with ISO14044, ISO14025 & EN15804

DECLARE

LBC Compliant

NSF 140

Gold

CRI GREEN LABEL PLUS (GLP)

GLP9968

ENVIRONMENTAL GUARANTEE

The products in this collection are In The Loop – they are fully recyclable through our re[TURN]® Reclamation Program. We will facilitate the pick-up and free return of a minimum of 100 SY of EcoWorx®, 500 SY of ReWorx™ products or 5,000 SF of Shaw-manufactured resilient products to be recycled. Participating in re[TURN]® lowers carbon emissions of these products by reducing virgin materials needed for making new products.

PRODUCT PACKAGING

100% Recyclable

USGBC LEED

contributes



Specifications are subject to nominal manufacturing variances. Material supply and/or manufacturing processes may necessitate specification changes without notice. This carpet is an exclusive design and may not be duplicated in any manner. Use of this design in the creation of another carpet design is also strictly prohibited. Visit patcraft.com/testing for more information.

M | Scholastic II

Available Colorways



GRADUATE PROGRA
00200



CURRICULA 00201



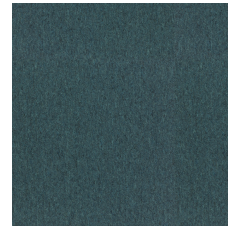
BOWL GAMES 00300



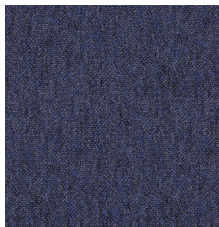
FINANCIAL AID 00301



TENURE 00302



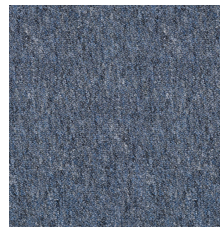
ENROLLMENT 00370



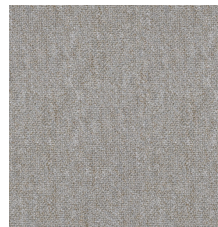
ACADEMIC PROBAT
00401



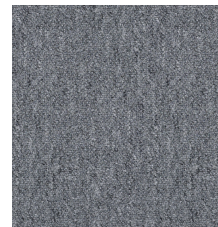
TRANSCRIPT 00402



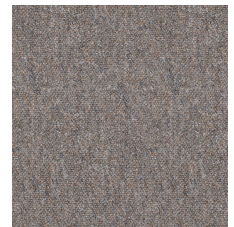
TUITION 00471



ELECTIVE 00501



FINALS 00525



INTRAMURAL 00570



UNDERGRADUATE
00572



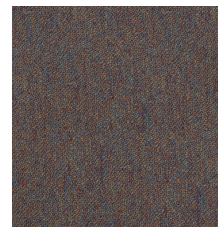
LABORATORY 00600



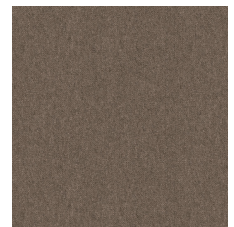
DROP & ADD 00700



STUDENT LOANS 00701



DEAN 00702



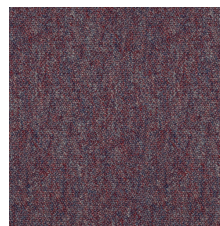
SEMESTER 00760



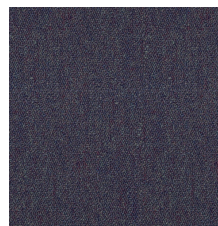
FRATERNITY 00765



SYLLABUS 00770



SORORITY 00871



MIDTERM 00960