

M | Structure Arc

PRODUCT SPECIFICATIONS



COLLECTION	Deconstructed Form
STYLE NUMBER	10599
PRODUCT TYPE	Plank
CONSTRUCTION	Multi-Level Pattern Loop
FIBER TYPE	EcoSolution Q100® Nylon
DYE METHOD	100% Solution Dyed
PRIMARY BACKING	Non-Woven Synthetic
SECONDARY BACKING	EcoWorx® Tile

PRODUCT SIZE
AREA PER BOX
PIECES PER BOX
GAUGE
STITCHES
FINISHED PILE THICKNESS
AVERAGE DENSITY
KILOTEX
TOTAL THICKNESS
TUFTED YARN WEIGHT

US Units
18 inches x 36 inches
45 ft ²
10
1/12 inches
10.17 per inches
0.122 inches
6492 oz/yd ³
0.26 inches
22 oz/yd ²

Metric Units
45.72 cm x 91.44 cm
4.18 m ²
47.24 per 10 cm
40.03 per 10 cm
3.10 mm
0.24 g/cm ³
11.35
6.60 mm
745.93 g/m ²

Performance Testing

PILL TEST	Pass
RADIANT PANEL	Class I
NBS SMOKE	Less than 450
ELECTROSTATIC PROPENSITY	Less than 3.5 kv
CRI GREENLABEL PLUS	GLP9968
ADA COMPLIANCE	>0.6, meets the recommended static coefficient of friction for ADA walking surfaces and accessible routes

Test Reports may be included or listed by the manufacturing/inventory style number as opposed to the noted selling style number.

Warranty

Lifetime Commercial Limited

Please visit [patcraft.com](https://www.patcraft.com) for the most current warranty information.

M | Structure Arc

Installation Methods



Basketweave



Herringbone



Boxed In



Brick



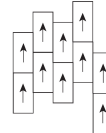
Half Basketweave



Monolithic



Ashlar



Stagger

[Installation Guidelines](#)

[Maintenance Guidelines](#)

Materials

Recycled Content

TOTAL RECYCLED CONTENT (BY WEIGHT)	58%
PRE-CONSUMER	58%
POST-CONSUMER	0%
COUNTRY OF ORIGIN (MANUFACTURER)	USA

Meets or exceeds all local and national regulations in country of manufacture. Manufactured in an ISO9001 & ISO14001 certified facility or equivalent. Recycled content is calculated using system allocation, mass balance, and direct insertion. The actual recycled content in this product will likely vary. For more information email info@patcraft.com.

Third Party Certifications

CRADLE TO CRADLE CERTIFIED®

[Silver Level \(Version 4.0\)](#)

HEALTH PRODUCT DECLARATION (HPD)

[1,000 ppm Disclosure](#)

ENVIRONMENTAL PRODUCT DECLARATION (EPD)

[3rd Party Certified in Accordance with ISO14044, ISO14025 & EN15804](#)

DECLARE

[LBC Compliant](#)

NSF 140

[Gold](#)

CRI GREEN LABEL PLUS (GLP)

[GLP9968](#)

ENVIRONMENTAL GUARANTEE

The products in this collection are In The Loop – they are fully recyclable through our re[TURN]® Reclamation Program. We will facilitate the pick-up and free return of a minimum of 100 SY of EcoWorx®, 500 SY of ReWorx™ products or 5,000 SF of Shaw-manufactured resilient products to be recycled. Participating in re[TURN]® lowers carbon emissions of these products by reducing virgin materials needed for making new products.

PRODUCT PACKAGING

[100% Recyclable](#)



Due to the design and construction of this product, the tufted weight will vary significantly with a range greater than +/- 7%. Also, any calculations based on tufted weight such as pile density will also vary with a range greater than +/- 7%.

Specifications are subject to nominal manufacturing variances. Material supply and/or manufacturing processes may necessitate specification changes without notice. This carpet is an exclusive design and may not be duplicated in any manner. Use of this design in the creation of another carpet design is also strictly prohibited. Visit patcraft.com/testing for more information.

M | Structure Arc

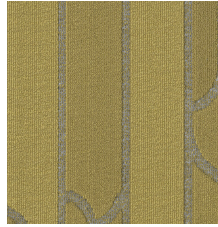
Available Colorways



POINT 00100



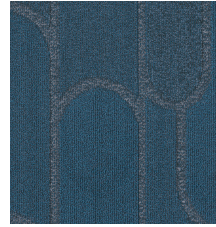
CONTOUR 00150



PARALLEL 00200



SHAPE 00380



ACUTE 00460



OBTUSE 00510



LINE 00550



CURVE 00590



RADIUS 00700