

# M | Transverse PRODUCT SPECIFICATIONS



<b>COLLECTION</b>	Infrastructure
<b>STYLE NUMBER</b>	10520
<b>PRODUCT TYPE</b>	Tile
<b>CONSTRUCTION</b>	Multi-Level Pattern Loop
<b>FIBER TYPE</b>	EcoSolution Q100® Nylon
<b>DYE METHOD</b>	100% Solution Dyed
<b>PRIMARY BACKING</b>	Non-Woven Synthetic
<b>SECONDARY BACKING</b>	EcoWorx® Tile
<b>PROTECTIVE TREATMENTS</b>	SSP® Shaw Soil Protection
<b>GSA APPROVED PRODUCT</b>	Yes

	<b>US Units</b>	<b>Metric Units</b>
<b>PRODUCT SIZE</b>	24 inches x 24 inches	60.96 cm x 60.96 cm
<b>AREA PER BOX</b>	48 ft <sup>2</sup>	4.46 m <sup>2</sup>
<b>PIECES PER BOX</b>	12	
<b>GAUGE</b>	1/10 inches	39.37 per 10 cm
<b>STITCHES</b>	9.83 per inches	38.71 per 10 cm
<b>FINISHED PILE THICKNESS</b>	0.068 inches	1.73 mm
<b>AVERAGE DENSITY</b>	8471 oz/yd <sup>3</sup>	0.31 g/cm <sup>3</sup>
<b>KILOTEX</b>		9.07
<b>TOTAL THICKNESS</b>	0.216 inches	5.49 mm
<b>TUFTED YARN WEIGHT</b>	16 oz/yd <sup>2</sup>	542.49 g/m <sup>2</sup>

## Performance Testing

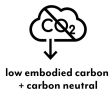
<b>PILL TEST</b>	Pass
<b>RADIANT PANEL</b>	Class I
<b>NBS SMOKE</b>	Less than 450
<b>ELECTROSTATIC PROPENSITY</b>	Less than 3.5 kv
<b>CRI GREENLABEL PLUS</b>	GLP9968
<b>ADA COMPLIANCE</b>	>0.6, meets the recommended static coefficient of friction for ADA walking surfaces and accessible routes

Test Reports may be included or listed by the manufacturing/inventory style number as opposed to the noted selling style number.

## Warranty

Lifetime Commercial Limited

Please visit [patcraft.com](http://patcraft.com) for the most current warranty information.



# M | Transverse

## Installation Methods



Quarter Turn   Random   Monolithic   Brick   Ashlar

[Installation Guidelines](#)

[Maintenance Guidelines](#)

## Environmental Specifications

<b>RECYCLABILITY</b>	100% recyclable
<b>EMBODIED CARBON (CRADLE TO GATE)</b>	3.67 Kg CO <sub>2</sub> /M <sup>2</sup>
<b>LIFE-CYCLE CARBON EMISSIONS</b>	Carbon Neutral

## Materials

### Ingredients

**DOES NOT CONTAIN** does not contain PVC, phthalates or PBD/PBDE

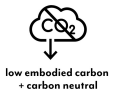
### Recycled Content

<b>TOTAL RECYCLED CONTENT (BY WEIGHT)</b>	56%
<b>PRE-CONSUMER</b>	56%
<b>POST-CONSUMER</b>	0%
<b>COUNTRY OF ORIGIN (MANUFACTURER)</b>	USA

Meets or exceeds all local and national regulations in country of manufacture. Manufactured in an ISO9001 & ISO14001 certified facility or equivalent. Recycled content is calculated using system allocation, mass balance, and direct insertion. The actual recycled content in this product will likely vary. For more information email [info@patcraft.com](mailto:info@patcraft.com).

## Third Party Certifications

<b>CRADLE TO CRADLE CERTIFIED®</b>	Silver Level (Version 4.0)
<b>HEALTH PRODUCT DECLARATION (HPD)</b>	1,000 ppm Disclosure
<b>ENVIRONMENTAL PRODUCT DECLARATION (EPD)</b>	3rd Party Certified in Accordance with ISO14044, ISO14025 & EN15804
<b>DECLARE</b>	LBC Compliant
<b>NSF 140</b>	Gold
<b>CRI GREEN LABEL PLUS (GLP)</b>	GLP9968
<b>ENVIRONMENTAL GUARANTEE</b>	The products in this collection are In The Loop – they are fully recyclable through our re[TURN]® Reclamation Program. We will facilitate the pick-up and free return of a minimum of 100 SY of EcoWorx®, 500 SY of ReWorx™ products or 5,000 SF of Shaw-manufactured resilient products to be recycled. Participating in re[TURN]® lowers carbon emissions of these products by reducing virgin materials needed for making new products.
<b>PRODUCT PACKAGING</b>	100% Recyclable
<b>USGBC LEED</b>	contributes
<b>BUILDING RESEARCH ESTABLISHMENT</b>	certified
<b>GOOD ENVIRONMENTAL CHOICE AUSTRALIA</b>	certified



# M | Transverse

## Available Colorways



CHALK LINE 00100



MODULUS 00120



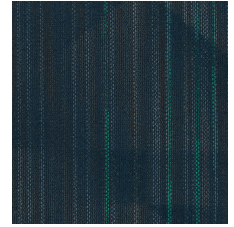
RISER 00150



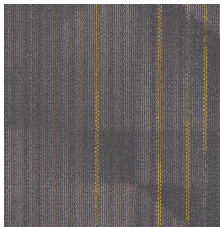
CORNICE 00175



STRUCTURE 00180



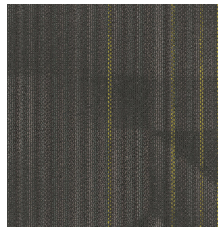
BRACKET 00450



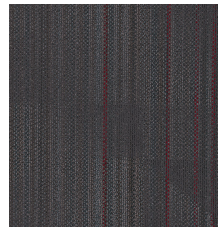
REBAR 00500



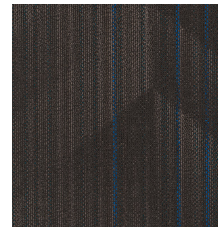
TRESTLE 00530



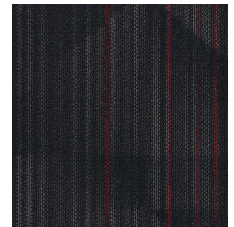
PARTITION 00550



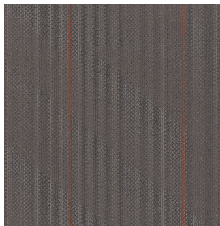
LINTELL 00570



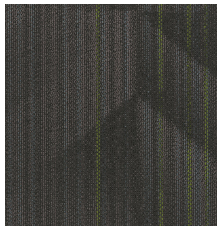
FOUNDATION 00580



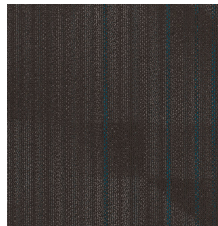
ASPHALT 00590



MORTAR 00700



STANCHION 00720



CONNECTOR 00750



Specifications are subject to nominal manufacturing variances. Material supply and/or manufacturing processes may necessitate specification changes without notice. This carpet is an exclusive design and may not be duplicated in any manner. Use of this design in the creation of another carpet design is also strictly prohibited. Visit [patcraft.com/testing](http://patcraft.com/testing) for more information.