

low embodied carbon
+ carbon neutral

patcraft®

M | Valencia PRODUCT SPECIFICATIONS



COLLECTION	Estrato
STYLE NUMBER	10493
PRODUCT TYPE	Tile
CONSTRUCTION	Multi-Level Pattern Loop
FIBER TYPE	EcoSolution Q100® Nylon
DYE METHOD	100% Solution Dyed
PRIMARY BACKING	Non-Woven Synthetic
SECONDARY BACKING	EcoWorx® Tile
PROTECTIVE TREATMENTS	SSP® Shaw Soil Protection
GSA APPROVED PRODUCT	Yes

	US Units	Metric Units
PRODUCT SIZE	24 inches x 24 inches	60.96 cm x 60.96 cm
AREA PER BOX	48 ft ²	4.46 m ²
PIECES PER BOX	12	
GAUGE	1/10 inches	39.37 per 10 cm
STITCHES	8.5 per inches	33.46 per 10 cm
FINISHED PILE THICKNESS	0.116 inches	2.95 mm
AVERAGE DENSITY	8069 oz/yd ³	0.30 g/cm ³
KILOTEX		7.75
TOTAL THICKNESS	0.28 inches	7.11 mm
TUFTED YARN WEIGHT	26 oz/yd ²	881.55 g/m ²

Performance Testing

PILL TEST	Pass
RADIANT PANEL	Class I
NBS SMOKE	Less than 450
ELECTROSTATIC PROPENSITY	Less than 3.5 kv
CRI GREENLABEL PLUS	GLP9968
ADA COMPLIANCE	>0.6, meets the recommended static coefficient of friction for ADA walking surfaces and accessible routes

Test Reports may be included or listed by the manufacturing/inventory style number as opposed to the noted selling style number.

Warranty

[Lifetime Commercial Limited](#)

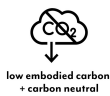
Please visit [patcraft.com](https://www.patcraft.com) for the most current warranty information.

PATCRAFT.COM / @PATCRAFTFLOORS / 800.241.4014

© 2025 Shaw Industries Group, Inc., a Berkshire Hathaway Company

TRANSFORMSPACE

For reference purposes only if printed or downloaded.



M | Valencia

Installation Methods



Quarter Turn



Random



Monolithic



Brick



Ashlar

[Installation Guidelines](#)

[Maintenance Guidelines](#)

Environmental Specifications

RECYCLABILITY	100% recyclable
EMBODIED CARBON (CRADLE TO GATE)	3.87 Kg CO ₂ /M ²
LIFE-CYCLE CARBON EMISSIONS	Carbon Neutral

Materials

Ingredients

DOES NOT CONTAIN	does not contain PVC, phthalates or PBD/PBDE
-------------------------	--

Recycled Content

TOTAL RECYCLED CONTENT (BY WEIGHT)	60%
PRE-CONSUMER	60%
POST-CONSUMER	0%
COUNTRY OF ORIGIN (MANUFACTURER)	USA

Meets or exceeds all local and national regulations in country of manufacture. Manufactured in an ISO9001 & ISO14001 certified facility or equivalent. Recycled content is calculated using system allocation, mass balance, and direct insertion. The actual recycled content in this product will likely vary. For more information email info@patcraft.com.

Third Party Certifications

CRADLE TO CRADLE CERTIFIED®	Silver Level (Version 4.0)
HEALTH PRODUCT DECLARATION (HPD)	1,000 ppm Disclosure
ENVIRONMENTAL PRODUCT DECLARATION (EPD)	3rd Party Certified in Accordance with ISO14044, ISO14025 & EN15804
DECLARE	LBC Compliant
NSF 140	Gold
CRI GREEN LABEL PLUS (GLP)	GLP9968
ENVIRONMENTAL GUARANTEE	The products in this collection are In The Loop – they are fully recyclable through our re[TURN]® Reclamation Program. We will facilitate the pick-up and free return of a minimum of 100 SY of EcoWorx®, 500 SY of ReWorx™ products or 5,000 SF of Shaw-manufactured resilient products to be recycled. Participating in re[TURN]® lowers carbon emissions of these products by reducing virgin materials needed for making new products.
PRODUCT PACKAGING	100% Recyclable
USGBC LEED	contributes
BUILDING RESEARCH ESTABLISHMENT	certified
GOOD ENVIRONMENTAL CHOICE AUSTRALIA	certified

M | Valencia

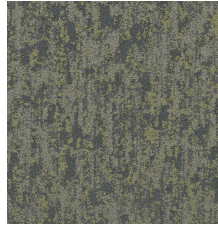
Available Colorways



DORADO 00200



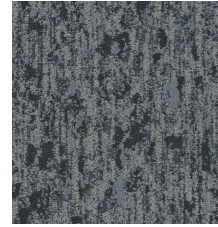
MARINA 00300



MUSGO 00350



AZULADO 00400



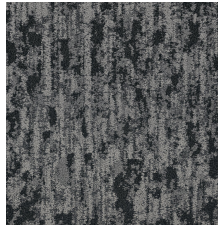
AZUL 00490



COBRE 00500



PLATA 00560



MACADAN 00590



MOHO 00750



CACAO 00780



Specifications are subject to nominal manufacturing variances. Material supply and/or manufacturing processes may necessitate specification changes without notice. This carpet is an exclusive design and may not be duplicated in any manner. Use of this design in the creation of another carpet design is also strictly prohibited. Visit patcraft.com/testing for more information.