

M | Valley 18X36

PRODUCT SPECIFICATIONS



COLLECTION	Amplified Nature
STYLE NUMBER	10644
PRODUCT TYPE	Plank
CONSTRUCTION	Multi-Level Pattern Cut/Loop
FIBER TYPE	EcoSolution Q100® Nylon
DYE METHOD	100% Solution Dyed
PRIMARY BACKING	Non-Woven Synthetic
SECONDARY BACKING	EcoWorx® Tile

PRODUCT SIZE

AREA PER BOX

PIECES PER BOX

GAUGE

STITCHES

FINISHED PILE THICKNESS

AVERAGE DENSITY

KILOTEX

TOTAL THICKNESS

TUFTED YARN WEIGHT

US Units

18 inches x 36 inches

45 ft²

10

1/12 inches

10 per inches

0.132 inches

5727 oz/yd³

0.254 inches

21 oz/yd²

Metric Units

45.72 cm x 91.44 cm

4.18 m²

47.24 per 10 cm

39.37 per 10 cm

3.35 mm

0.21 g/cm³

11.17

6.45 mm

712.02 g/m²

Performance Testing

PILL TEST

Pass

RADIANT PANEL

Class I

NBS SMOKE

Less than 450

ELECTROSTATIC PROPENSITY

Less than 3.5 kv

CRI GREENLABEL PLUS

GLP9968

ADA COMPLIANCE

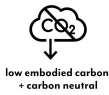
>0.6, meets the recommended static coefficient of friction for ADA walking surfaces and accessible routes

Test Reports may be included or listed by the manufacturing/inventory style number as opposed to the noted selling style number.

Warranty

Lifetime Commercial Limited

Please visit [patcraft.com](https://www.patcraft.com) for the most current warranty information.



M | Valley 18X36

Installation Methods



Basketweave



Herringbone



Boxed In



Brick



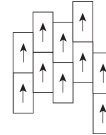
Half Basketweave



Monolithic



Ashlar



Stagger

[Installation Guidelines](#)

[Maintenance Guidelines](#)

EMBODIED CARBON (CRADLE TO GATE)

3.77 Kg CO₂/M²

LIFE-CYCLE CARBON EMISSIONS

Carbon Neutral

Materials

Recycled Content

TOTAL RECYCLED CONTENT (BY WEIGHT)

58%

PRE-CONSUMER

58%

POST-CONSUMER

0%

COUNTRY OF ORIGIN (MANUFACTURER)

USA

Meets or exceeds all local and national regulations in country of manufacture. Manufactured in an ISO9001 & ISO14001 certified facility or equivalent. Recycled content is calculated using system allocation, mass balance, and direct insertion. The actual recycled content in this product will likely vary. For more information email info@patcraft.com.

Third Party Certifications

CRADLE TO CRADLE CERTIFIED®

[Silver Level \(Version 4.0\)](#)

HEALTH PRODUCT DECLARATION (HPD)

[1,000 ppm Disclosure](#)

ENVIRONMENTAL PRODUCT DECLARATION (EPD)

[3rd Party Certified in Accordance with ISO14044, ISO14025 & EN15804](#)

DECLARE

[LBC Compliant](#)

NSF 140

[Gold](#)

CRI GREEN LABEL PLUS (GLP)

[GLP9968](#)

ENVIRONMENTAL GUARANTEE

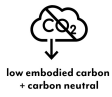
The products in this collection are In The Loop – they are fully recyclable through our re[TURN]® Reclamation Program. We will facilitate the pick-up and free return of a minimum of 100 SY of EcoWorx®, 500 SY of ReWorx™ products or 5,000 SF of Shaw-manufactured resilient products to be recycled. Participating in re[TURN]® lowers carbon emissions of these products by reducing virgin materials needed for making new products.

PRODUCT PACKAGING

100% Recyclable

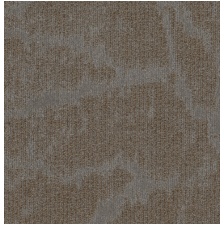


Specifications are subject to nominal manufacturing variances. Material supply and/or manufacturing processes may necessitate specification changes without notice. This carpet is an exclusive design and may not be duplicated in any manner. Use of this design in the creation of another carpet design is also strictly prohibited. Visit patcraft.com/testing for more information.



M | Valley 18X36

Available Colorways



AMBER 00110



POPLAR 00145



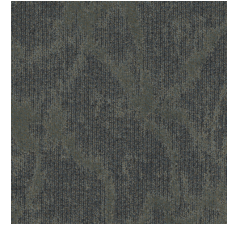
RIDGE 00200



ALPINE 00300



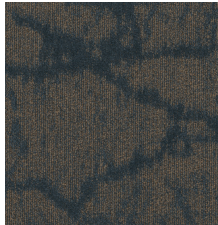
CYPRESS 00395



ALGAE 00400



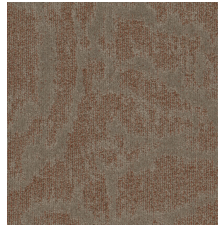
ADRIATIC 00425



TIDE 00450



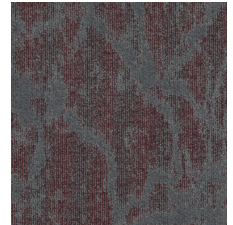
MOONLIGHT 00490



TERRACOTTA 00650



SILT 00700



SNAPDRAGON 00850