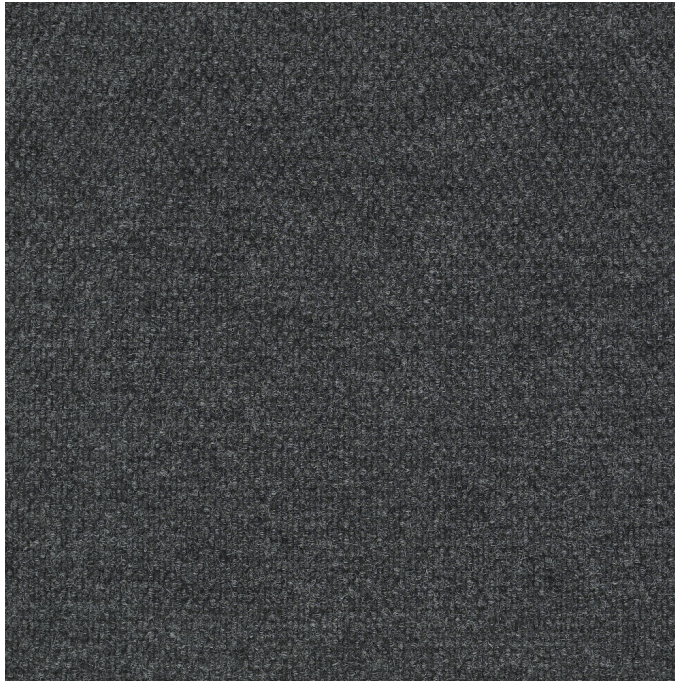


M | Walk Right In II

PRODUCT SPECIFICATIONS



COLLECTION	Foot In The Door II
STYLE NUMBER	10304
PRODUCT TYPE	Tile
CONSTRUCTION	Needlebond
FIBER TYPE	Polyester
DYE METHOD	100% Solution Dyed
PRIMARY BACKING	Polypropylene
SECONDARY BACKING	EcoWorx® Tile
GSA APPROVED PRODUCT	Yes

PRODUCT SIZE
AREA PER BOX
PIECES PER BOX
STITCHES
FINISHED PILE THICKNESS
AVERAGE DENSITY
TOTAL THICKNESS
TUFTED YARN WEIGHT
INSTALLATION PATTERN REPEAT

US Units
24 inches x 24 inches
48 ft ²
12
0.17 per inches
0.274 inches
6477 oz/yd ³
0.362 inches
49.3 oz/yd ²
0.03 ft W X 0.03 ft L

Metric Units
60.96 cm x 60.96 cm
4.46 m ²
0.66 per 10 cm
6.96 mm
0.24 g/cm ³
9.19 mm
1671.55 g/m ²
0.95 cm W X 0.95 cm L

Performance Testing

PILL TEST	Pass
RADIANT PANEL	Class I
NBS SMOKE	Less than 450
ELECTROSTATIC PROPENSITY	Less than 3.5 kv
CRI GREENLABEL PLUS	GLP0520
ADA COMPLIANCE	>0.6, meets the recommended static coefficient of friction for ADA walking surfaces and accessible routes

Test Reports may be included or listed by the manufacturing/inventory style number as opposed to the noted selling style number.

Warranty

Lifetime Commercial Limited

Please visit [patcraft.com](https://www.patcraft.com) for the most current warranty information.

M | Walk Right In II

Installation Methods



Quarter Turn

[Installation Guidelines](#)

[Maintenance Guidelines](#)

Environmental Specifications

RECYCLABILITY

100% recyclable

Materials

Ingredients

DOES NOT CONTAIN

does not contain PVC, phthalates or PBD/PBDE

COUNTRY OF ORIGIN (MANUFACTURER)

USA

Meets or exceeds all local and national regulations in country of manufacture. Manufactured in an ISO9001 & ISO14001 certified facility or equivalent. Recycled content is calculated using system allocation, mass balance, and direct insertion. The actual recycled content in this product will likely vary. For more information email info@patcraft.com.

Third Party Certifications

CRADLE TO CRADLE CERTIFIED®

[Bronze Level \(Version 3.1\)](#)

HEALTH PRODUCT DECLARATION (HPD)

[1,000 ppm Disclosure](#)

ENVIRONMENTAL PRODUCT DECLARATION (EPD)

[3rd Party Certified in Accordance with ISO14044, ISO14025 & EN15804](#)

DECLARE

[LBC Compliant](#)

NSF 140

[Gold](#)

CRI GREEN LABEL PLUS (GLP)

[GLP0520](#)

ENVIRONMENTAL GUARANTEE

The products in this collection are In The Loop – they are fully recyclable through our re[TURN]® Reclamation Program. We will facilitate the pick-up and free return of a minimum of 100 SY of EcoWorx®, 500 SY of ReWorx™ products or 5,000 SF of Shaw-manufactured resilient products to be recycled. Participating in re[TURN]® lowers carbon emissions of these products by reducing virgin materials needed for making new products.

PRODUCT PACKAGING

[100% Recyclable](#)

USGBC LEED

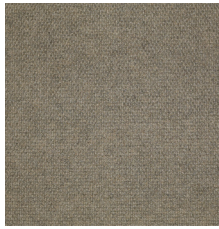
[contributes](#)



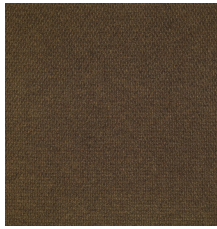
Specifications are subject to nominal manufacturing variances. Material supply and/or manufacturing processes may necessitate specification changes without notice. This carpet is an exclusive design and may not be duplicated in any manner. Use of this design in the creation of another carpet design is also strictly prohibited. Visit patcraft.com/testing for more information.

M | Walk Right In II

Available Colorways



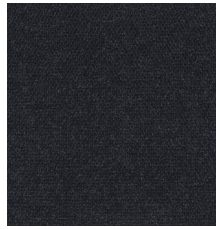
NATURAL BEIGE 00100



TOBACCO 00200



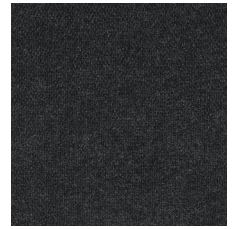
MULTICOLOR 00300



NAVY 00450



STERLING 00500



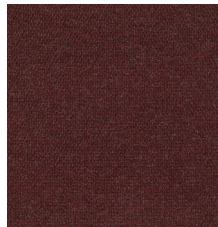
CHARCOAL 00590



EBONY 00595



CHOCOLATE 00700



RED 00800



WALNUT 00850