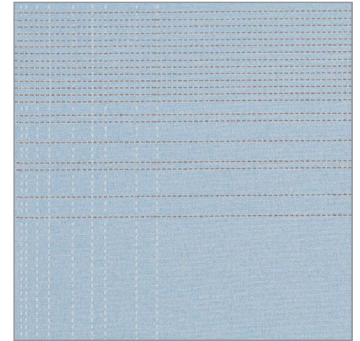


Cleaning Guide

Pattern: **Stitched**
AC#: **33360 - 33365**
Content: **54% PCR Polyester, 46% FR Polyester**
Bleach Cleanable: **May be cleaned with bleach following the proper ratio of 90% water : 10% bleach.**



General Cleaning Recommendation:

Wash Cycle:

Process as ordinary colored fabric, temperature not to exceed 160°F. **Use synthetic detergent.** Add fabric softener to the last rinse.

Extracting Cycle:

Fabric requires no more than 2-4 minutes extracting, depending on the size of the load and equipment used.

Drying Cycle:

Do not overload dryer. Tumble dry 3-5 minutes on synthetic cycle (110°F). As with all polyester fabrics, excessive heat will detract from the permanent press characteristics of this fabric.

Finishing:

If the fabric is folded upon completion of drying cycle, no finishing is required. Occasional light touch-up with hand iron (275°F maximum), or Flat Bed Press with covered head may be desired for smoother seams.

Use cover cloth between fabric and iron or pressing head. Avoid prolonged contact with head.

Always process one single cubicle first before processing bulk cubicles. A thorough examination & evaluation of the test cubicle should be reviewed to make sure that the proper results are attained.

Do not use caustic soap. Do not put through mangle.