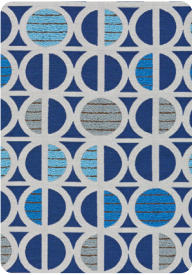


PATTERN INFO



Content:	44% Post Consumer Recycled Polyester, 37% Polyester, 19% Nylon
Finish/Backing:	Nanotex + Acrylic Backing
Application:	Upholstery
Repeat:	H: 13 ¾" x V: 12"
Width:	54"
AC#:	62810 - 62820
Skus:	11

ENVIRONMENT

- AB-2998 Compliant: Flame Retardant Free
- Meets Criteria for Healthier Hospital Initiative
- Antimicrobial Free | Antibacterial Free
- PFAS Free (including PFOA & PFOS Free)
- BPA, TRIS Free
- Formaldehyde Free
- PVC Free
- Phthalate Free
- Lead Free
- Heavy Metal Free
- Does Not Contain Conflict Minerals
- Proposition 65 Compliant
- LBC Red List Free
- REACH Compliant
- RoHS Compliant
- Low VOC's
- Contributes to LEED Certification
- Recycled Content

PERFORMANCE

- Abrasion Resistant
- Bleach Cleanable
- Water Based Stain Resistance

TESTING

This fabric has passed:

Flammability: California Bulletin #117-13; UFAC: Class 1 / NFPA 260

Abrasion: 150,000* Double Rubs (Wyzenbeek Method)

*Abrasion test results exceeding ACT Performance Guidelines are not an indicator of product lifespan. Multiple factors affect fabric durability and appearance retention.

Lightfastness: 40 Hours



CLEANING

Code: WS
Can be cleaned using 20% bleach maximum / 80% water solution.

Windlass is part of the Foundation Collection. Other patterns in this collection include Centring Stripe, Lunette, Mason Stripe, Oculus, Vault, and companion Quarry (Wall Surfaces).

Custom colors are available through our Options® Studio.