

Elemental
Wright



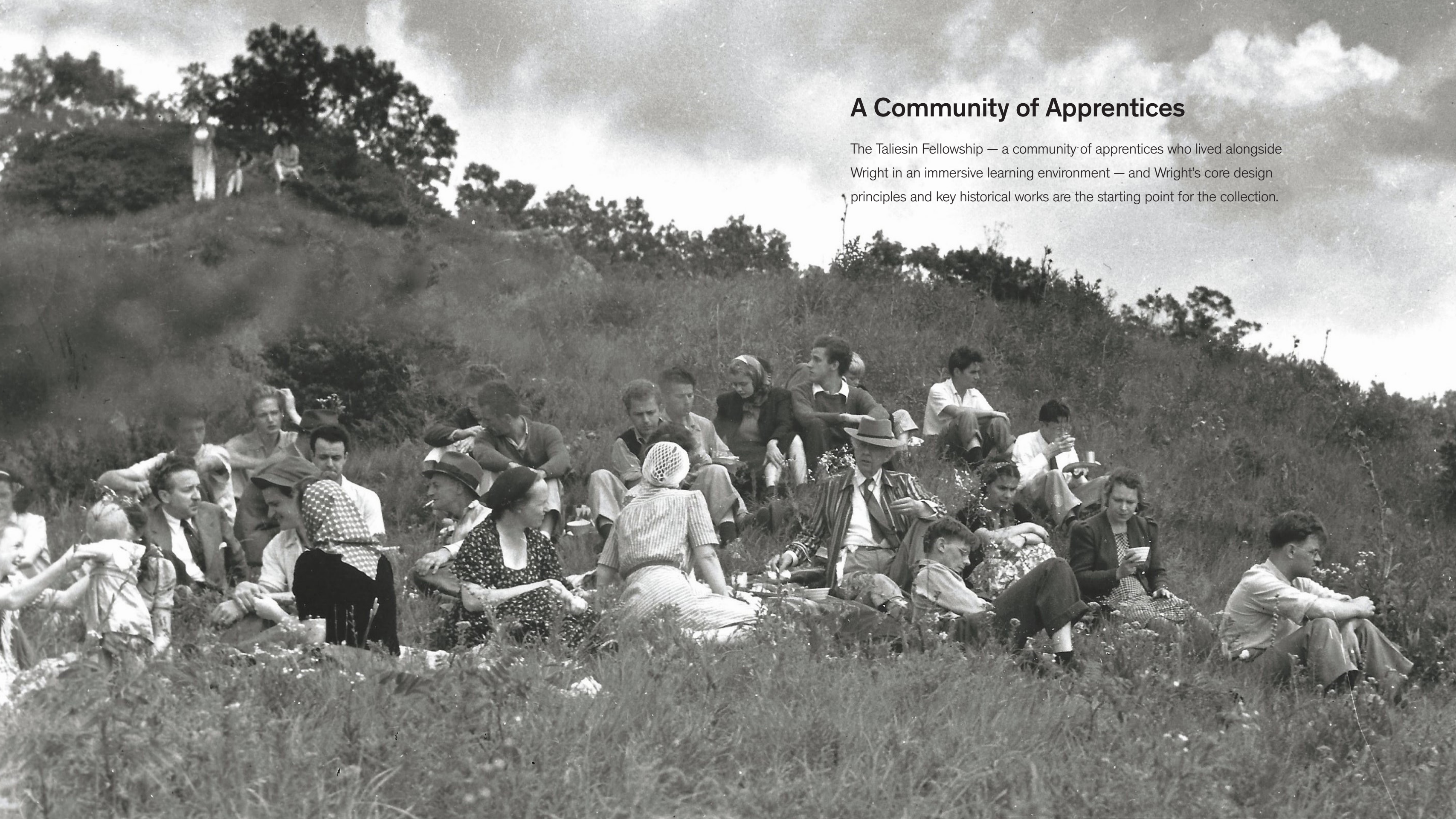
A Celebration of Learning and Iteration

Frank Lloyd Wright's teachings and philosophies are the root of a new collection of textiles, wallcoverings and custom materials, created by Designtex. In partnership with the Frank Lloyd Wright Foundation, Designtex has drawn from key principles and works that celebrate learning and iteration, as well as Wright's pioneering approach of incorporating nature with the built environment for improved well-being.

DESIGNTEX

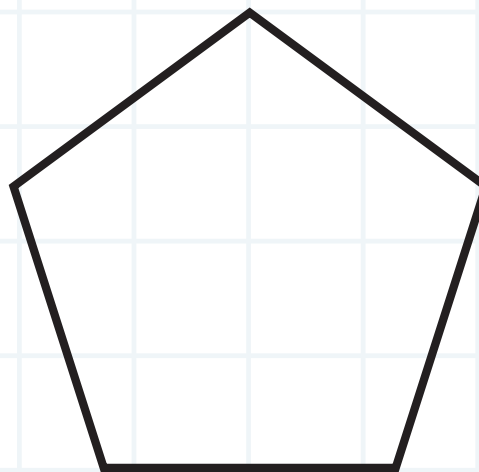
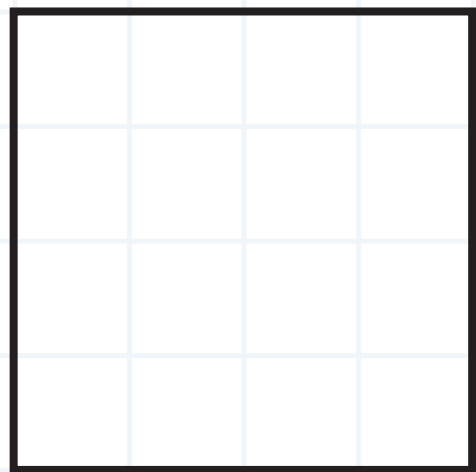
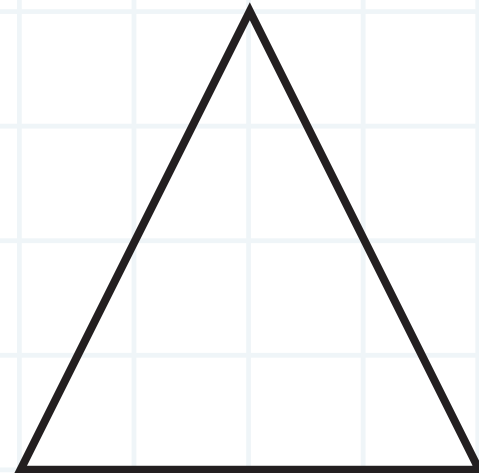
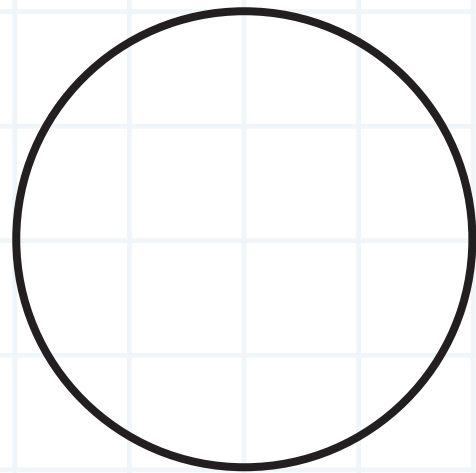


Circulate 9417-501



A Community of Apprentices

The Taliesin Fellowship — a community of apprentices who lived alongside Wright in an immersive learning environment — and Wright's core design principles and key historical works are the starting point for the collection.



Distilling the geometries of nature was one of Wright's deepest philosophies. Each of these textile designs celebrates a separate foundational element — the circle, the triangle and the pentagon — that Wright and his apprentices sought to honor in their 'organic architecture' designs and artwork.





Textiles

3086 Pentimento

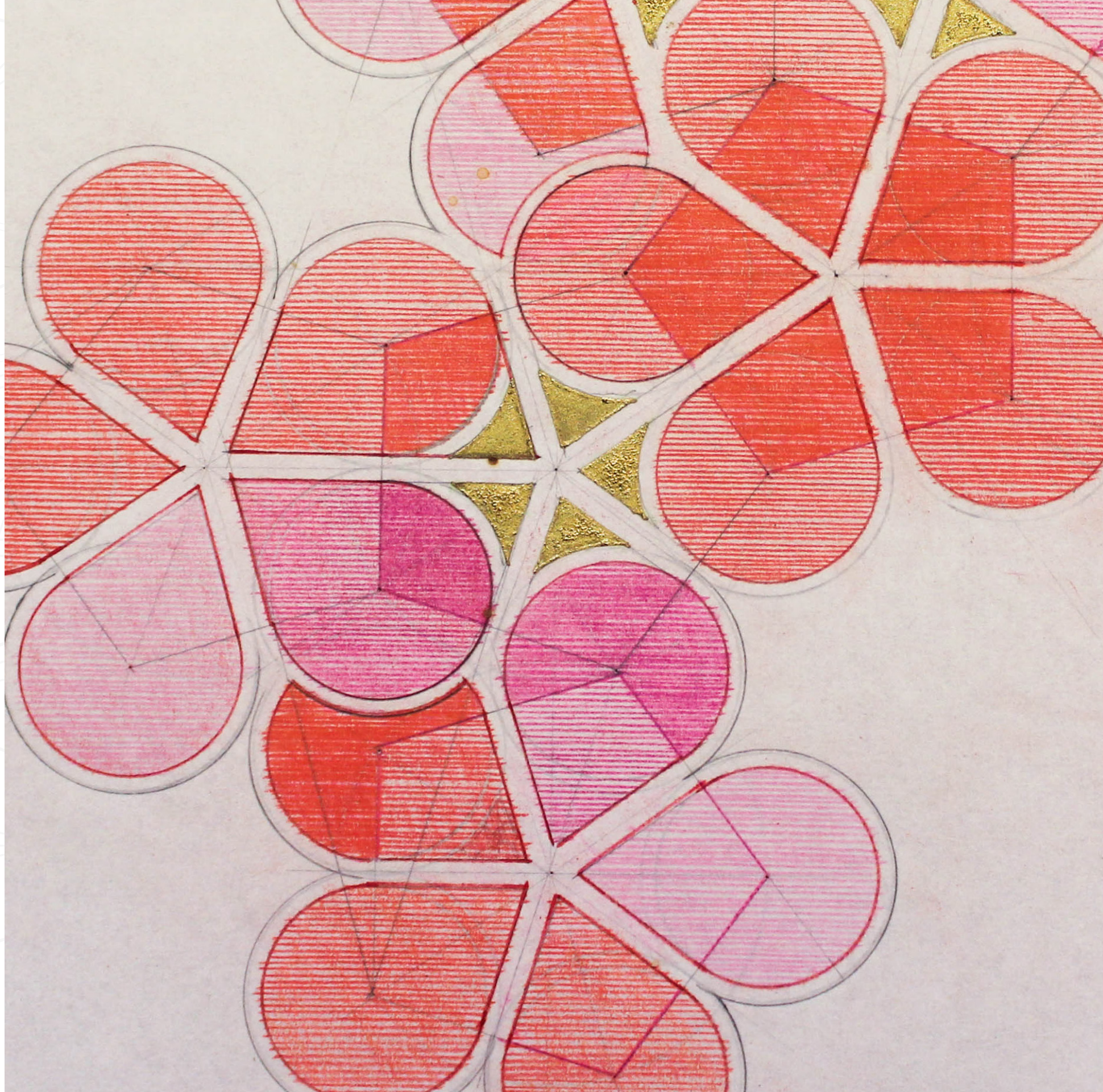
A systematic floral pattern that expresses the inherent geometry in nature. Through the linework of the design, the underlying geometric structure lays a visible groundwork for a playful floral. This type of organized structure is a fundamental component of the teachings of Frank Lloyd Wright.

- **5 colorways**
- **57% Polyester, 22% Acrylic, 21% Nylon**
- **HPD**
- **LEED**
- **Bleach (10:1)**
- **No PFAS, No Antimicrobials, No Flame Retardants**
- **100,000 Wyzenbeek double rubs**



Nature's Geometry

Based on a drawing made by Vernon D. Swaback, one of Wright's youngest apprentices, Pentimento features different weaves and a special slub yarn that are used in specific areas of the floral pattern to create a new transparency, tactility and depth, while still retaining the delicate, hand-drawn quality of the original work.





“Frank Lloyd Wright’s design principles predate concepts that are ubiquitous in wellness discussions today, like biophilic design, human-centered design, and evidence-based design – our innate human tendency to seek connections with nature”

Sara Balderi, Design Director

Pentimento 3086-901
Pause 3854-201





Circulate 9417-201, 402, 401, 101
Sidetrack 3026-202, 101, 401, 501



Circulate 9417-101

Textiles

9417 Circulate

This graphic pattern captures the infinite quality of the circle, a shape revered by Wright. Organized on a grid, it playfully experiments with a variety of textures, weaves and tones that bring tactility and reflect just how integral nature's foundational structures and principles were to Wright's core philosophies.

- **9 colorways**
- **76% Polyester, 17% Olefin, 7% Nylon**
- **HPD**
- **LEED**
- **Bleach (10:1)**
- **No PFAS, No Antimicrobials, No Flame Retardants**
- **100,000 Wyzenbeek double rubs**



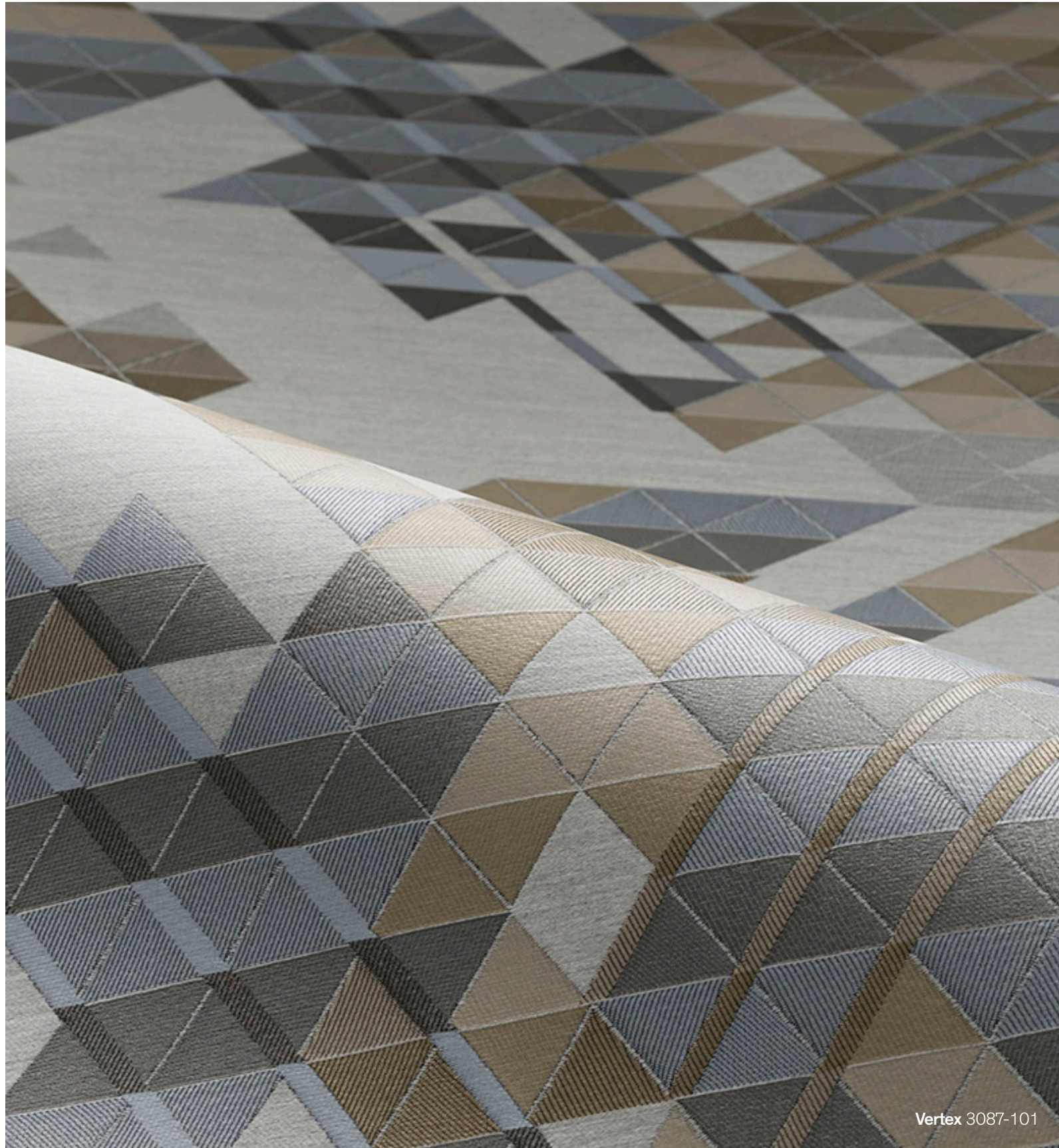
Circulate 9417-401, 501, 403, 201, 402, 101, 801, 802, 301

Circulate is based on a printed textile, originally part of the FLW 1955 collection, which marked Wright's first collection of commercial furnishings and textiles. Translating this into a woven textile creates a dimensional fabric featuring dots created with a heavy boucle, while others feature a subtle slub.









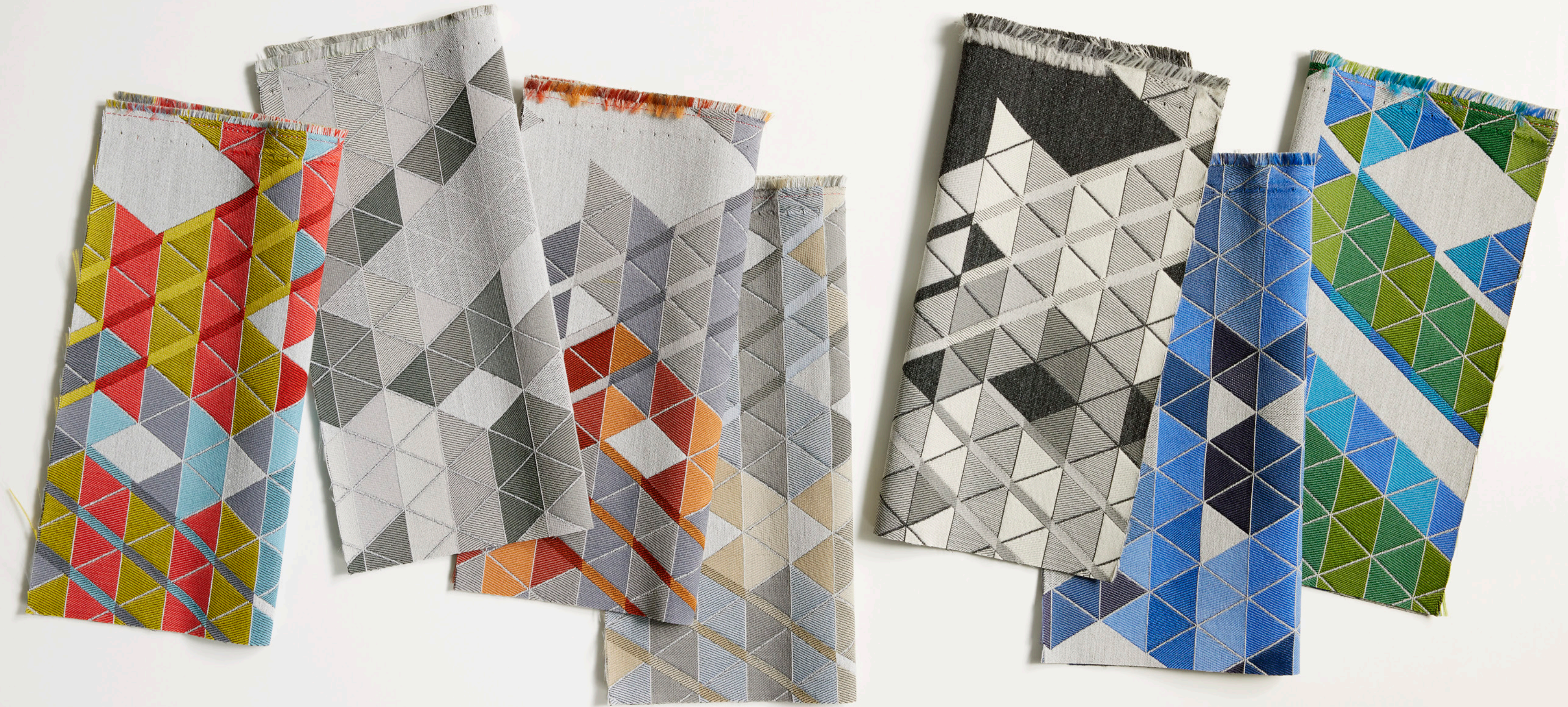
Textiles

3087 Vertex

This dynamic pattern presents an abstraction of natural forms on a triangular grid. The fractals nod to the repeated geometries found in our natural environment, also the basis of Wright's pioneering belief in creating 'an organic architecture' well before the formalized notions of biophilic design.

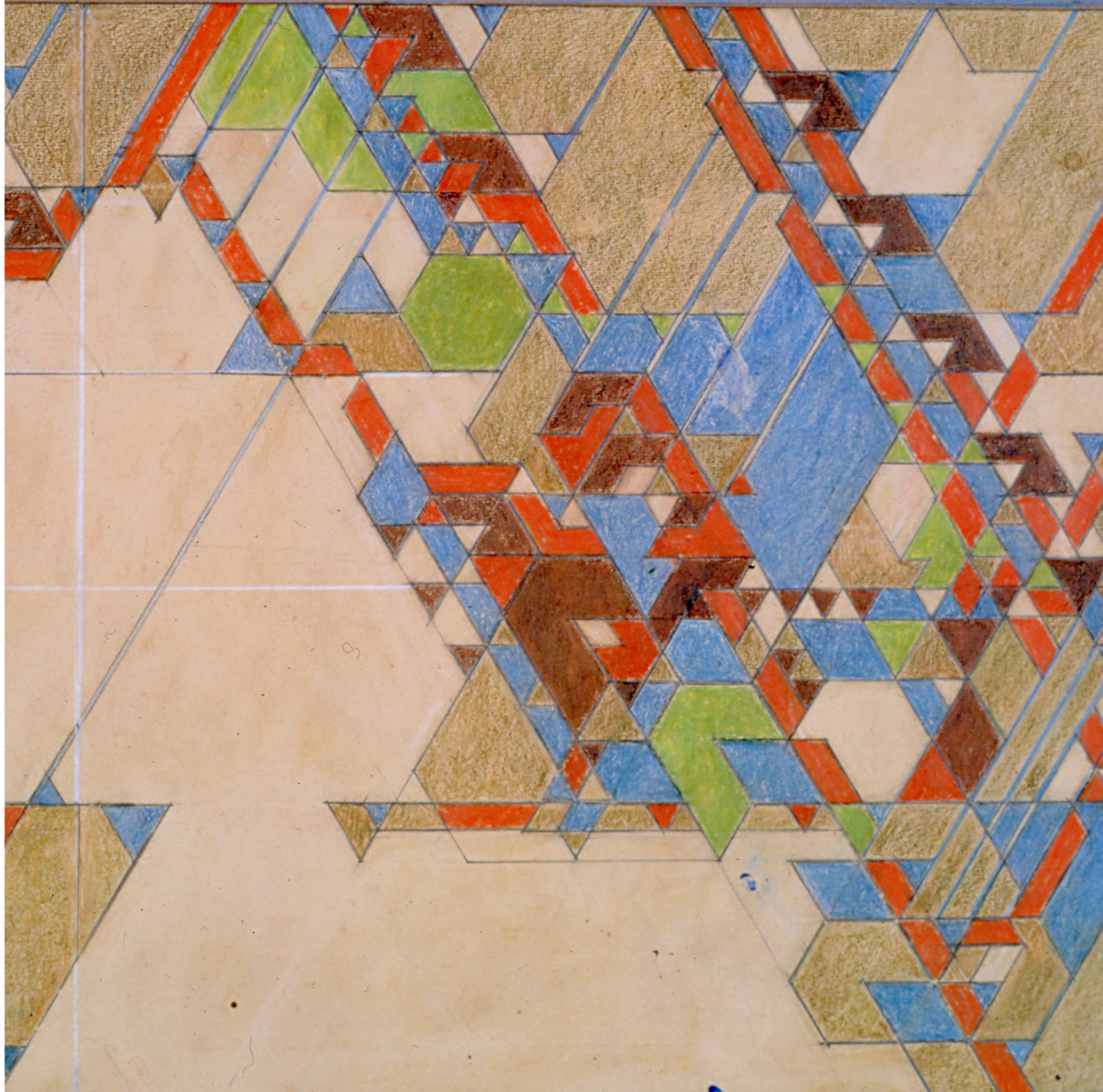
- **7 colorways**
- **38% Acrylic, 37% Polyester, 25% Nylon**
- **HPD**
- **LEED**
- **Bleach (10:1)**
- **No PFAS, No Antimicrobials, No Flame Retardants**
- **100,000 Wyzenbeek double rubs**

Vertex 3087-101



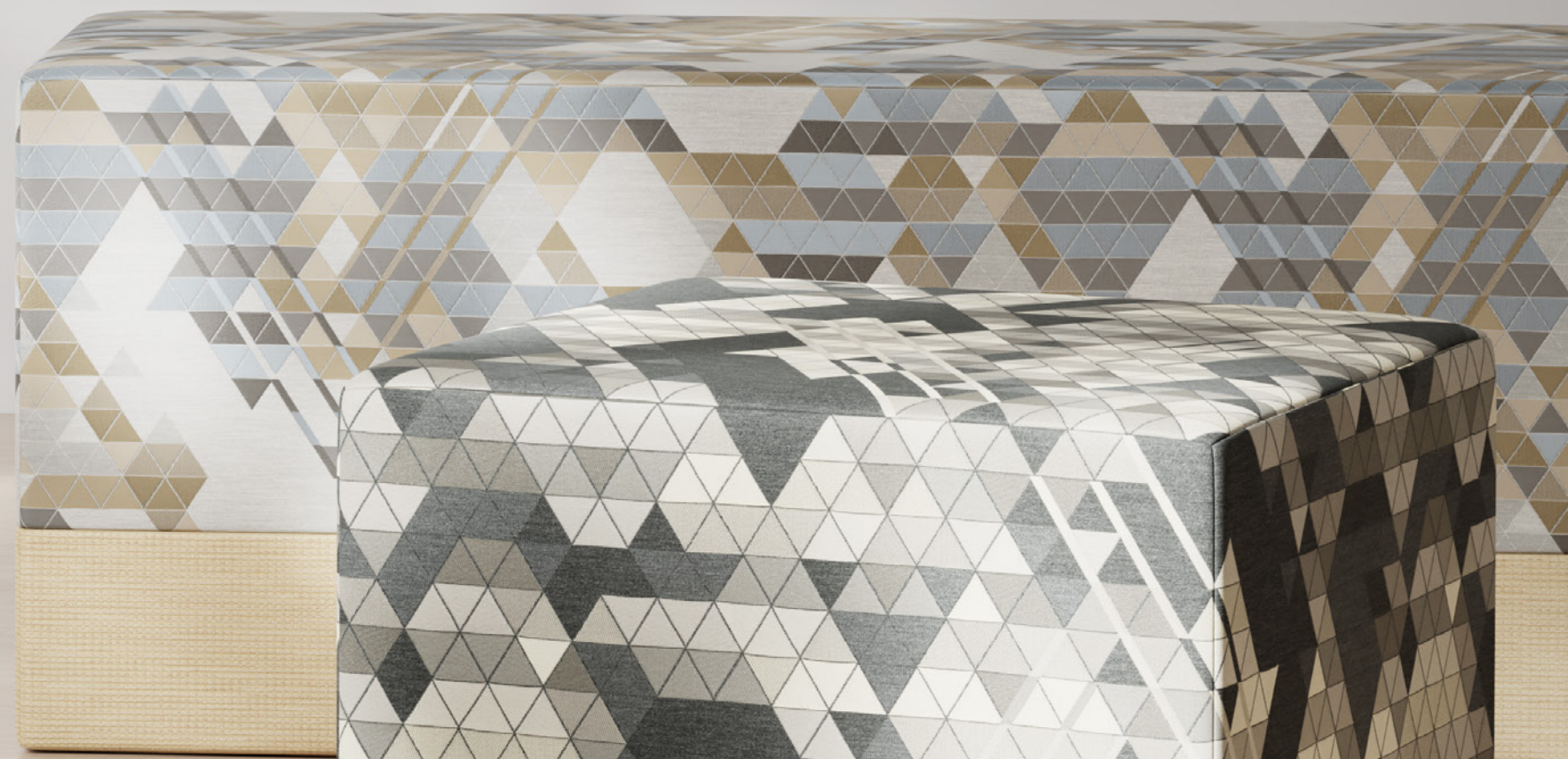
Abstraction of Natural Forms

Vertex is based on a pattern study by Eugene Masselink, an artist and designer who was one of Wright's earliest apprentices. The abstractions were a signature of Masselink's artistic style and became a recognised feature of the Fellowship's aesthetic.









Vertex 3087-301, 802, 101
Oslo 3115-301, 802, 101





Wright's belief that nature is at the core of everything led him to establish a distinctive grammar for each project within a universal geometry-based framework. These wallcovering designs build on the balance between order, pattern and color to convey the openness and movement in nature, while also serving as a creative prompt for designers to unify ornamentation with purpose.





Wallcovering

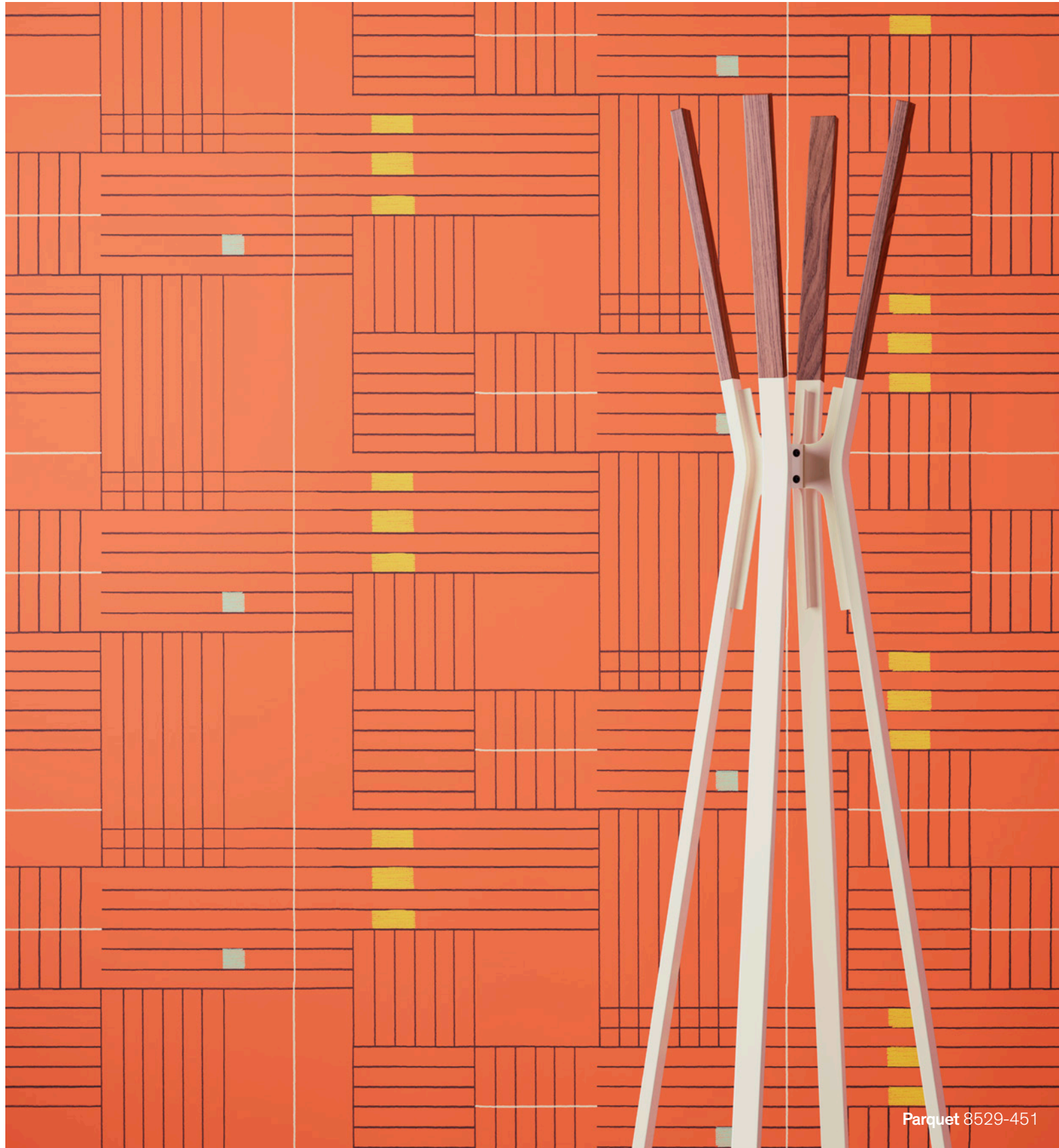
8538 Fellowship

Fellowship celebrates the underlying grids that ground much of Wright's work and is based on a section of Wright's scale drawing for the Hillside Theater Curtain. The lines are created with a pencil texture to add depth and recall the weight of the lines in the original drawing. The simple interplay of lines can bring both rhythmic energy and quiet moments into a space.

- **7 colorways**
- **10% Polyester, 40% Latex, 50% Cellulose**
- **Water-based (W)**
- **V 30 inches × H 25 inches**
- **Straight Hang, Straight Across Match**
- **Healthier Hospitals, HPD, LBC Red List Compliant, LEED, Mindful Materials, No Prop 65 Chemicals, SCS Indoor Advantage Gold, WELL**
- **Low VOC, No Antimicrobials, No Flame Retardants, No PFAS, No PVC**
- **Type II Characteristics**
- **ASTM E84 Adhered Class A**

Fellowship 8538-251





Wallcovering

8529 Parquet

Parquet is guided by Wright's thinking that architecture consists of a grammar, a vocabulary of pattern and form. The gridded design is interspersed with selective voids of space, to leave the eye wondering and wandering for more.

- 8 colorways
- 10% Polyester, 40% Latex, 50% Cellulose
- Water-based (W)
- V 18 inches × H 50 inches
- Straight Hang, Straight Across Match
- Healthier Hospitals, HPD, LBC Red List Compliant, LEED, Mindful Materials, No Prop 65 Chemicals, SCS Indoor Advantage Gold, WELL
- Low VOC, No Antimicrobials, No Flame Retardants, No PFAS, No PVC
- Type II Characteristics
- ASTM E84 Adhered Class A

Parquet 8529-451



Custom

The 1952 scale drawing by Frank Lloyd Wright, *Design for Hillside Theatre Curtain*, is reimagined to play to the strengths and opportunities of digital printing. This digital asset is a starting point for custom engineered murals, textiles and glass film.

Hillside Theater, Custom Digital, Glass Film





Hillside Theater, Custom Digital, Wallcovering
Parquet 8529-052



Trellis Grid, Digital Studio, Wallcovering
Square Grid, Digital Studio, Wallcovering

Digital Studio

Inspired by the forms and configurations of Wright's stacking concrete blocks and the use of vertical structure, Designtex created a grouping of four modular patterns.

The patterns are available through the Designtex Digital Studio tool, allowing the designs to be custom colored and scaled for a multitude of possibilities. They can be applied to substrates for both walls and textiles as well as mixed and matched. This offering plays into Wright's desire to give all individuals the opportunity to live with customized design that complements their lives.





Window Grid, Digital Studio, Wallcovering, Upholstery

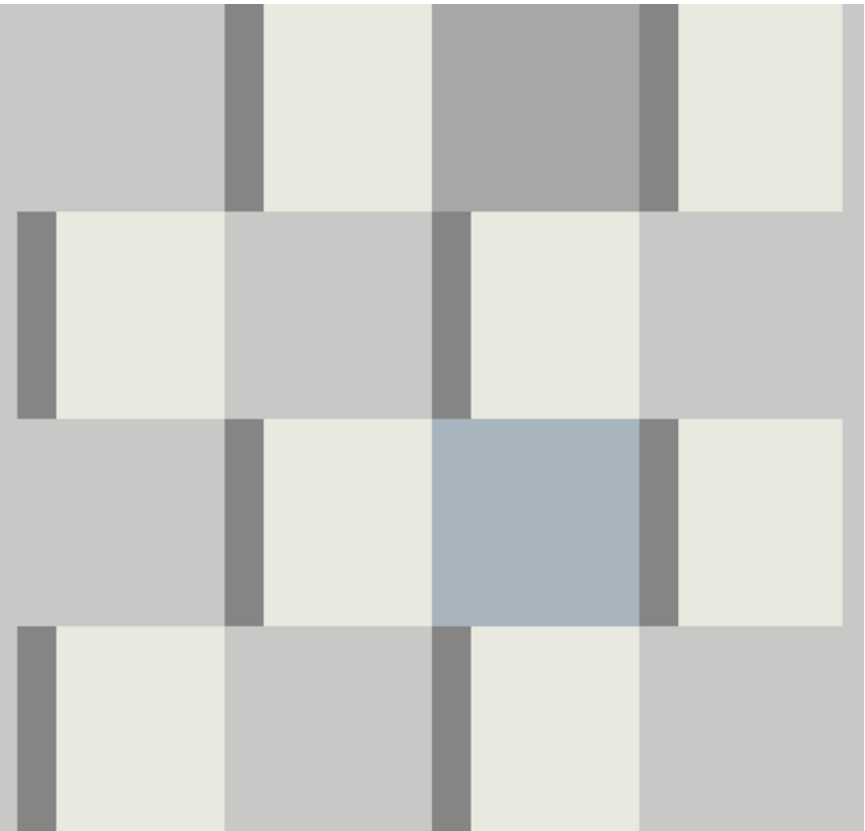
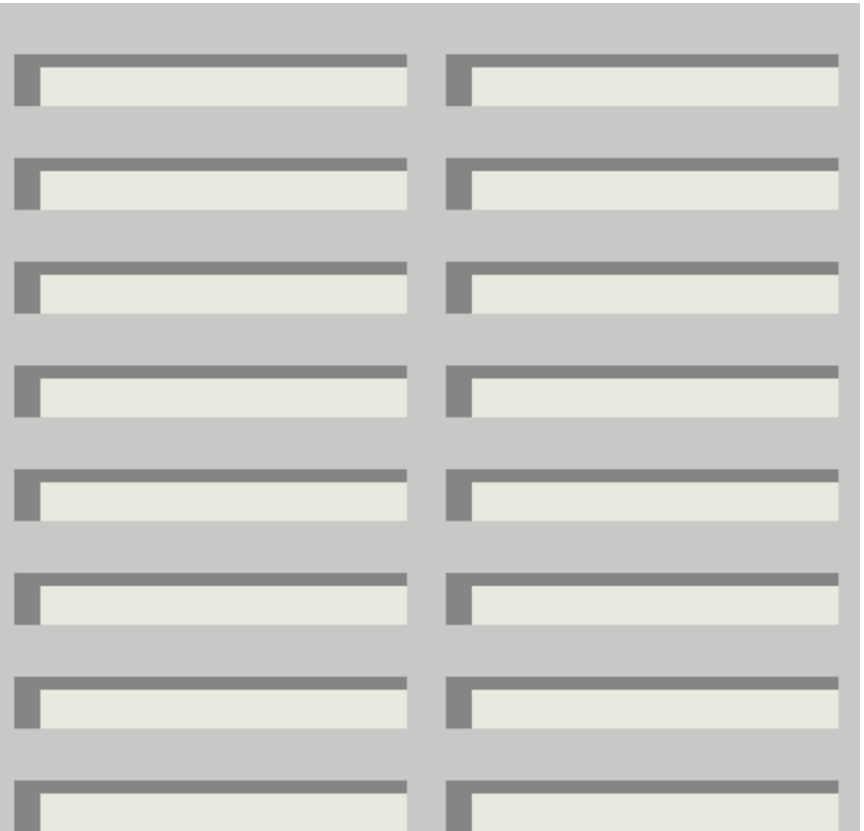
Digital Studio

Square Grid: A simple linear grid of squares, inspired by Wright’s use of the grid as an organizing system throughout his work.

Trellis Grid: A slender, trellis-like grid also reminiscent of the concrete framed window blocks that allow light to filter into Wright’s spaces.

Block Grid: A rhythmic pattern that distills the way Wright approached ornamentation, such as clerestories, screens and concrete ‘textile blocks’.

Window Grid: An abstract pattern that emulates the horizontally oriented facades of Wright’s architecture and geometric window designs that added touches of color.



Credits

Page 3: Big Picnic with Frank Lloyd Wright, Taliesin, Wisconsin, 1940
Photo by Pedro E. Guerrero. © The Estate of Pedro E. Guerrero. All rights reserved.

Page 8: Drawing by Vernon D. Swaback

Page 16, 19: Drawings by Eugene Masselink

Page 23: Recently restored Hillside Theater Curtain, Spring Green
Taliesin, Wisconsin

Page 25: *Drawing for Hillside Theatre Curtain* by Frank Lloyd Wright
(shown in background)

Page 33: Stacking Usonian Automatic blocks for the William and
Elizabeth Tracy House

Images courtesy of the Frank Lloyd Wright Foundation Archives
(The Museum of Modern Art | Avery Architectural & Fine Arts Library,
Columbia University, New York). All Rights Reserved.



DESIGNTex



[designtex.com](https://www.designtex.com)

Please reference our website for the most up-to-date information as product specifications may change.

Produced under license from the Frank Lloyd Wright Foundation. © FLWF