

Name

Pebble Melange

Designer

Suzanne Tick

Style No.

4108

Collection

Earthly Artifacts

Use

Indoor / Outdoor
Upholstery

Content

98% Polypropylene +
2% Polyester

Abrasion

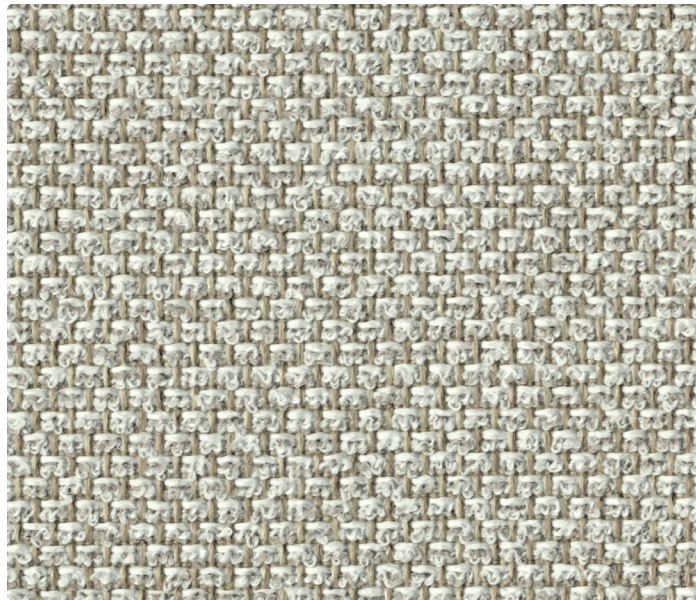
Wyzenbeek
70,000 double rubs

Special Characteristics

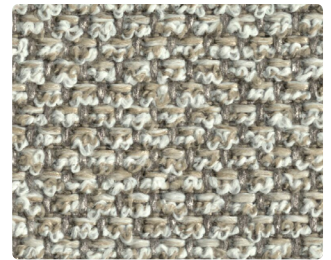
Bleach Cleanable

Environmental

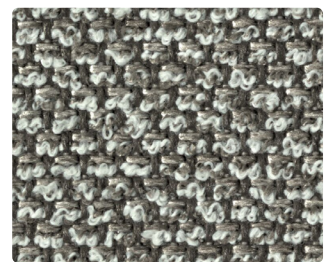
Chemical Finish Free
Heavy Metal Free
Oeko-Tex 100 Certified
REACH Regulation
Compliant



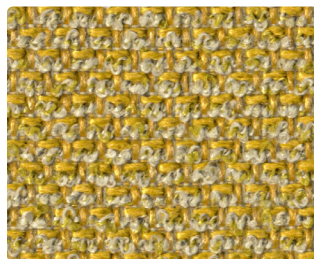
Esker 4108-01



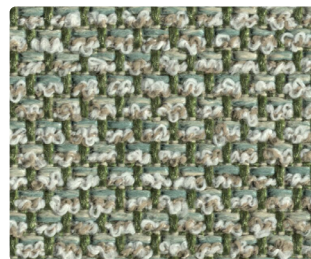
Earthen 4108-02



Pewter 4108-03



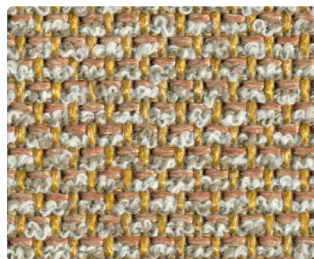
Meteor 4108-10



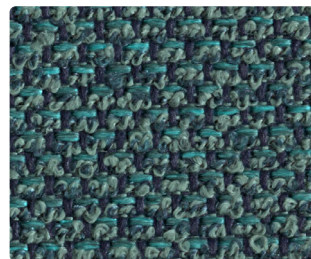
Estuary 4108-09



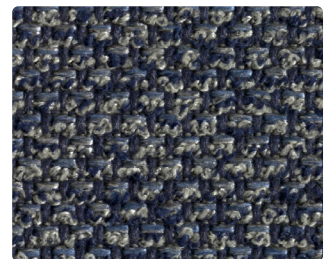
Tectonic 4108-04



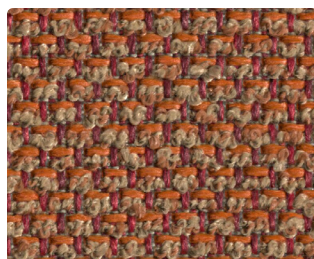
Barkhan 4108-11



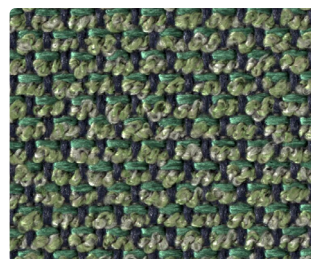
Palustrine 4108-06



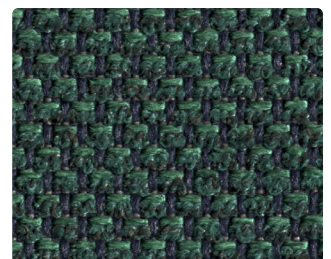
Geyser 4108-05



Lava 4108-12



Everglade 4108-08



Forest Marble 4108-07

Name

Pebble Melange

Style No.

4108

Specification

Use: Indoor / Outdoor Upholstery
Content: 98% Polypropylene + 2% Polyester
Weight: 24.45oz per linear yard
Width: 55"
Pattern Repeat: None
Directional: Yes

Finish

None

Performance

Abrasion: ASTM D4157 Wyzenbeek 70,000 double rubs
Breaking Strength: ISO 13934-1 Warp 580 lbf, Fill 400 lbf
Seam Slippage: ISO 13936-1 Warp >45 lbf, Fill >45 lbf
Colorfastness to Light: ISO 105-B02 Grade 7-8 at 1500 Hours
Colorfastness to Crocking: ISO 105-X12, Wet Class 4, Dry Class 4-5
Pilling: ISO 12945-2 (Martindale), Class 4-5

Acoustical Rating

Fabric Transparency 0.75, NRC 0.60 tested to ISO 10534-2 standards

Maintenance

W, Clean with a water-based cleaning agent. Do not use solvent products.
Bleach Cleanable: 9% (10:1 Ratio), wipe with water after solution

Flame Retardancy

Cal TB 117-2013

Environmental

Chemical Finish Free
Heavy Metal Free
Oeko-Tex 100 Certified
REACH Regulation Compliant

Origin

Italy

Dye lots may vary slightly from samples shown. Samples shown off the bolt.



Canada

877.705.LUUM
luumtextiles.ca

USA

877.705.LUUM
luumtextiles.com

International

919.464.2922
luumtextiles.com

cdn/us/int/01-2023

© Luum™ 2023, all rights reserved.

® ,™ Trademarks used under license by Luum™, Pebble Melange™

*Certification Marks owned by the Association for Contract Textiles, Inc.

U7-SC-305-4108