

Assembly Instructions

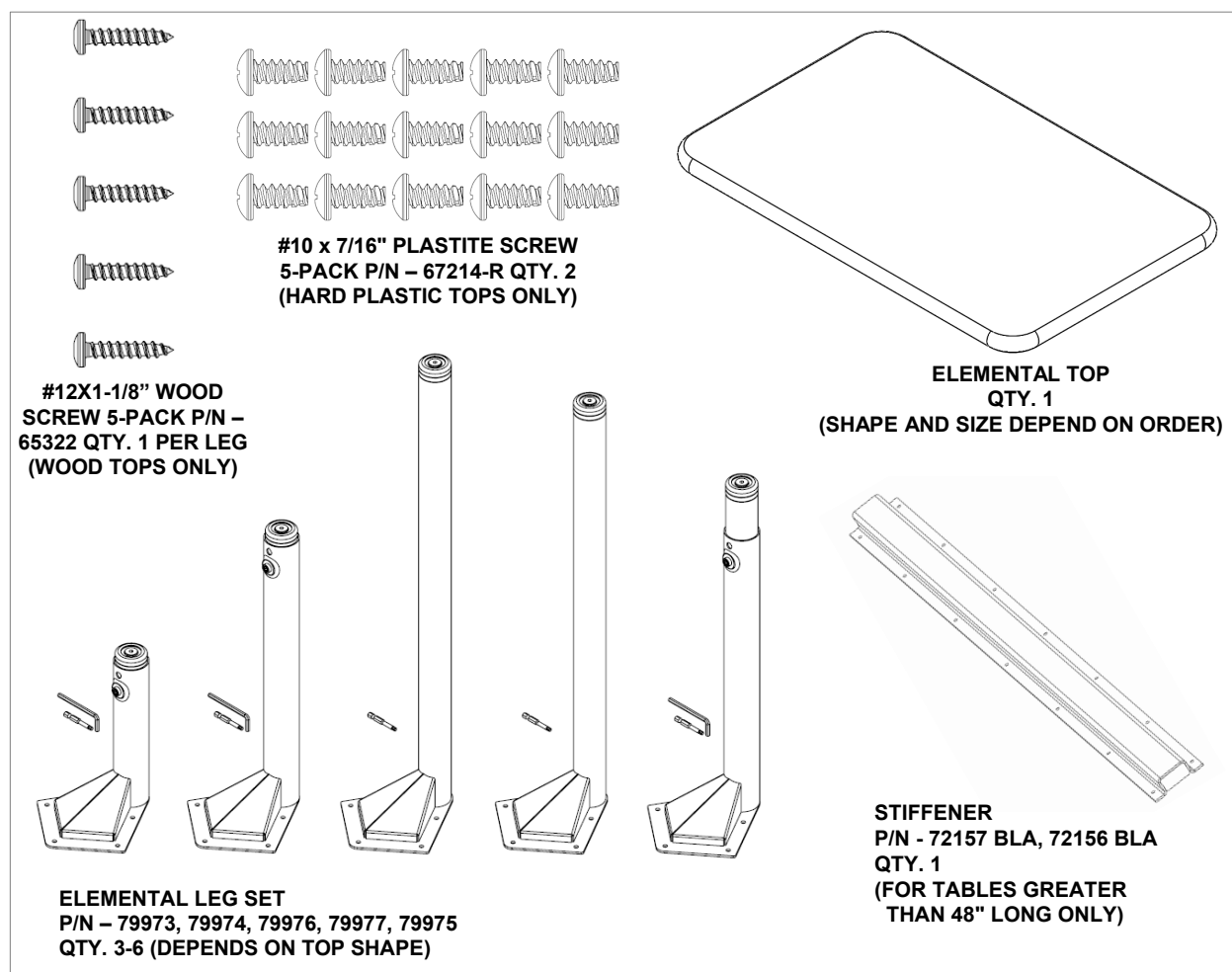
Elemental Tables



*Elemental Table available in numerous shapes and sizes. Picture does not necessarily represent parts received.

If you have damaged or missing components,
Please contact customer service at 1-800-328-1061

Hardware and Components

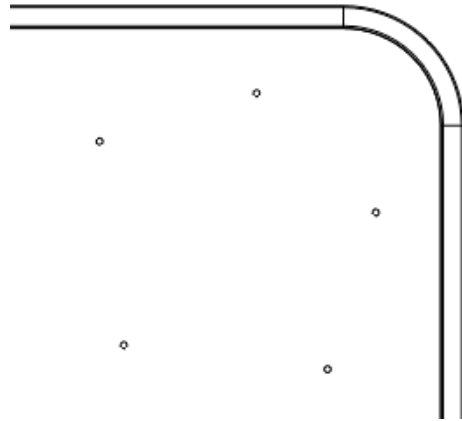


Special Notes:

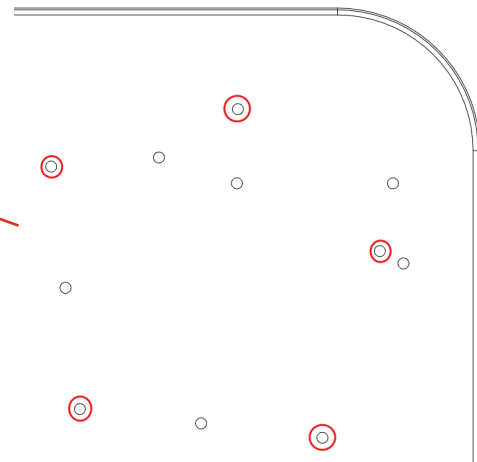
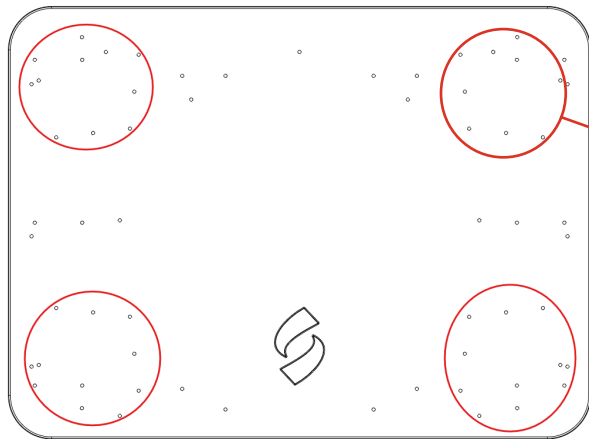
- Check that all components are accounted for and undamaged before assembling.
- Please assemble the product in a clean and dry area.
- For larger units you may need another person to help assemble the product.
- Clean the product with a mild cleaner and a damp cloth.

Assembly Instructions

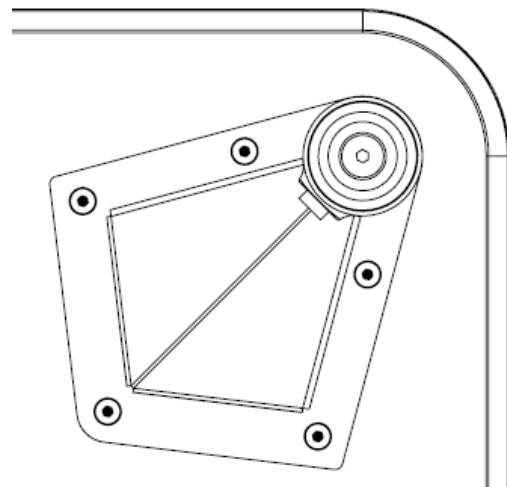
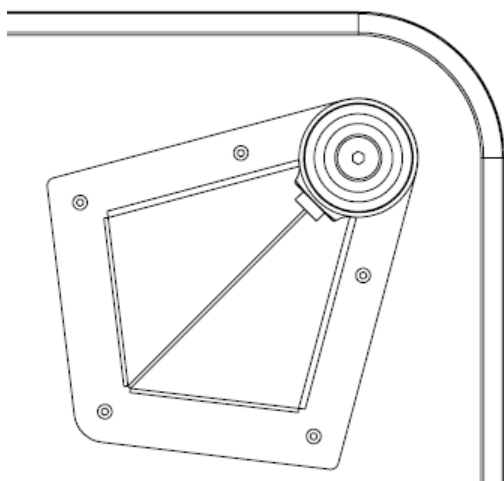
Step 1: Flip the top over and identify predrilled pattern.



Note: Hard plastic tops may have multiple hole patterns. Make sure to identify the correct hole pattern as shown

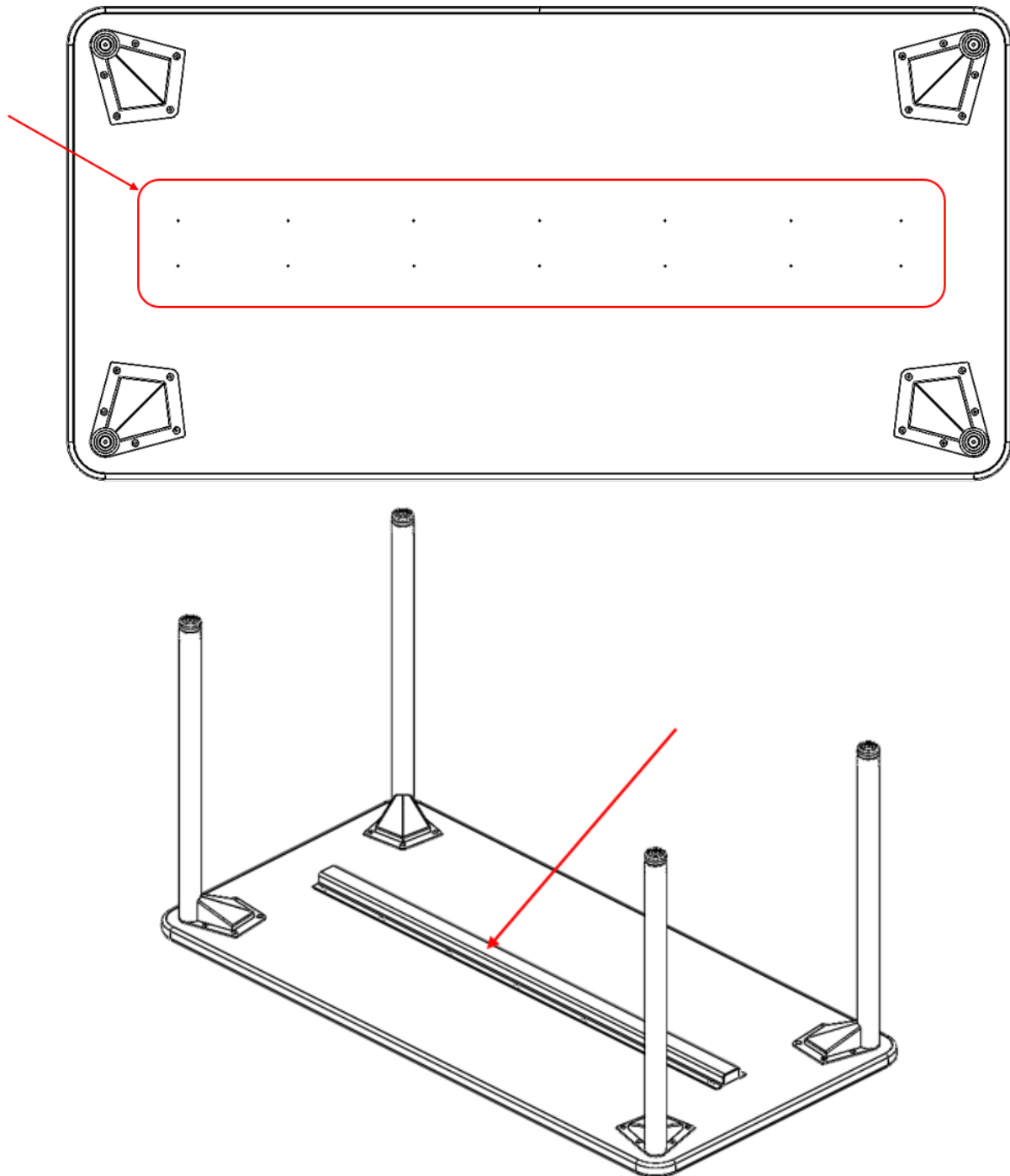


Step 2: Align table leg with pattern and install the corresponding screws. **Make sure to only use plastite screws on hard plastic tops and wood screws on wood tops.** Repeat for each leg.



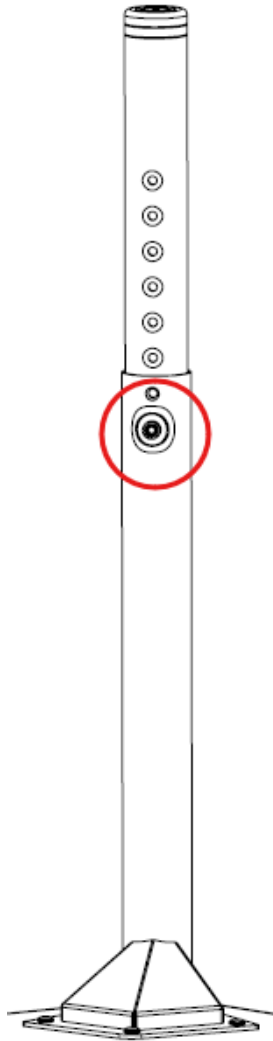
Assembly Instructions

Step 3: For rectangular tables greater than 48" long. Identify predrilled hole pattern along center of underside worksurface and install stiffener using provided wood screws.



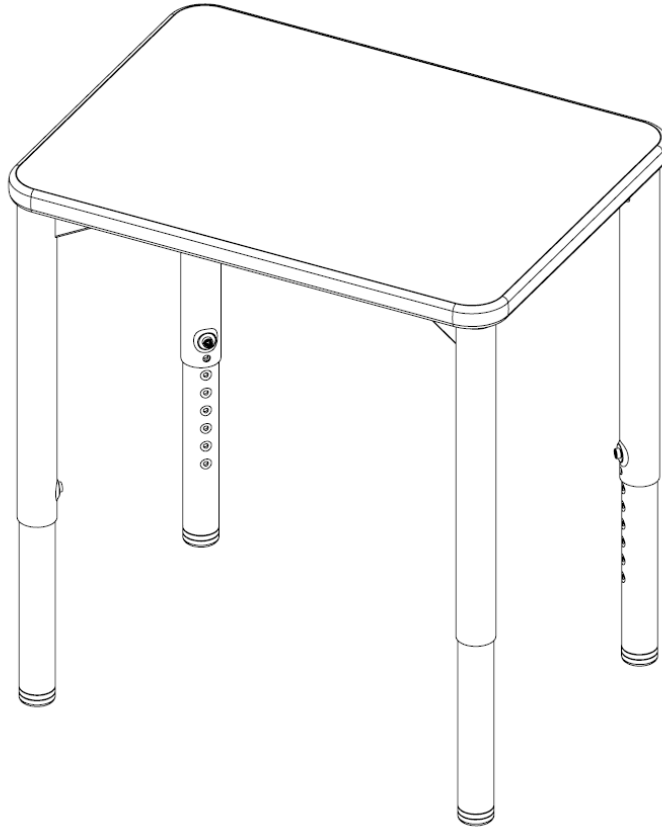
Assembly Instructions

Step 4: For adjustable height legs only. Adjust the leg height as needed by loosening the set screw in the leg (use the provided hex key to loosen). Tighten the set screws. Hand tighten, do not use power tool, to tighten set screw to ensure screw is correctly located in the insert hole.



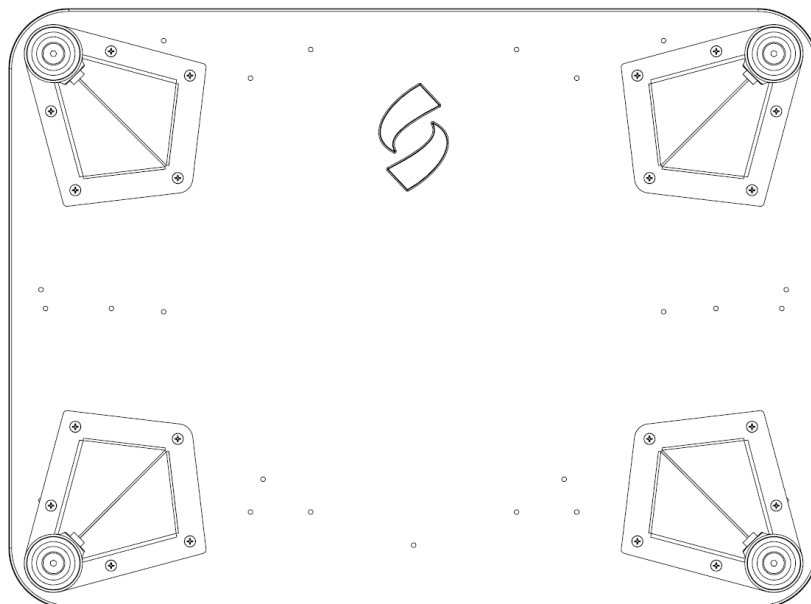
Assembly Instructions

Step 5: Flip the table back over.



Note: The Smith system logo is used to indentify the user side on hard plastic desks.

USER SIDE



DONE