



### OVERVIEW

The shape allows the 3-2-1 table to be arranged to fit the day's lesson plan. For a lecture or testing, 3-2-1 tables can be lined up in rows; for group work, the tables can be arranged in partial and full circles. Best for pre-k through grade 2 cooperative learning classrooms.

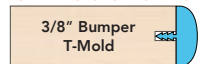
### MATERIALS

The work surface consists of a 45 lb density particle board core with a 0.030" high pressure laminated surface and a 0.020" melamine backer sheet. The edge of the work surface features a t-mold edge that is mechanically fastened to the underside of the work surface every 6 to 8 inches to assure a long lasting fit. 1 1/4" or 3/4" thick top.

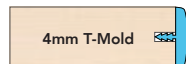
The ellipse legs are made out of 1" x 2" 14-gauge oval steel tubing which is protected with a durable powder coat finish that matches the color of the nylon cap. The legs are welded to a square brace and a plate for added surface contact and weight distribution. Includes 1" adjustable leveling glides with locking stops to provide stability on uneven floors.

### TOP AND EDGE OPTIONS

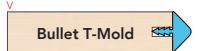
1 1/4" TOP W/ BUMPER T-MOLD  
NO LETTER TO FOLLOW MODEL NO.



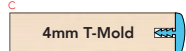
1 1/4" TOP W/ 4MM T-MOLD  
D



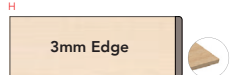
3/4" TOP W/ BULLET T-MOLD  
V



3/4" TOP W/ 4MM T-MOLD  
C



1 1/4" TOP W/ 3MM - 90° CORNERS  
H



1 1/4" TOP W/ 3MM - ROUND CORNERS  
F



3/4" TOP W/ 3MM - 90° CORNERS  
E

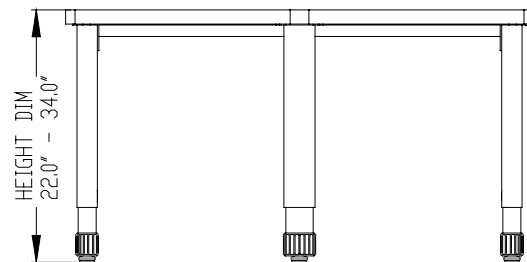
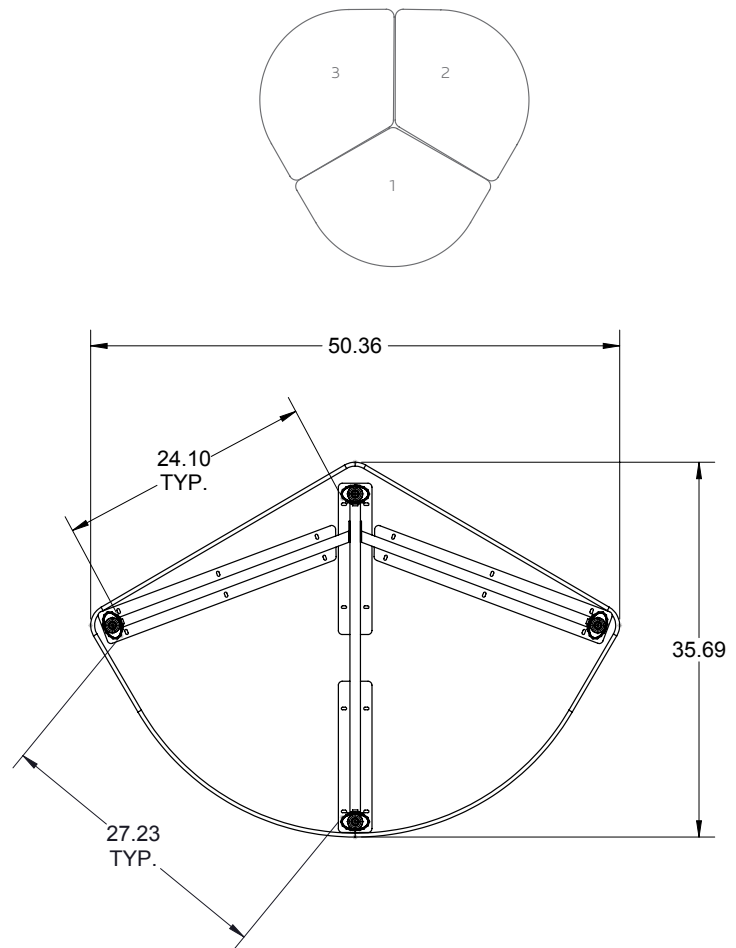


3/4" TOP W/ 3MM - ROUND CORNERS  
G



### DIMENSIONS

Model	Description	D"	W"	H"	WT
03011	Interchange 3-2-1 LS Activity Table	35	50	22-34	67



## STANDARD LAMINATE OPTIONS

Want to specify a different laminate?

No problem. If you have 20 or more tops of the same color -60 or -38 there is no upcharge. Have 20 or less? We can quote for you with the Wilsonart code and – finish style. We can specify other laminates – call to inquire and get a quote.



## SUGGESTED LAMINATE OPTIONS



## STANDARD EDGE COLOR OPTIONS



All 20 of the standard laminates are -60 finish, if you need to match a laminate from a previous year, please let us know on your order (example Pewter Mesh 4878-38, our standard is -60).

When the WilsonArt Laminate code includes a "Y", "K", "-12" "-78", "Aeon" etc, these are special laminates with an upcharge, even when it contains -38 or -60.

## EDGE COLOR OPTIONS WITH ADDITIONAL LEAD TIME



## LEG COLOR OPTIONS

