

# Assembly Instructions

## Silhouette Student Desks

### MODELS

01600 01653  
01602 01654  
01603 01655  
01620 01657  
01621 01658  
01622 01659  
01648 01670  
01649 01671  
01650

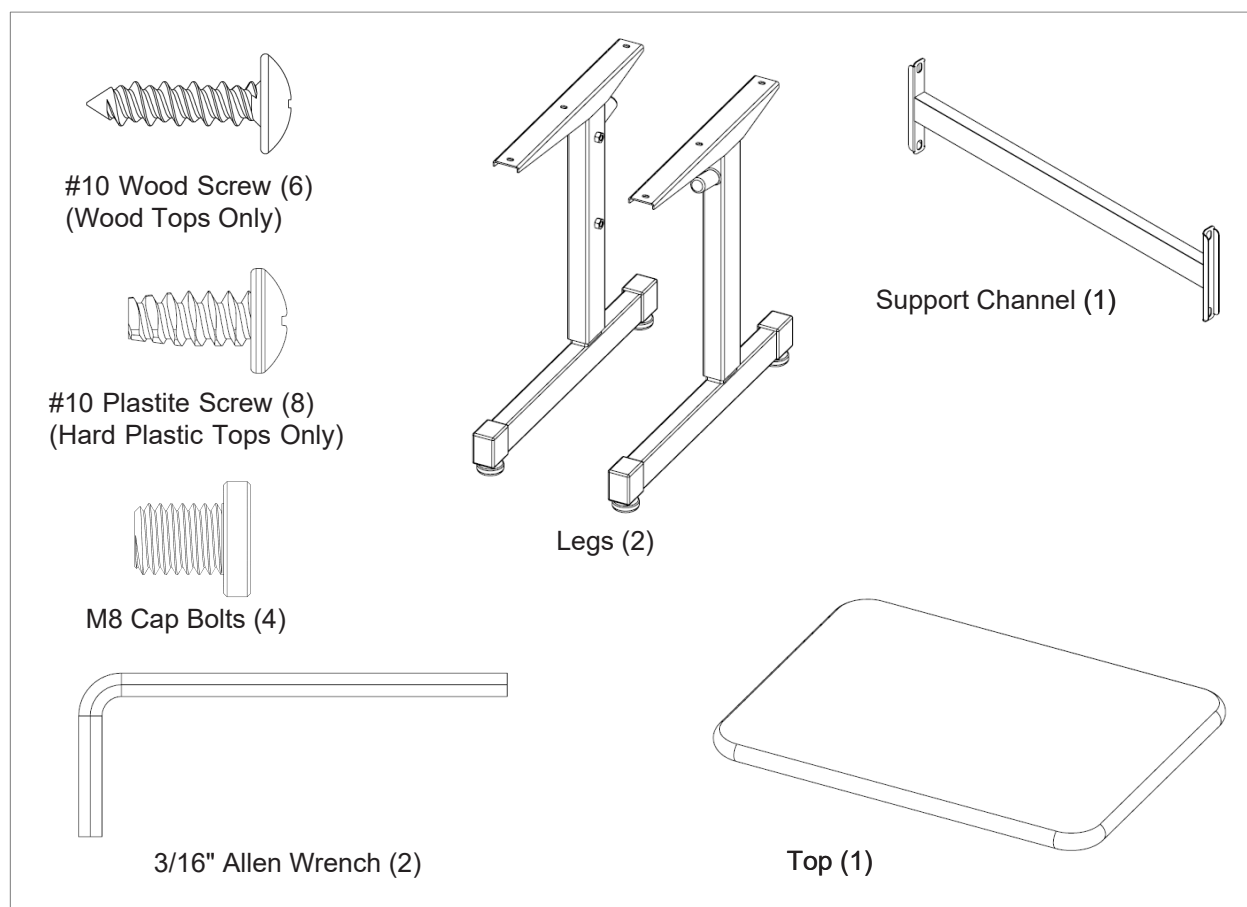


\*Picture does not necessarily represent parts received.



If you have damaged or missing components,  
Please contact customer service at 1-800-328-1061

# Hardware and Components

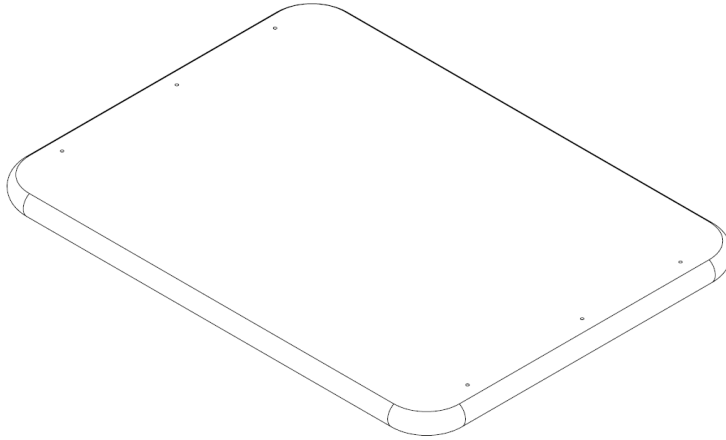


## Special Notes:

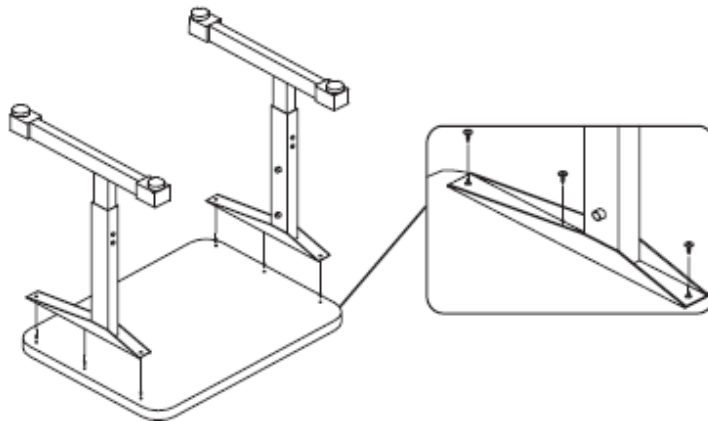
- Check that all components are accounted for and undamaged before assembling.
- Please assemble the product in a clean and dry area.
- For larger units you may need another person to help assemble the product.
- Clean the product with a mild cleaner and a damp cloth.

# Assembly Instructions

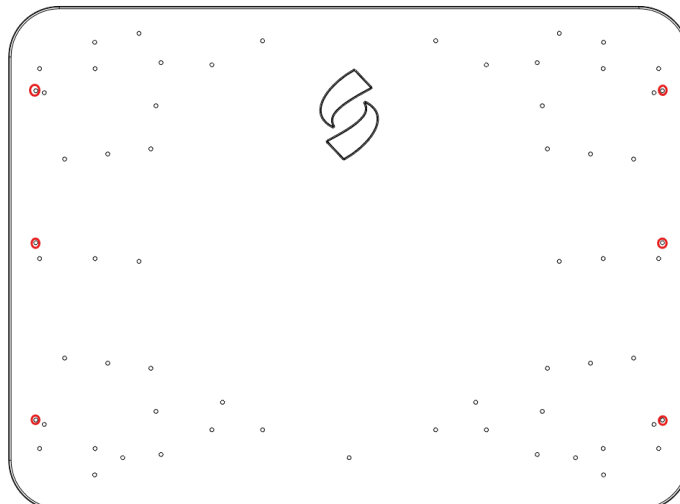
**Step 1:** Place top on a smooth, clean surface with the bottom facing up.



**Step 2:** Loosely attach legs with the corresponding #10 screws (6). **Make sure to only use plastite screws on hard plastic tops and wood screws on wood tops.**

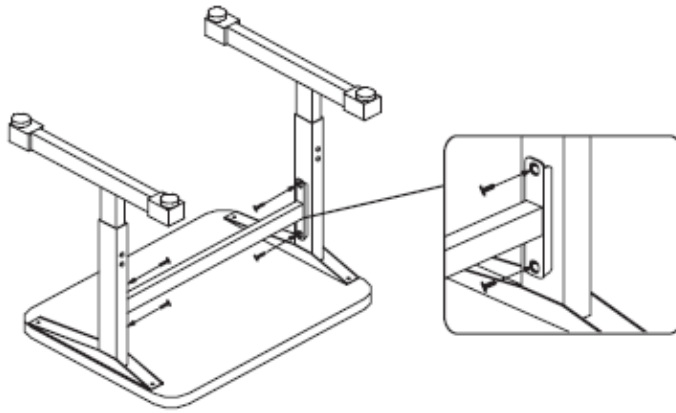


**Note:** Hard plastic tops may have multiple hole patterns. Make sure to identify the correct hole pattern as shown (01272PLASTIC model shown). Note that the Smith System logo always indicates the user side.



# Assembly Instructions

**Step 3:** Attach support channel to legs with the M8 cap screws (4) and Allen Wrench.



**Step 4:** Tighten the #10 screws into the top. Adjust table to desired height using the supplied Allen Wrench (if adjustable). Carefully flip the desk over, desk is now ready for use.

