

Specifications  
Tek-Wall 1003  
300089

**maharam**

**Application**

Upholstered Walls, Walls

**Characteristics**

Content: 62% Solution-Dyed Polyolefin, 38% Polyester

Finish: Stain Repellent

Backing: Acrylic

Width: 56" (142cm)

Bolt Size: 40 yards (37 m)

Weight: 17.5 oz/ly (500 gr/lm)

Traffic: High Traffic

Country of Origin: USA

Note on Mold: Intended for use in buildings designed and maintained to avoid moisture on or within walls.

Application must conform to current Installation Guidelines included in each shipment or available at maharam.com.

**Price**

Contact your sales representative for pricing.

**Maintenance**

W/S/B-Clean with water-based cleanser; mild, water-free dry cleaning solvent, or diluted household bleach.



**Testing**

Acoustics: ASTM C423, 0.75 NRC

Flammability: AS/NZS 3837 Adhered

ASTM E84 Adhered

ASTM E84 Unadhered

CAN ULC S102 Adhered

CAN ULC S102 Unadhered

EN 13501 Adhered\*

EN 13501 Unadhered\*

GB 8624 Adhered\*

GB 8624 Unadhered\*

ISO 5660 Adhered

\*passes with additional treatment

Lightfastness: AATCC 16.3, 200+ hours



Specifications  
Tek-Wall 1003  
300089

**Environmental**

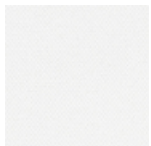
Greenguard Gold Certified  
REACH Compliant  
FR Free

**Warranty**

10 years: Walls  
3 years: Upholstered Walls.

© 2022 Maharam

Complete product information at [maharam.com](http://maharam.com)  
800.645.3943



001 Subtle



002 Snowstorm



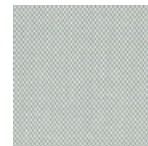
003 Clarity



004 Drumbeat



005 Centerpiece



006 Flowerpot



007 Boscage



008 Wildland



009 Bluestem



010 Watercraft



011 Tower



012 Archipelago



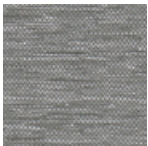
013 Lentic



014 Elemental



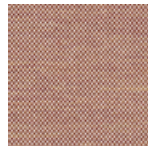
015 Moonset



016 Legend



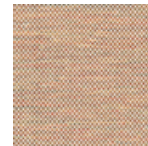
017 Percussion



018 Viola



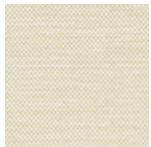
019 Crustacean



020 Amphora



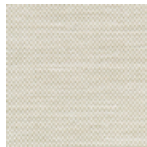
021 Nutshell



022 Verve



023 Mellifluous



024 Snickerdoodle



025 Riddle