

Vitality Tones

Collection	Vitality	
Style Number	4375V	
Welding Rod Style Number	184CA	
Construction	Commercial Homogeneous Sheet	
Finish	ExoGuard®	
	U.S.	Metric
Overall Thickness	0.079 in	2 mm
Installation Type	Dry Back	
Installation	Direct Glue	
Recommended Adhesive	S150-95, 4200 1 Gallon, 4200 4 Gallon, 2200 or 4151	

Packaging

Actual Roll Size	6.56 ft w x 65.62 ft l	2.00 m w x 20.00 m l
Area per Roll	47.84 sy/roll	40 sq m/roll
Weight per Roll	286.6 lbs	130 kg



Recommended Installation Method



Reverse

Coordinating Products

Sheet: Vitality Sheet, Vitality Hues

Performance + Testing

Static Load (ASTM F970)	Passes (Modified), *2000 lbs	*This test is intended to compare relative properties of different styles and constructions. Results are based on a laboratory test and used for comparative purposes - real life load limit may vary.
Residual Indentation (ASTM F1914)	Passes	
Flexibility (ASTM F137)	Passes	
Resistance to Heat (ASTM F1514)	Passes	
Resistance to Light (ASTM F1515)	Passes	
Resistance to Chemicals (ASTM F925)	Passes	
Radiant Panel (ASTM E648)	Passes, Class I	
Coefficient of Friction (ASTM D2047, Slip Resistance)	≥0.5, meets the recommended static coefficient of friction for ADA walking surfaces	

Test Reports may be included or listed by the manufacturing/inventory style number as opposed to the noted selling style number.

Warranties

[15 Year Commercial Limited Warranty](#)

[Commercial 15 Year Underbed Bond Warranty](#)

Diversity & Inclusion

We promote supplier participation that is reflective of Shaw Industries' diverse customer base and local community. We believe having a strong Supplier Diversity Program is strategic for bringing more innovation to our businesses and opening new markets for growth.

Material Health & Environmental Certifications

Health & Wellbeing

Material Ingredient Transparency
Indoor Air Quality

Health Product Declaration (HPD) | 1000 ppm Disclosure
FloorScore® | Certified

Climate Impact

Environmental Product Declaration (EPD)

Embodied Carbon (Cradle to Gate)
Life-Cycle Carbon Emissions
Total Recycled Content

3rd Party Certified in Accordance with ISO 14025, EN 15804, & ISO 21930:2017
7.48 Kg CO₂/M²
Low Embodied Carbon
0% (Pre-Consumer 0% | Post-Consumer 0%)

Global Product Assessment

Country of Origin | Imported

WELL V2 Contribution Credit

X01 Fundamental Material Precautions
Part 1: (C): Restrict Asbestos Precondition

X08 Hazardous Material Reduction
Part 1: Limit Hazardous Materials Optimization

X10 Volatile Compound Reduction
Part 1 (A): Manage Volatile Organic Compounds (VOCs) Optimization

X10 Volatile Compound Reduction
Part 2: Manage Semi-Volatile Organic Compounds (SVOCs) Optimization

X11 Long Term Emissions Control
Part 2: Flooring Optimization

X14 Material Transparency
Part 1: Promote Ingredient Disclosure Optimization

Absence of Asbestos

Absence of Heavy Metals

Absence of Halogenated Flame Retardants

Ortho-Phthalates

FloorScore Certified

Health Product Declaration (HPD) | 1000 Ppm Disclosure

Leed v4 Contribution Credits

MR Credit: Building Product Disclosure and Optimization
Material Ingredients - Option 1: Material Ingredient Reporting

MR Credit: Building Product Disclosure and Optimization
Environmental Product Declarations - Option 1: Environmental Product Declaration (EPD)

EQ Credit: Low Emitting Materials
Option 1: Product Category Calculations

[Installation Guidelines](#)

[Maintenance Guidelines](#)

Health Product Declaration (HPD) | 1000 Ppm Disclosure

3rd Party Certified in Accordance with ISO 14025, EN 15804, & ISO 21930:2017

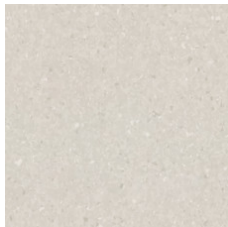
FloorScore Certified

Please visit www.shawcontract.com for the most current warranty information. Specifications are subject to nominal manufacturing variance. Material supply and/or manufacturing processes may necessitate changes without notice.

This product is an exclusive design and may not be duplicated in any manner. Use of this design in the creation of another product design is also strictly prohibited.

Visit shawcontract.com/testing for more information.

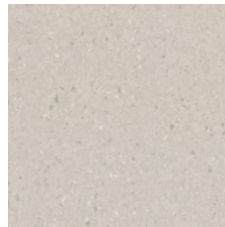
Available Colorways



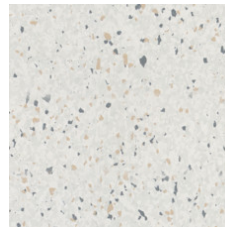
Root 00100
Weldrod 0100D



Brawn 00104
Weldrod 0104D



Cheer 00105
Weldrod 0105D



Pep Up 00111
Weldrod 0111D



Sing 00120
Weldrod 0120D



Humor 00130
Weldrod 00130



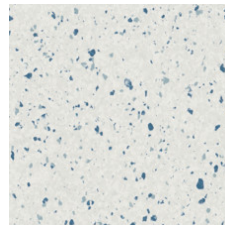
Ginger 00144
Weldrod 0144D



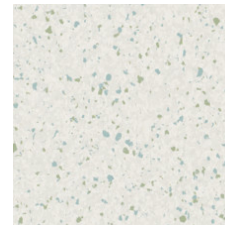
Play 00163
Weldrod 00163



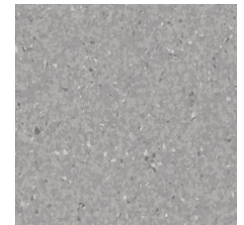
Mettle 00240
Weldrod 00240




Amp Up 00485
Weldrod 00485



Jazz Up 00515
Weldrod 0515D



Might 00520
Weldrod 0520D

 **Quick Ship**

