

Basstones Sheet

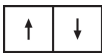
Style Number	0301V	
Welding Rod Style Number	353VS	
Construction	Commercial Heterogeneous Sheet With Fiberglass	
Class / ASTM F1303	Type I, Grade 1, Class B	
Backing Class	4-ply Fused Backing System	
Finish	ExoGuard®	
	U.S.	Metric
Wear Layer Thickness	20 mil (0.02 in)	0.51 mm
Overall Thickness	0.087 in	2.2 mm
Installation	Direct Glue	
Recommended Adhesive	S150-95, 4200 1 Gallon, 4200 4 Gallon, 2200 or 4151	

Packaging

Actual Roll Size	6.00 ft w x 75.00 ft l	1.83 m w x 22.86 m l
Area per Roll	50 sy/roll	41.81 sq m/roll
Weight per Roll	267.5 lbs	121.34 kg



Recommended Installation Method



Reverse

Performance + Testing

Static Load (ASTM F970)	Passes (Modified), *1500 lbs	*This test is intended to compare relative properties of different styles and constructions. Results are based on a laboratory test and used for comparative purposes - real life load limit may vary.
Residual Indentation (ASTM F1914)	Passes	
Flexibility (ASTM F137)	Passes	
Resistance to Heat (ASTM F1514)	Passes	
Resistance to Light (ASTM F1515)	Passes	
Resistance to Chemicals (ASTM F925)	Passes	
Smoke Density (ASTM E662, Flaming Mode)	Passes	
Radiant Panel (ASTM E648)	Passes, Class I	
Coefficient of Friction (ASTM D2047, Slip Resistance)	≥0.5, meets the recommended static coefficient of friction for ADA walking surfaces	

Test Reports may be included or listed by the manufacturing/inventory style number as opposed to the noted selling style number.

Warranties

[15 Year Commercial Limited Warranty](#)

[Commercial 15 Year Underbed Bond Warranty](#)

Diversity & Inclusion

We promote supplier participation that is reflective of Shaw Industries' diverse customer base and local community. We believe having a strong Supplier Diversity Program is strategic for bringing more innovation to our businesses and opening new markets for growth.

Material Health & Environmental Certifications

Health & Wellbeing

Material Ingredient Transparency
Indoor Air Quality

Health Product Declaration (HPD) | 1000 ppm Disclosure
FloorScore® | Certified

Climate Impact

Environmental Product Declaration (EPD)

Embodied Carbon (Cradle to Gate)
Total Recycled Content

3rd Party Certified in Accordance with ISO 14025, EN 15804, & ISO 21930:2017
9.4 Kg CO₂/M²
0% (Pre-Consumer 0% | Post-Consumer 0%)

Global Product Assessment

GSA | Approved
CE Marking (EN 14041) | 3rd Party Certified
Country of Origin | Imported

WELL V2 Contribution Credit

X01 Fundamental Material Precautions
Part 1: (C): Restrict Asbestos Precondition

X08 Hazardous Material Reduction
Part 1: Limit Hazardous Materials Optimization

X10 Volatile Compound Reduction
Part 1 (A): Manage Volatile Organic Compounds (VOCs) Optimization

X10 Volatile Compound Reduction
Part 2: Manage Semi-Volatile Organic Compounds (SVOCs) Optimization

X11 Long Term Emissions Control
Part 2: Flooring Optimization

X14 Material Transparency
Part 1: Promote Ingredient Disclosure Optimization

Absence of Asbestos

Absence of Heavy Metals

Absence of Halogenated Flame Retardants

Ortho-Phthalates

FloorScore Certified

Health Product Declaration (HPD) | 1000 Ppm Disclosure

Leed v4 Contribution Credits

MR Credit: Building Product Disclosure and Optimization
Material Ingredients - Option 1: Material Ingredient Reporting

MR Credit: Building Product Disclosure and Optimization
Environmental Product Declarations - Option 1: Environmental Product Declaration (EPD)

EQ Credit: Low Emitting Materials
Option 1: Product Category Calculations

[Installation Guidelines](#)

[Maintenance Guidelines](#)

Health Product Declaration (HPD) | 1000 Ppm Disclosure

3rd Party Certified in Accordance with ISO 14025, EN 15804, & ISO 21930:2017

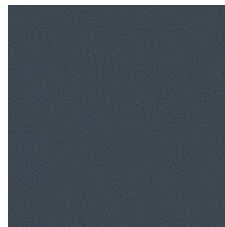
FloorScore Certified

Please visit www.shawcontract.com for the most current warranty information. Specifications are subject to nominal manufacturing variance. Material supply and/or manufacturing processes may necessitate changes without notice.

This product is an exclusive design and may not be duplicated in any manner. Use of this design in the creation of another product design is also strictly prohibited.

Visit shawcontract.com/testing for more information.

Available Colorways

					
Flaxen Vibe 00100 Weldrod 02001	Ecru Cadence 00110 Weldrod 02001	Desert Sound 00120 Weldrod 02027	Polished Brass 00140 Weldrod 09633	Set Off 00200 Weldrod 02002	Camel Accent 00210 Weldrod 02025
					
Coastal Tempo 00300 Weldrod 06303	Underscore 00310 Weldrod 02004	Stanza Sage 00320 Weldrod 02005	Tonal Vine 00330 Weldrod 06303	Elevate 00340 Weldrod 02006	Amplitude 00350 Weldrod 02007
					
Aqua Tone 00360 Weldrod 02008	Graytone Fade 00410 Weldrod 02009	High Fidelity 00420 Weldrod 02010	Mineral Score 00430 Weldrod 02011	Pearly Melody 00500 Weldrod 01203	Pewter Serenade 00530 Weldrod 05244



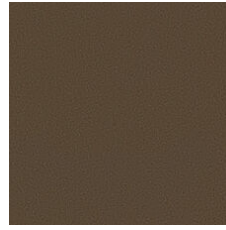
Ashen Interval 00540
Weldrod 02014



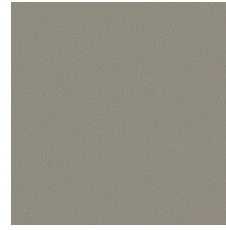
Boost 00600
Weldrod 02017



Adobe Verse 00610
Weldrod 02018



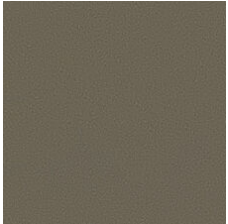
Chorale Clay 00630
Weldrod 01823



Khaki Cue 00700
Weldrod 02019



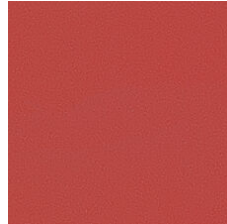
Neutral Intro 00710
Weldrod 02020



Gilded Mink 00750
Weldrod 02026



Coffee Echo 00760
Weldrod 05230



Amplify 00800
Weldrod 02022



Emphasize 00900
Weldrod 02024

