

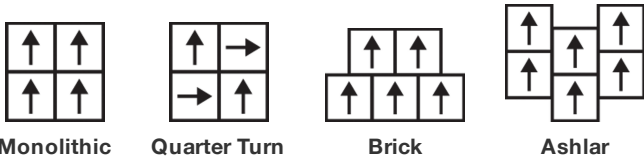
Sculpt Tile

Product Type	Carpet Tile
Collection	Rewoven
Style Number	5T007
Construction	Multi-Level Pattern Cut/Loop
Fiber	Ecosolution Q100® Nylon
Dye Method	100% Solution Dyed
Primary Backing	Synthetic
Secondary Backing	Ecworx® Tile
Protective Treatments	SSP® Shaw Soil Protection
Recommended Adhesive	LokDots, 3000 4 Gallon, 3000 1 Gallon, 4252, 4151, 5000 1 Gallon, LokWorx Tabs, 3800 or 5000 4 Gallon

	u.s.	metric
Product Size	24 in x 24 in	61 cm x 61 cm
Area per Carton	48 ft²	4.46 m²
Pieces per Carton	12 pcs	
Gauge	1/10 in	39.4 per 10 cm
Stitches	13.0 per in	51.0 per 10 cm
Finished Pile Thickness	0.129 in	3.28 mm
Average Density	5581 oz/yd³	0.206 g/cm³
Kilotex		11.84
Total Thickness	0.249 in	6.32 mm
Tufted Weight	20 oz/yd²	678.1 g/m²



Recommended Installation Method



Performance + Testing

Radiant Panel	Class I
NBS Smoke	Less Than 450
Electrostatic Propensity	Less Than 3.5 kv
CRI Green Label Plus (GLP)	GLP9968
Pill Test	Pass*
ADA Compliance	>0.6, meets the recommended static coefficient of friction for ADA walking surfaces and accessible routes***

Test Reports may be included or listed by the manufacturing/inventory style number as opposed to the noted selling style number.

Warranties

Lifetime Commercial Limited Warranty

Coordinating Products

Carpet Tile: **Sculpt Loop Tile**  
Broadloom: **Layer, Dimension, Contour, Outline**

Diversity & Inclusion

We promote supplier participation that is reflective of Shaw Industries' diverse customer base and local community. We believe having a strong Supplier Diversity Program is strategic for bringing more innovation to our businesses and opening new markets for growth.

Material Health & Environmental Certifications

Certifications below apply exclusively to the carpet tile rug itself and not the LokWorx Tabs adhesive

Health & Wellbeing

Material Ingredient Transparency	<b>Cradle to Cradle Certified®   Silver Level (Version 4.0)</b> <b>Health Product Declaration (HPD)   1,000 ppm Disclosure</b> <b>Living Building Challenge (LBC)   Free of Red List Chemicals</b> <b>Declare   LBC Compliant</b> <b>NSF 140   Gold</b> <b>CRI Green Label Plus (GLP)   GLP9968</b>
Indoor Air Quality	
Climate Impact	
Environmental Product Declaration (EPD)	<b>3rd Party Certified in Accordance with ISO14044, ISO14025 &amp; EN15804</b>
Embodied Carbon (Cradle to Gate)	<b>3.75 kg CO<sub>2</sub>/m<sup>2</sup></b>
Life-Cycle Carbon Emissions	<b>Carbon Neutral</b>
Total Recycled Content	<b>57% (Pre-Consumer 57%   Post-Consumer 0%)</b>
Product Packaging	<b>100% Recyclable</b>
Global Product Assessment	<b>Singapore Green Label   Certified</b> <b>GSA   Approved</b> <b>CE Marking (EN 14041)   3rd Party Certified</b> <b>Environmental Guarantee*   Re[turn] Reclamation Program*   Through Our Environmental Guarantee, Shaw Pledges to Transport And Recycle Any Ecoworx Carpet.</b> <b>Country of Origin**   USA</b>

WELL V2 Contribution Credit

X08 Hazardous Material Reduction Part 1: Limit Hazardous Materials Optimization	<b>C2C Silver Level (Version 4.0)</b>
X10 Volatile Compound Reduction Part 1 (A): Manage Volatile Organic Compounds (VOCs) Optimization	<b>C2C Silver Level (Version 4.0)</b>
X11 Long Term Emissions Control Part 2: Flooring Optimization	<b>Green Label Plus Certification: GLP9968</b>
X13 Enhanced Material Precaution Part 1: Select Optimized Materials Optimization	<b>C2C Silver Level (Version 4.0)</b>
X14 Material Transparency Part 1: Promote Ingredient Disclosure Optimization	<b>C2C Silver Level (Version 4.0)</b>

## Leed v4 Contribution Credits

MR Credit: Building Product Disclosure and Optimization  
Environmental Product Declarations - Option 1: Environmental Product Declaration (EPD)

MR Credit: Building Product Disclosure and Optimization  
Material Ingredients - Option 1: Material Ingredient Reporting

MR Credit: Building Product Disclosure and Optimization  
Material Ingredients - Option 2: Material Ingredient Optimization

MR Credit: Building Product Disclosure and Optimization  
Sourcing of Raw Materials - Option 2: Leadership Extraction Practices

EQ Credit: Low Emitting Materials  
Option 1: Product Category Calculations

MR Credit: Interiors Life-Cycle Impact Reduction  
Option 3: Design for Flexibility

**3rd Party Certified in Accordance with ISO 14044, ISO 14025 & EN15804**

**C2C Silver Level (Version 4.0) or HPD (Version 2.1)**

**C2C Silver Level (Version 4.0)**

**Environmental Guarantee: Re[turn] Reclamation Program\* | Through Our Environmental Guarantee, Shaw Pledges to Transport And Recycle Any Ecoworx Carpet.**

**Green Label Plus Certification: GLP9968**

**Ecoworx Tile with Lokdots Installation System**

## Available Colorways



Bisque 83111  
LRV 17.7 | L\* 49.08



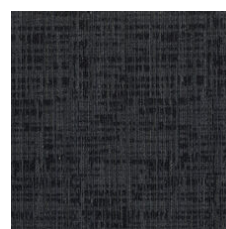
Cork 83170  
LRV 19.5 | L\* 51.25



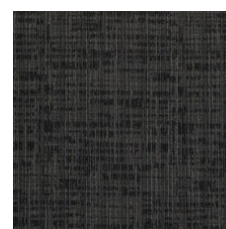
Nuance 83314  
LRV 6.7 | L\* 31.12



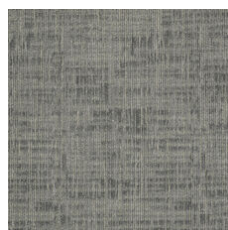
Swept 83322  
LRV 8.3 | L\* 34.65



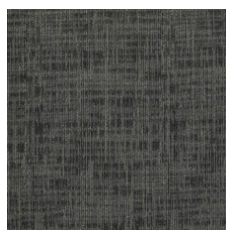
Night 83496  
LRV 3 | L\* 19.98



Underground 83505  
LRV 3.7 | L\* 22.71



Zinc 83515  
LRV 14.4 | L\* 44.73



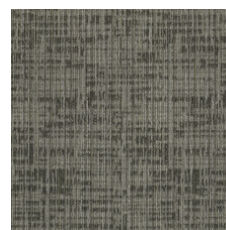
Carbon 83585  
LRV 6 | L\* 29.5



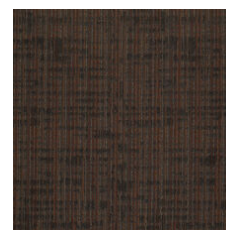
Canyon 83750  
LRV 4.5 | L\* 25.35



Suede 83755  
LRV 12.3 | L\* 41.69



Clay 83761  
LRV 10.6 | L\* 38.83



Brazen 83803  
LRV 3.8 | L\* 23.05

## Additional Information

\* To learn more about the recyclability of our products and our re[TURN], please visit [shawcontract.com/sustainability](https://shawcontract.com/sustainability).

\*\*Meets or exceeds all local and national regulations in country of manufacture.

\*\*\*This carpet is manufactured to be ADA compliant, but to be fully ADA compliant, the end-user must ensure the carpet is adhered to the floor and installed as outlined in the ADA standards.

[Installation Guidelines](#)

[Maintenance Guidelines](#)

Specifications are subject to nominal manufacturing variance. Material supply and/or manufacturing processes may necessitate changes without notice.

This product is an exclusive design and may not be duplicated in any manner. Use of this design in the creation of another product design is also strictly prohibited.

Visit [shawcontract.com/testing](https://shawcontract.com/testing) for more information.

