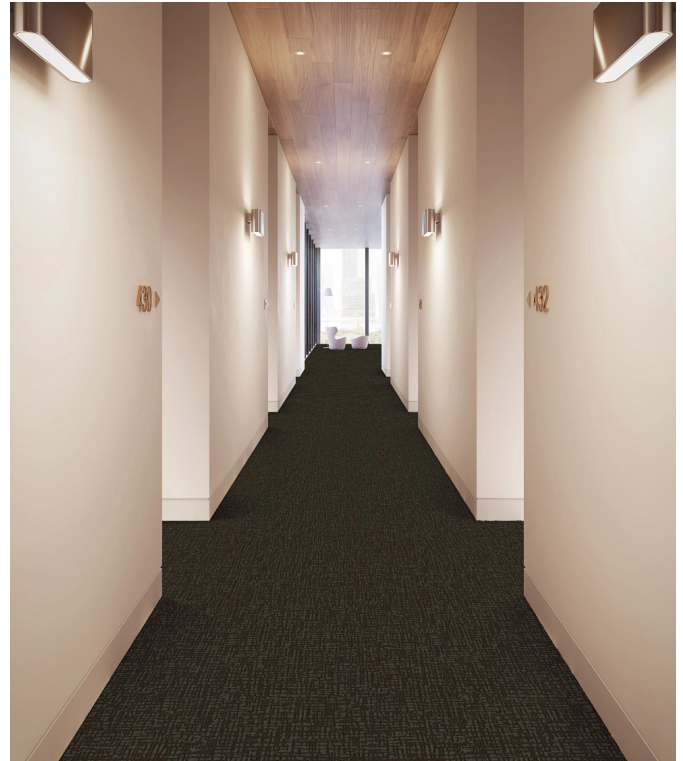


Tet3c

Product Type	Broadloom	
Collection	Timeless Essentials	
Style Number	TET3C	
Construction	Multi-Level Pattern Cut/Loop	
Fiber	Ecosolution Q® Nylon	
Dye Method	100% Solution Dyed	
Primary Backing	Synthetic	
Secondary Backing	Ultraloc®	
Recommended Adhesive	1000 or 3800	
	U.S.	metric
Product Size	12 ft	3.66 m
Gauge	1/10 in	39.4 per 10 cm
Stitches	10.0 per in	39.0 per 10 cm
Finished Pile Thickness	0.130 in	3.3 mm
Average Density	8862 oz/yd³	0.328 g/cm³
Total Thickness	0.321 in	8.15 mm
Tufted Weight	32 oz/yd²	1085 g/m²
Installation Pattern Repeat	36"X36.8"	91.44 cm X 93.47 cm



Recommended Installation Method

Direct Glue, Double Glue, Stretch-In

Performance + Testing

Pill Test	Pass
Radiant Panel	Class I
NBS Smoke	Less Than 450
Electrostatic Propensity	Less Than 3.5 kv
CRI Green Label Plus (GLP)	GLP2271
ADA Compliance	>0.6, meets the recommended static coefficient of friction for ADA walking surfaces and accessible routes***

Test Reports may be included or listed by the manufacturing/inventory style number as opposed to the noted selling style number.

Warranties

[Lifetime Commercial Limited Warranty](#)

Diversity & Inclusion

We promote supplier participation that is reflective of Shaw Industries' diverse customer base and local community. We believe having a strong Supplier Diversity Program is strategic for bringing more innovation to our businesses and opening new markets for growth.

Coordinating Products

Broadloom: **Tet1a, Tet1b, Tet1c, Tet1d, Tet1e, Tet1f, Tet2a, Tet2b, Tet2c, Tet2d, Tet2e, Tet2f, Tet3a, Tet3b, Tet3d, Tet3e, Tet3f, Tet4a, Tet4b, Tet4c, Tet4d, Tet4e, Tet4f**

Material Health & Environmental Certifications

Health & Wellbeing	
Material Ingredient Transparency	Cradle to Cradle Certified® Silver Level (Version 3.1) Health Product Declaration (HPD) 1,000 ppm Disclosure NSF 140 Gold
Indoor Air Quality	CRI Green Label Plus (GLP) GLP2271
Climate Impact	
Environmental Product Declaration (EPD)	3rd Party Certified in Accordance with ISO14044, ISO14025 & EN15804
Embodied Carbon (Cradle to Gate)	11.6 (based upon 27.41 oz face weight) kg CO ₂ /m ²
Total Recycled Content	<1% (Pre-Consumer <1% Post-Consumer 0%)
Product Packaging	100% Recyclable
Global Product Assessment	CE Marking (EN 14041) 3rd Party Certified Environmental Guarantee* Re[turn] Reclamation Program* Pickup & Delivery Available Country of Origin** USA

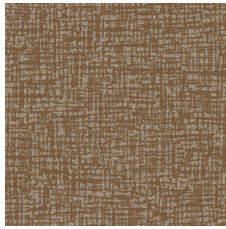
WELL V2 Contribution Credit

X08 Hazardous Material Reduction Part 1: Limit Hazardous Materials Optimization	C2C Silver Level (Version 3.1)
X10 Volatile Compound Reduction Part 1 (A): Manage Volatile Organic Compounds (VOCs) Optimization	C2C Silver Level (Version 3.1)
X11 Long Term Emissions Control Part 2: Flooring Optimization	Green Label Plus Certification GLP2271
X13 Enhanced Material Precaution Part 1: Select Optimized Materials Optimization	C2C Silver Level (Version 3.1)
X14 Material Transparency Part 1: Promote Ingredient Disclosure Optimization	C2C Silver Level (Version 3.1)

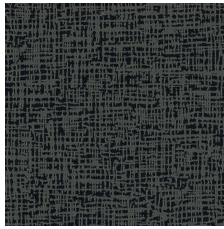
Leed v4 Contribution Credits

MR Credit: Building Product Disclosure and Optimization Environmental Product Declarations - Option 1: Environmental Product Declaration (EPD)	3rd Party Certified in Accordance with ISO14044, ISO14025 & EN15804
MR Credit: Building Product Disclosure and Optimization Material Ingredients - Option 1: Material Ingredient Reporting	C2C Silver Level (Version 3.1)
MR Credit: Building Product Disclosure and Optimization Material Ingredients - Option 2: Material Ingredient Optimization	C2C Silver Level (Version 3.1)
EQ Credit: Low Emitting Materials Option 1: Product Category Calculations	Green Label Plus Certification: GLP2271

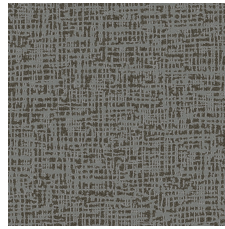
Available Colorways



Camel 00170



Navy 00496



Silver 00530



Slate 00555



Chocolate 00585



Taupe 00760

Additional Information

* To learn more about the recyclability of our products and our Environmental Guarantee, please visit shawcontract.com/sustainability.

**Meets or exceeds all local and national regulations in country of manufacture. (Manufactured in an ISO 9001 & ISO 14001 certified facility or equivalent)

***This carpet is manufactured to be ADA compliant, but to be fully ADA compliant, the end-user must ensure the carpet is adhered to the floor and installed as outlined in the ADA standards.

[Installation Guidelines](#)

[Maintenance Guidelines](#)

Specifications are subject to nominal manufacturing variance. Material supply and/or manufacturing processes may necessitate changes without notice.

This product is an exclusive design and may not be duplicated in any manner. Use of this design in the creation of another product design is also strictly prohibited.

Visit shawcontract.com/testing for more information.



PVC-Free

Corporate Headquarters +1 800 257 7429 | +1 706 532 7984 | Atlanta +1 404 853 7429 | Bengaluru +91 80 6773 0202 | Beijing +86 10 6568 588 | Chicago +1 312 467 1331 | Dubai +971 4 584 6956 | Hong Kong +852 2623 0371 | London +44 207 961 4120 | Los Angeles +1 800 233 1614 | Melbourne +61 3 9939 8543 | Mexico City +55 5010 7600 | Mumbai +91 22 6284 5050 | Nantong +86 400 800 7429 | New York +1 212 953 7429 | Paris +33 (0) 1 81 22 44 39 | San Francisco +1 415 955 1920 | Shanghai +86 21 3338 4000 | Singapore +65 6733 1811 | Sydney +61 800 556 302

© 2025 Shaw Industries Group, Inc., a Berkshire Hathaway Company
August 12, 2025

3 of 3