

# ShawContract®

## Valle Broadloom

Product Type	<b>Broadloom</b>	
Collection	<b>Cultura</b>	
Style Number	<b>5A382</b>	
Construction	<b>Multi-Level Pattern Cut/Loop</b>	
Fiber	<b>Ecosolution Q® Nylon</b>	
Dye Method	<b>100% Solution Dyed</b>	
Primary Backing	<b>Synthetic</b>	
Secondary Backing	<b>Ultraloc®</b>	
Protective Treatments	<b>SSP® Shaw Soil Protection</b>	
Recommended Adhesive	<b>1000 or 3800</b>	
	u.s.	metric
Product Size	<b>12 ft</b>	<b>3.66 m</b>
Gauge	<b>1/10 in</b>	<b>39.4 per 10 cm</b>
Stitches	<b>10.0 per in</b>	<b>39.0 per 10 cm</b>
Finished Pile Thickness	<b>0.185 in</b>	<b>4.7 mm</b>
Average Density	<b>6227 oz/yd<sup>3</sup></b>	<b>0.23 g/cm<sup>3</sup></b>
Total Thickness	<b>0.378 in</b>	<b>9.6 mm</b>
Tufted Weight	<b>32 oz/yd<sup>2</sup></b>	<b>1085 g/m<sup>2</sup></b>
Installation Pattern Repeat	<b>72 in x 108 in</b>	<b>182.9 cm x 274.3 cm</b>



## Recommended Installation Method

Direct Glue, Double Glue, Stretch-In

## Performance + Testing

Radiant Panel	<b>Class I</b>
NBS Smoke	<b>Less Than 450</b>
Electrostatic Propensity	<b>Less Than 3.5 kv</b>
CRI Green Label Plus (GLP)	<b>GLP2271</b>
ADA Compliance	<b>&gt;0.6, meets the recommended static coefficient of friction for ADA walking surfaces and accessible routes***</b>

Test Reports may be included or listed by the manufacturing/inventory style number as opposed to the noted selling style number.

## Warranties

[Lifetime Commercial Limited Warranty](#)

## Diversity & Inclusion

We promote supplier participation that is reflective of Shaw Industries' diverse customer base and local community. We believe having a strong Supplier Diversity Program is strategic for bringing more innovation to our businesses and opening new markets for growth.

## Coordinating Products

LVT: **In Unison 5.0, Crossing Paths 5.0, In Unison 2.5, Crossing Paths 2.5**

Carpet Tile: **Alban Tile, Hand Woven Tile, Local Tile, Sierra Tile, Casa Tile, Cross Weave Tile**

Broadloom: **Braided Broadloom**

## Material Health & Environmental Certifications

### Health & Wellbeing

Material Ingredient Transparency

**Cradle to Cradle Certified® | Silver Level (Version 3.1)**  
**Health Product Declaration (HPD) | 1,000 ppm Disclosure**  
**NSF 140 | Gold**

Indoor Air Quality

**CRI Green Label Plus (GLP) | GLP2271**

### Climate Impact

Environmental Product Declaration (EPD)

**3rd Party Certified in Accordance with ISO 14044, ISO 14025 & EN15804**

Embodied Carbon (Cradle to Gate)

**11.6 (based upon 27.41 oz face weight) kg CO<sub>2</sub>/m<sup>2</sup>**

Total Recycled Content

**<1% (Pre-Consumer <1% | Post-Consumer 0%)**

Product Packaging

**100% Recyclable**

### Global Product Assessment

**CE Marking (EN 14041) | 3rd Party Certified**

**Environmental Guarantee\* | Re[turn] Reclamation Program\* | Pickup & Delivery Available**

**Country of Origin\*\* | USA**

## WELL V2 Contribution Credit

X08 Hazardous Material Reduction

Part 1: Limit Hazardous Materials Optimization

**C2C Silver Level (Version 3.1)**

X10 Volatile Compound Reduction

Part 1 (A): Manage Volatile Organic Compounds (VOCs) Optimization

**C2C Silver Level (Version 3.1)**

X11 Long Term Emissions Control

Part 2: Flooring Optimization

**Green Label Plus Certification GLP2271**

X13 Enhanced Material Precaution

Part 1: Select Optimized Materials Optimization

**C2C Silver Level (Version 3.1)**

X14 Material Transparency

Part 1: Promote Ingredient Disclosure Optimization

**C2C Silver Level (Version 3.1)**

## Leed v4 Contribution Credits

MR Credit: Building Product Disclosure and Optimization

Environmental Product Declarations - Option 1: Environmental Product Declaration (EPD)

**3rd Party Certified in Accordance with ISO 14044, ISO 14025 & EN15804**

MR Credit: Building Product Disclosure and Optimization

Material Ingredients - Option 1: Material Ingredient Reporting

**C2C Silver Level (Version 3.1)**

MR Credit: Building Product Disclosure and Optimization

Material Ingredients - Option 2: Material Ingredient Optimization

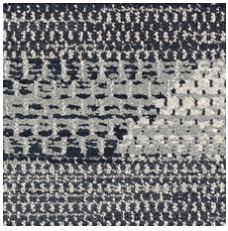
**C2C Silver Level (Version 3.1)**

EQ Credit: Low Emitting Materials

Option 1: Product Category Calculations

**Green Label Plus Certification: GLP2271**

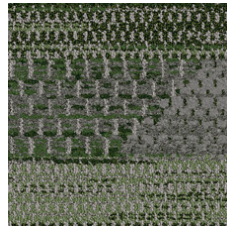
## Available Colorways



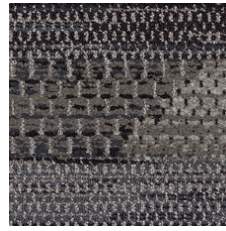
Cobblestone 81100



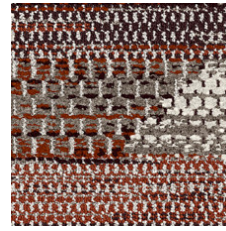
Vibrant Maiz 81210



Vibrant Agave 81375



Tejate 81518



Vibrant Native 81865

## Additional Information

\* To learn more about the recyclability of our products and our Environmental Guarantee, please visit [shawcontract.com/sustainability](http://shawcontract.com/sustainability).

\*\*Meets or exceeds all local and national regulations in country of manufacture. (Manufactured in an ISO 9001 & ISO 14001 certified facility or equivalent)

\*\*\*This carpet is manufactured to be ADA compliant, but to be fully ADA compliant, the end-user must ensure the carpet is adhered to the floor and installed as outlined in the ADA standards.

[Installation Guidelines](#)

[Maintenance Guidelines](#)

Specifications are subject to nominal manufacturing variance. Material supply and/or manufacturing processes may necessitate changes without notice.

This product is an exclusive design and may not be duplicated in any manner. Use of this design in the creation of another product design is also strictly prohibited.

Visit [shawcontract.com/testing](http://shawcontract.com/testing) for more information.



**PVC-Free**