

Vitality Sheet

Collection	Vitality	
Style Number	0873V	
Welding Rod Style Number	353VS	
Construction	Commercial Homogeneous Sheet	
Class / ASTM F1913		
Finish	ExoGuard®	
	U.S.	Metric
Overall Thickness	0.079 in	2 mm
Installation Type	Dry Back	
Recommended Adhesive	S150-95, 4200 1 Gallon, 4200 4 Gallon, 2200 or 4151	

Packaging

Actual Roll Size	6.58 ft w x 65.94 ft l	2.01 m w x 20.10 m l
Area per Roll	47.84 sy/roll	40 sq m/roll
Weight per Roll	284 lbs	128.82 kg



Recommended Installation Method



Reverse

Coordinating Products

Sheet: Vitality Tones, Vitality Hues

Performance + Testing

Static Load (ASTM F970)	Passes (Modified), *2000 lbs	*This test is intended to compare relative properties of different styles and constructions. Results are based on a laboratory test and used for comparative purposes - real life load limit may vary.
Residual Indentation (ASTM F1914)	Passes	
Flexibility (ASTM F137)	Passes	
Resistance to Heat (ASTM F1514)	Passes	
Resistance to Light (ASTM F1515)	Passes	
Resistance to Chemicals (ASTM F925)	Passes	
Radiant Panel (ASTM E648)	Passes, Class I	
Coefficient of Friction (ASTM D2047, Slip Resistance)	>0.6, meets the recommended static coefficient of friction for ADA walking surfaces and accessible routes	

Test Reports may be included or listed by the manufacturing/inventory style number as opposed to the noted selling style number.

Warranties

[Commercial 15 Year Underbed Bond Warranty](#)

[15 Year Commercial Limited Warranty](#)

Diversity & Inclusion

We promote supplier participation that is reflective of Shaw Industries' diverse customer base and local community. We believe having a strong Supplier Diversity Program is strategic for bringing more innovation to our businesses and opening new markets for growth.

Material Health & Environmental Certifications

Health & Wellbeing

Material Ingredient Transparency
Indoor Air Quality

Health Product Declaration (HPD) | 1000 ppm Disclosure
FloorScore® | Certified

Climate Impact

Environmental Product Declaration (EPD)

Embodied Carbon (Cradle to Gate)
Life-Cycle Carbon Emissions
Total Recycled Content

3rd Party Certified in Accordance with ISO 14025, EN 15804, & ISO 21930:2017
6.91 Kg CO₂/M²
Low Embodied Carbon
0% (Pre-Consumer 0% | Post-Consumer 0%)

Global Product Assessment

CE Marking (EN 14041) | 3rd Party Certified
Country of Origin | Imported

WELL V2 Contribution Credit

X01 Fundamental Material Precautions
Part 1: (C): Restrict Asbestos Precondition

X08 Hazardous Material Reduction
Part 1: Limit Hazardous Materials Optimization

X10 Volatile Compound Reduction
Part 1 (A): Manage Volatile Organic Compounds (VOCs) Optimization

X10 Volatile Compound Reduction
Part 2: Manage Semi-Volatile Organic Compounds (SVOCs) Optimization

X11 Long Term Emissions Control
Part 2: Flooring Optimization

X14 Material Transparency
Part 1: Promote Ingredient Disclosure Optimization

Absence of Asbestos

Absence of Heavy Metals

Absence of Halogenated Flame Retardants

Ortho-Phthalates

FloorScore Certified

Health Product Declaration (HPD) | 1000 Ppm Disclosure

Leed v4 Contribution Credits

MR Credit: Building Product Disclosure and Optimization
Material Ingredients - Option 1: Material Ingredient Reporting

MR Credit: Building Product Disclosure and Optimization
Environmental Product Declarations - Option 1: Environmental Product Declaration (EPD)

EQ Credit: Low Emitting Materials
Option 1: Product Category Calculations

[Installation Guidelines](#)

[Maintenance Guidelines](#)

Health Product Declaration (HPD) | 1000 Ppm Disclosure

3rd Party Certified in Accordance with ISO 14025, EN 15804, & ISO 21930:2017

FloorScore Certified

Please visit www.shawcontract.com for the most current warranty information. Specifications are subject to nominal manufacturing variance. Material supply and/or manufacturing processes may necessitate changes without notice.

This product is an exclusive design and may not be duplicated in any manner. Use of this design in the creation of another product design is also strictly prohibited.

Visit shawcontract.com/testing for more information.

Available Colorways

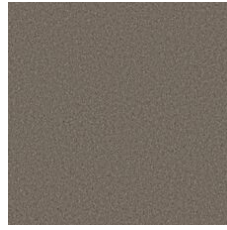




Energy 73675
Weldrod 05219



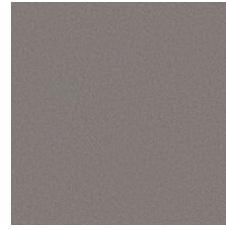
Thrive 73700
Weldrod 05243



Abundance 73740
Weldrod 05230



Comfort 73755
Weldrod 05228



Balance 73761
Weldrod 05244



Robust 73855
Weldrod 05220

