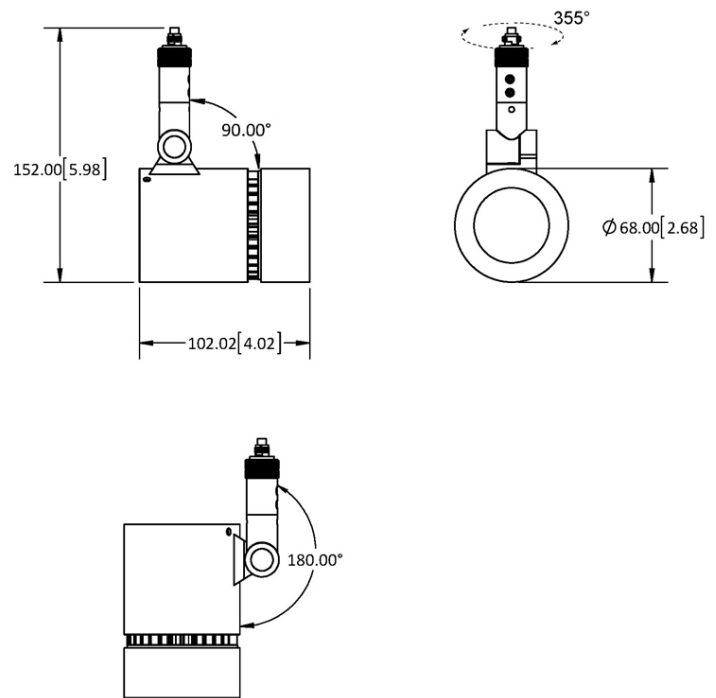


DEL (\$*)

- Adjustable 355 degree swivel and 90-180 degree pivot
- Comes standard with solite lens
- Each track head delivers up to 660 lumens depending on color temperature
- Low voltage total power consumption for DEL 406 is 14.7W
- 29 (P-Track) includes dimmable constant current driver, ELV dimming only
- E6 (Canopy) includes dimmable constant current driver, ELV, TRIAC, or 0-10V dimming available
- Photo shown is 1406-SV with FIT adapter
- When choosing monopoint Monorail, Cable system, you must order proper drivers (P/N: [39-CV60DVT-24](#) or [39-CV100DVT-24](#)) (120~277V input, 24Vdc output, 0-10V dimming) separately
- This fixture can be mounted on any Prima Lighting System and ceiling canopy through use of an appropriate adapter, see website for available system codes and specialized spec sheets.
- Consult factory for pricing on fixtures connect to multipoint ([M1~ M7 canopy](#))



**DIMENSIONS ARE IN MILLIMETERS [INCHES]
(NOT TO SCALE)**

Variable Specs

Note: Variable spec listed below are dependant on system code selection. [Click here to see specific variations.](#)

- | | | |
|---|--|--------------------------------|
| <input checked="" type="checkbox"/> Black | <input checked="" type="checkbox"/> Polished Chrome | <input type="checkbox"/> White |
| <input checked="" type="checkbox"/> Bronze | <input checked="" type="checkbox"/> Silver or Aluminum | |
| <input checked="" type="checkbox"/> Champagne (Matted Gold) | | |

Suspension Code:

- (ST) Standard
- (6) 6" Stem
- (12) 12" Stem
- (18) 18" Stem
- (24) 24" Stem
- (30) 30" Stem
- (36) 36" Stem

LED Optic Angle:

- (S) Spot 15°
- (N) Narrow 28°
- (F) Flood 40°

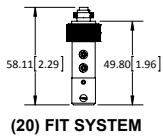
Lamp Type (LD) Dimmable:

- (278) 2700K - 82 CRI
- (308) 3000K - 82 CRI
- (309) 3000K - 90 CRI
- (358) 3500K - 80 CRI
- (408) 4000K - 80 CRI

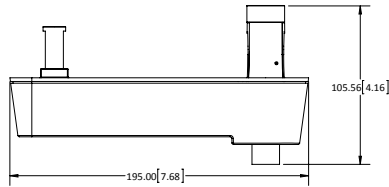
Special Note: *All fixtures and lighting systems must be used with dedicated circuit and a Prima transformer, driver, and/or ballast to comply with cUL/cETL listing; or all warranties are void.

SYSTEM CODE:	LUMEN STYLES:	FINISH COLORS:
(10) 120V ADAPTER FOR P-TRACK FIXTURE	Not Available	Not Available
(20) FIT SYSTEM	LD / L0	BK/SV
(25) 120V RETRO-FIT ADAPTER FOR H-TRACK FIXTURE	Not Available	Not Available
(26) 120V RETRO-FIT ADAPTER FOR J-TRACK FIXTURE	Not Available	Not Available
(27) H-TRACK RETRO FIT ADAPTER	Not Available	Not Available
(28) J-TRACK RETRO FIT ADAPTER	Not Available	Not Available
(29) HOUSING ADAPTER FOR P-TRACK	LD	BK/SV/WH
(40) LOW VOLTAGE MONORAIL SYSTEM	LD / L0	BK/SV/BZ/CP/PC
(42) CABLE SYSTEM – 6" WIDTH	LD / L0	BK/SV/PC
(43) CABLE SYSTEM – 2.75" WIDTH	LD / L0	BK/SV/PC
(E1) MONOPOINT 5" CANOPY W/ 120V TO 12V TRANSFORMER	Not Available	Not Available
(E2) MONOPOINT 5" CANOPY W/ 277V TO 12V TRANSFORMER	Not Available	Not Available
(E3) MONOPOINT 5" CANOPY W/ 120V BALLAST OR LED 120V/12V TRANSFORMER	Not Available	Not Available
(E4) MONOPOINT 5" CANOPY W/ 277V BALLAST OR LED 277V/12V TRANSFORMER	Not Available	Not Available
(E5) MONOPOINT 5.5" CANOPY W/ DIMMABLE 120V~277V BALLAST	Not Available	Not Available
(E6) MONOPOINT 5.5" CANOPY W/ CONSTANT CURRENT DRIVER	LD	BK/SV/BZ/CP/WH
(M1-M7) MULTIPOINT	(CONSULT FACTORY)	(CONSULT FACTORY)
(P1) MONOPOINT DIA. 0.7" W/ THREADED NIPPLE MOUNTING	LD / L0	BK/SV/BZ/PC/CP/WH
(P2) MONOPOINT DIA. 1.6" W/ THREADED NIPPLE MOUNTING	LD / L0	BK/SV/BZ/PC/CP/WH
(P3) MONOPOINT DIA. 1.6" W/ SCREW/ANCHOR MOUNTING	LD / L0	BK/SV/BZ/PC/CP/WH
(P4) MONOPOINT 5" DIRECT MOUNT SQUARE COVER PLATE	LD / L0	BK/SV/BZ/PC/CP/WH
(P5) MONOPOINT 5" JBOX PLATE	LD / L0	BK/SV/BZ/PC/CP/WH

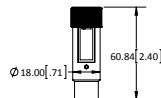
NOTE: DIMENSIONS ARE IN MILLIMETERS [INCHES]



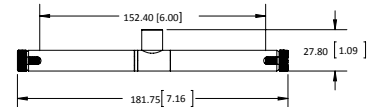
(20) FIT SYSTEM



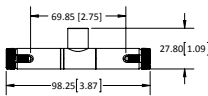
(29) HOUSING ADAPTER FOR P-TRACK



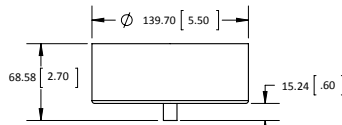
(40) LOW VOLTAGE MONORAIL SYSTEM



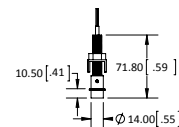
(42) CABLE SYSTEM - 6.00" WIDTH



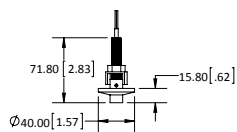
(43) CABLE SYSTEM - 2.75" WIDTH



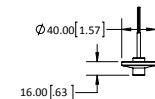
(E6) MONOPOINT 5.5" CANOPY W/ CONSTANT CURRENT DRIVER



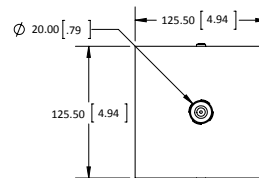
(P1) MONOPOINT DIA. 0.7" W/ THREADED NIPPLE MOUNTING



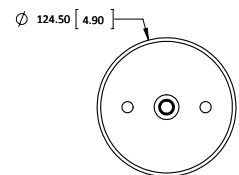
(P2) MONOPOINT DIA. 1.6" W/ THREADED NIPPLE MOUNTING



(P3) MONOPOINT DIA. 1.6" W/ SCREW/ANCHOR MOUNTING



(P4) 5" DIRECT MOUNT SQUARE COVER PLATE



(P5) MONOPOINT 5" JBOX PLATE

Special Note: *All fixtures and lighting systems must be used with dedicated circuit and a Prima transformer, driver, and/or ballast to comply with cUL/cETL listing; or all warranties are void.