

IMPORTANT SAFETY INSTRUCTIONS
For use with UPSIDE Electric Height Adjustable Tables, 2 Leg
For Commercial or Household Use Only
This product conforms to UL962 and is certified to CAN/CSA C22.2 No. 68.

When using an electrical furnishing, basic precautions should always be followed, including the following:
Read all instructions before using this table.

DANGER - To reduce the risk of electric shock:

1. Always unplug this furnishing from the electrical outlet before cleaning or servicing.

WARNING: TO REDUCE THE RISK OF BURNS, FIRE, ELECTRIC SHOCK, OR INJURY TO PERSONS:

1. Unplug from outlet before putting on or taking off parts.
2. Close supervision is necessary when this furnishing is used by, or near children, invalids, or disabled persons.
3. Use this furnishing only for its intended use as described in these instructions. Do not use attachments not recommended by the manufacturer.
4. Never operate this furnishing if it has a damaged cord or plug, if it is not working properly, if it has been dropped or damaged, or dropped into water. Return the furnishing to a service center for examination and repair.
5. Keep the cord away from heated surfaces.
6. Do not use outdoors.
7. Do not operate where aerosol (spray) products are being used or where oxygen is being administered.
8. To disconnect, turn all controls to the off position, then remove plug from outlet.

9. **WARNING: RISK OF ELECTRIC SHOCK - CONNECT THIS FURNISHING TO A PROPERLY GROUNDED OUTLET ONLY. SEE GROUNDING INSTRUCTIONS.**

10. **WARNING: RISK OF ELECTRIC SHOCK, FIRE, AND INJURY. REVIEW THE ASSEMBLY INSTRUCTIONS TO CONFIRM THAT THE APPROPRIATE CRITICAL COMPONENTS AND ACCESSORIES ARE BEING USED WITH THE FURNISHING.**

SAVE THESE INSTRUCTIONS

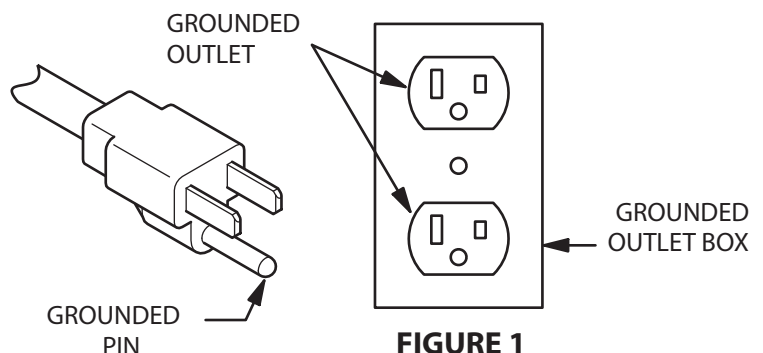
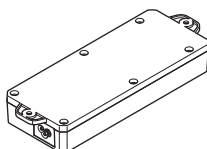
This product must be grounded. If it should malfunction or breakdown, grounding provides a path of least resistance for electric current to reduce the risk of electric shock. This product is equipped with a cord having an equipment-grounding conductor and a grounding plug. The plug must be plugged into an appropriate outlet that is properly installed and grounded in accordance with all local codes and ordinances.

DANGER - Improper connection of the equipment-grounding conductor can result in a risk of electric shock. Check with a qualified electrician or serviceman if you are in doubt as to whether the product is properly grounded. Do not modify the plug provided with the product - if it will not fit the outlet, have a proper outlet installed by a qualified electrician.

This product is for use on a nominal 120-volt circuit and has a grounding plug that looks like the plug illustrated in sketch A (see Figure 1). Make sure that the product is connected to an outlet having the same configuration as the plug. No adapter should be used with this product.

Maximum Load rating including surface: 250 lbs

Electrical Rating:
120V, 60Hz, 6.25A for Upside+ 2 leg tables
120V, 60Hz, 6A for Upside 2 leg tables



CUSTOMER SERVICE PHONE: 1-800-426-8562

HAWORTH

E.C.O. No: 245-789

Page: 1 of 30

Part No: 6100-0110

Rev: 5

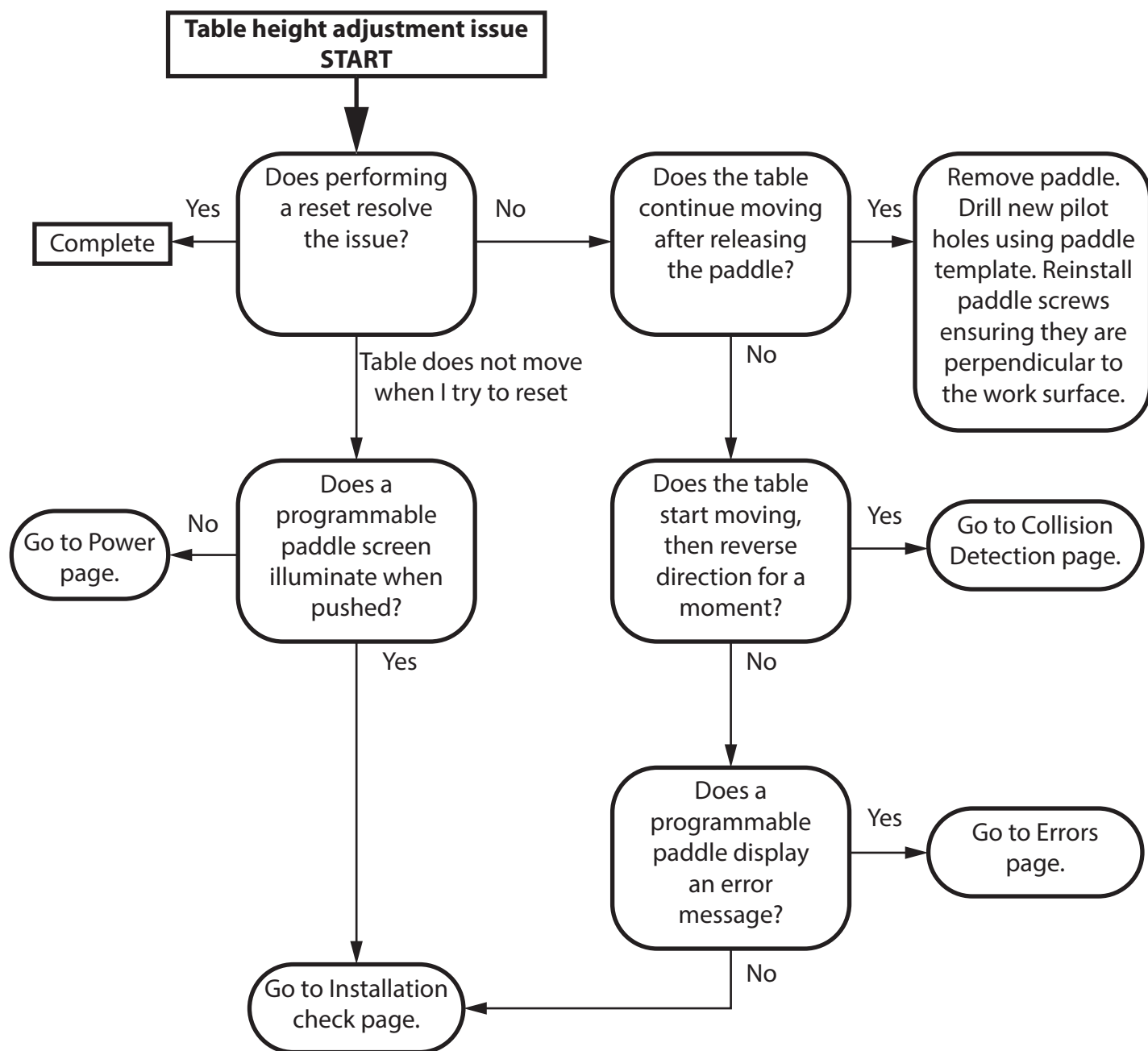
STATE: PRODUCTION ECO/ECN: 245-789A EFF DATE: 01/16/2023

HAWORTH

Upside Table

Troubleshooting Guide

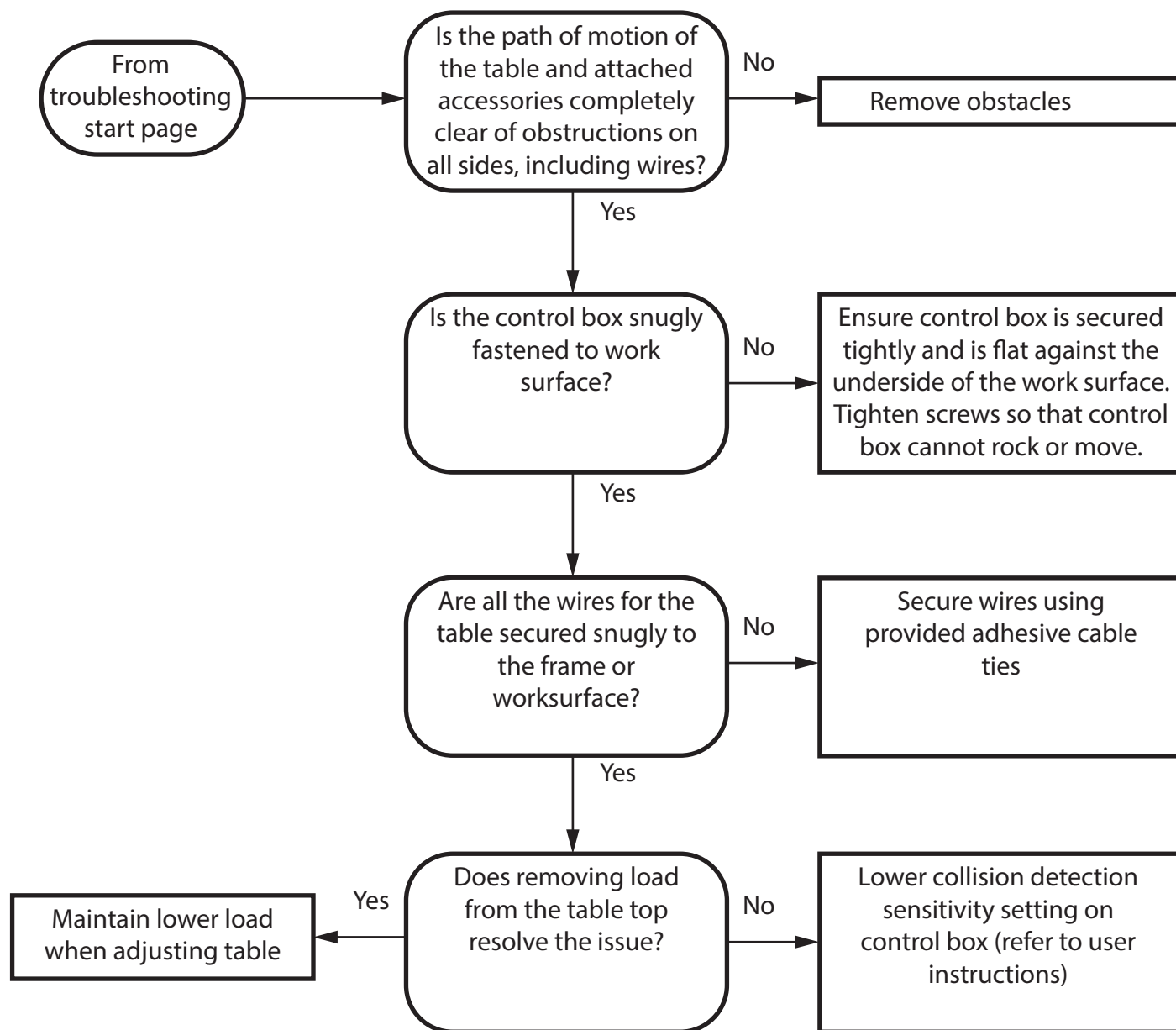
Note: Parts of this guide require a programmable paddle handset, service part # 8754-8401.



HAWORTH

Upside Table

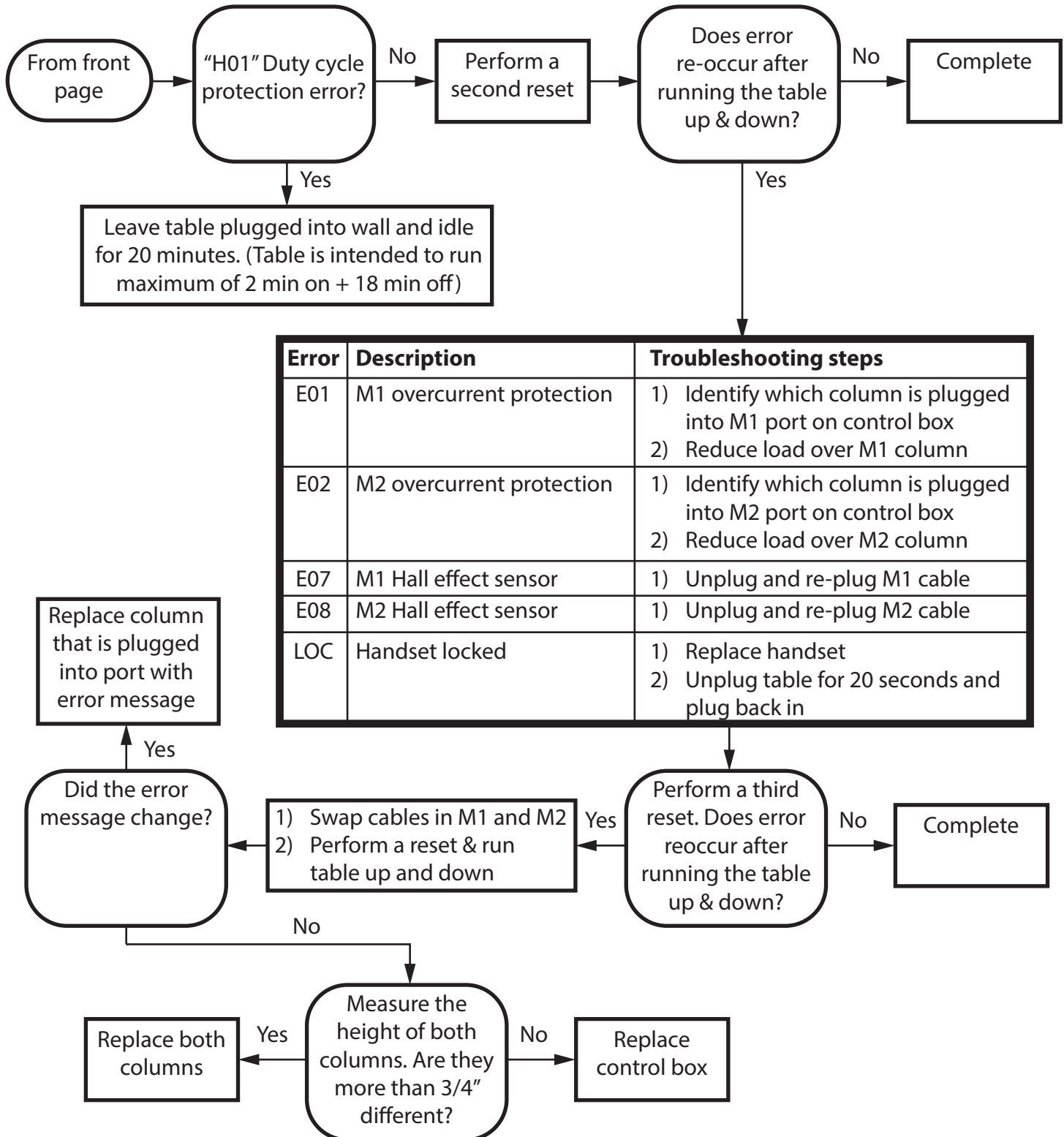
Collision Detection



HAWORTH

Upside Table

Errors



CUSTOMER SERVICE PHONE: 1-800-426-8562

HAWORTH

E.C.O. No: 245-789

Page: 28 of 30

Part No: 6100-0110

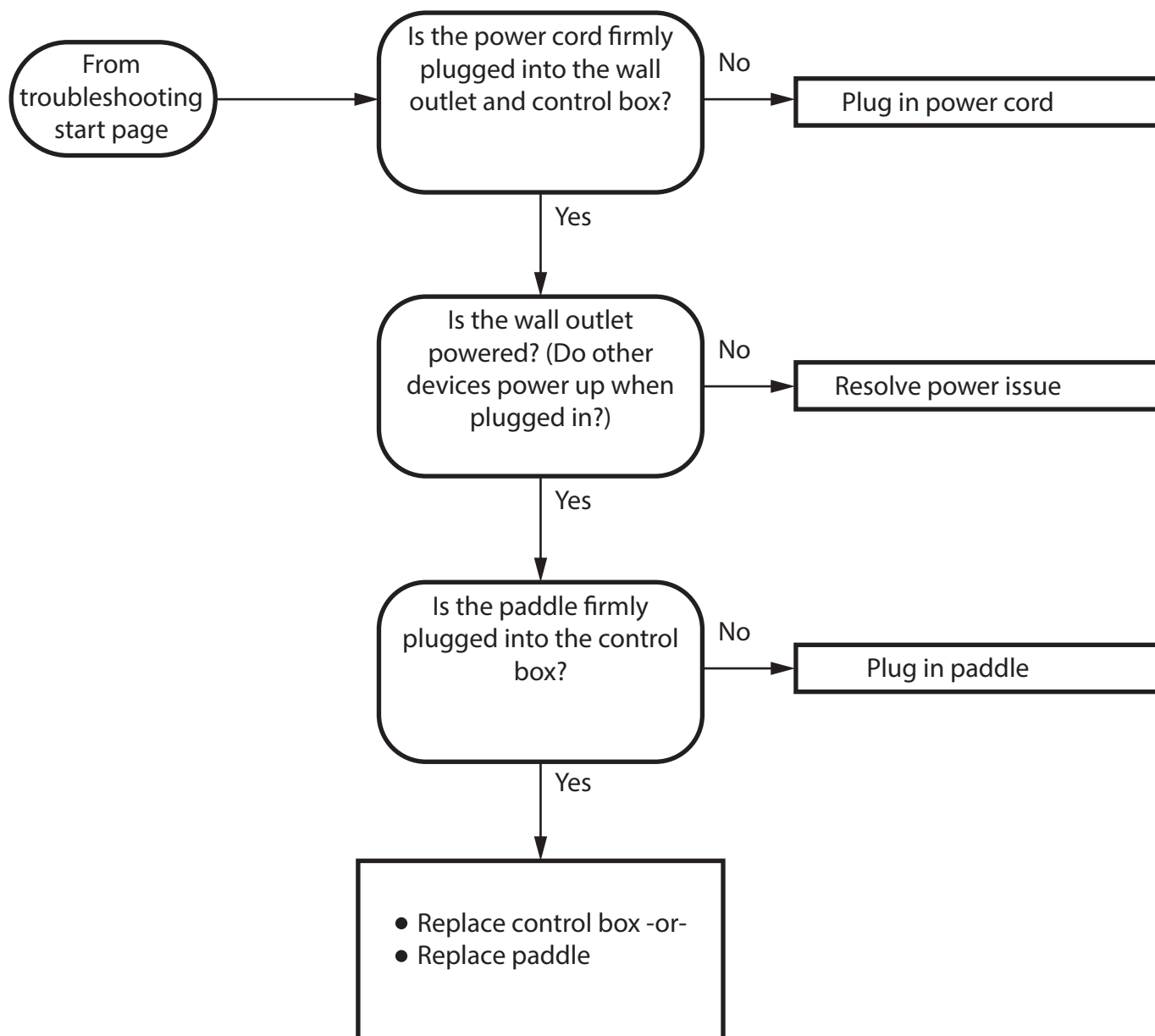
Rev: 5

STATE: PRODUCTION ECO/ECN: 245-789A EFF DATE: 01/16/2023

HAWORTH

Upside Table

Power



HAWORTH

Upside Table

Installation Check

