


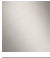




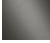
IMO Wall valve anti-clockwise closing 3/4" - Chrome

IMO

36 608 980 Product version from 6/1/2024



- rosette 60 x 60 mm
- head part with cut-to-length spindle and sleeve
- WRAS

| | | |
|---|-----------------------|---------------|
|  | Chrome | 36 608 980-00 |
|  | Brushed Platinum | 36 608 980-06 |
|  | Dark Chrome | 36 608 980-19 |
|  | Brushed Light Gold | 36 608 980-27 |
|  | Matte Black | 36 608 980-33 |
|  | Brushed Chrome | 36 608 980-93 |
|  | Brushed Dark Platinum | 36 608 980-99 |

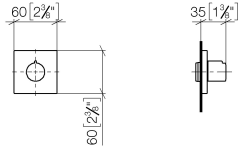
Required miscellaneous



- Wall valve 3/4" -** 35 608 970 90
- max. recess depth 145 mm
 - min. recess depth 75 mm

36 608 980 Product version from 6/1/2024

mm [inches]

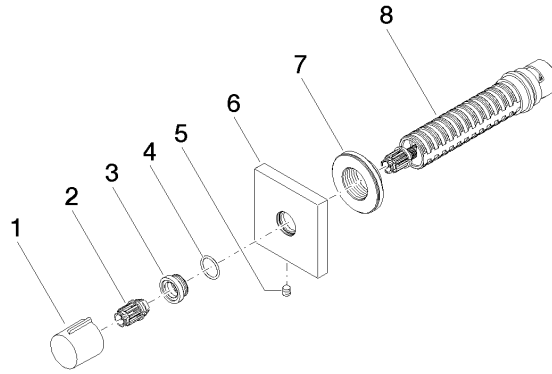


Codes & Standards

| | | | |
|----------------|------|---------------------------|--------------------------------|
| ASME A112.18.1 | cUPC | Scottish Water Byelaws | UK Water Supply Regulations |
|----------------|------|---------------------------|--------------------------------|

Certificates and sustainability

| | |
|-----------|--------------|
| WRAS_2010 | IAPMO_4976 (|
|-----------|--------------|



Spare parts list

| No. | Item Number | Name | Quantity used | Delivery time |
|-----|--------------------|------------|---------------|---------------|
| 1 | 09 20 98 001-00 | handle | 1.00 | 10 |
| 4 | 09 14 10 017 90 | seal | 1.00 | 2 |
| 3 | 09 12 12 043-00 | base | 1.00 | 10 |
| 2 | 09 12 12 005 90 | fixing cap | 1.00 | 2 |
| 7 | 09 21 02 151 90 | sleeve | 1.00 | 2 |
| 6 | 09 27 98 014-00 | rosette | 1.00 | 10 |
| 8 | 90 90 03 128 00 90 | top | 1.00 | 2 |
| 5 | 90 31 11 004 00 90 | pin | 1.00 | 2 |