

Enhance™ Collection

Prismara™ is where playfulness meets sophistication. This vibrant series brings spaces to life with its dynamic 3D textures and grooves, offering a tactile experience that's as engaging as it is visually striking. Available in 6 lively colors, Prismara invites creativity and bold design statements, perfect for those who want to infuse energy and personality into their projects.

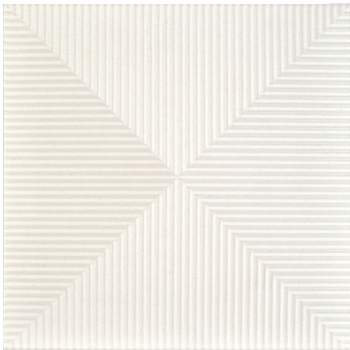
PRISMARA™

Glazed Ceramic

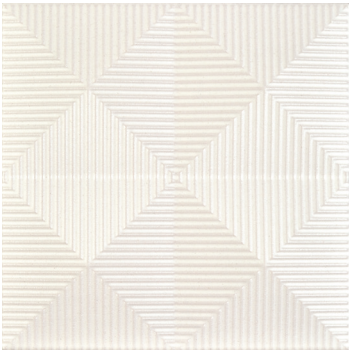




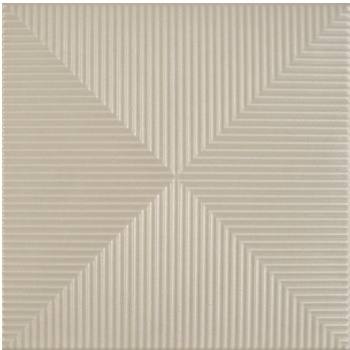
WALL RESIDENTIAL COMMERCIAL INDOOR



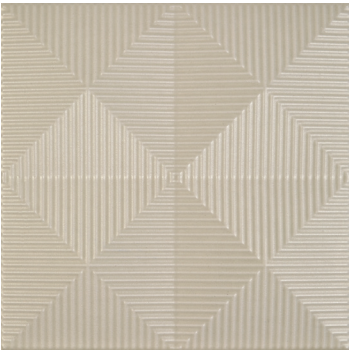
Snow



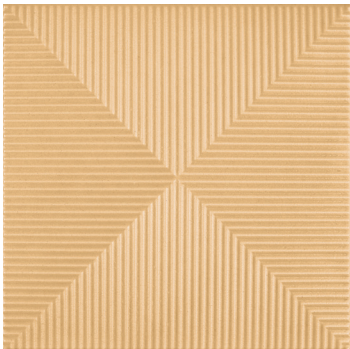
Mini Snow



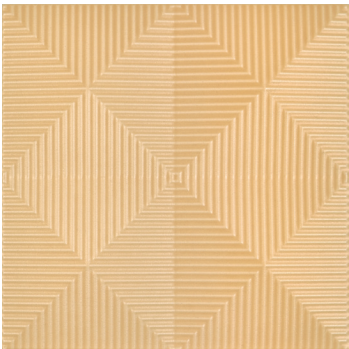
Fog



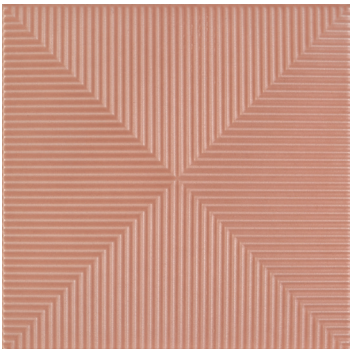
Mini Fog



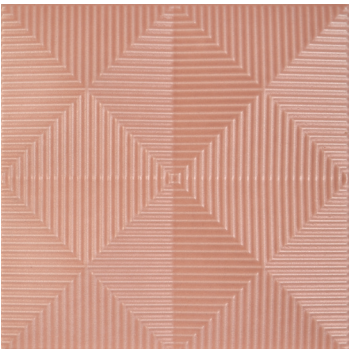
Sun



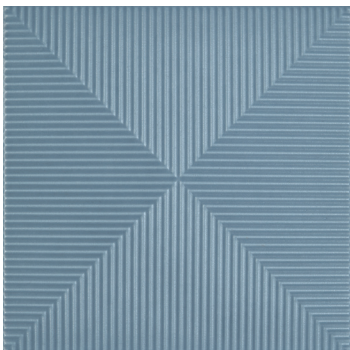
Mini Sun



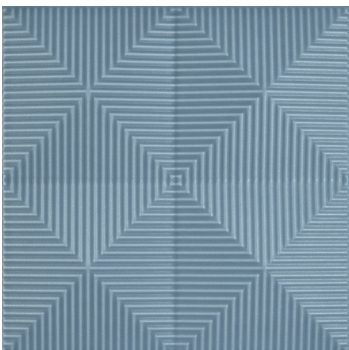
Rose



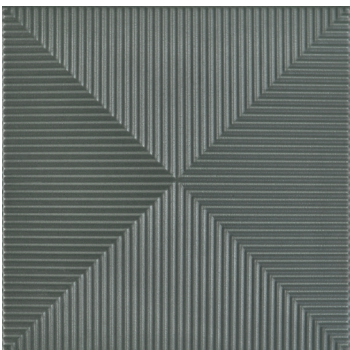
Mini Rose



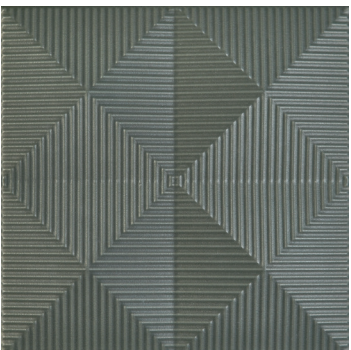
Aqua




Mini Aqua



Eco



Mini Eco

Sizes					
	6" x 6" 6.10" x 6.10"				
	7.4mm				
Thickness	7.4mm				
Grout Joint Recommendation	Check Website				
Testing	Breaking Strength C648	Chemical Resistance C650	Water Absorption C373	Scratch Hardness MOHS	Shade Variation Rating
Results*	Check Website	Check Website	Check Website	Check Website	V1

-  Sustainability Attributes
- Health Product Declaration (HPD) provided upon request
 - Product Packaging is 100% recyclable
 - VOC Free

*For more information visit www.emser.com. Always consult a professional for proper usage and installation.

