

# HON<sup>®</sup>

**Make your space work<sup>®</sup>**

---



**Arrange<sup>®</sup>**  
Tables



# Tables for Today's Active Spaces

## Arrange with Confidence

Work—whether it's heads-down focus or a group effort—doesn't just happen at a desk. Today's healthy workplaces offer employees a variety of ways to stay productive and connected, and Arrange tables are the ideal solution to help bridge the gap. Arrange offers any environment—from bustling cafés to quiet corner nooks—easy mobility, dynamic performance, and clean, contemporary aesthetics designed to make any space smarter and more streamlined. So go ahead—take notes, share coffee, power up your laptop (or all three!). Arrange makes it easy.



SCAN TO  
CHECK OUT  
ARRANGE ON  
HON.COM



Shown with Accommodate® seating.





Shown with Confer™ seating.

## Fits All Spaces



## Relax, Refuel, Refocus

Arrange tables are available in three heights and a variety of worksurface shapes and sizes to support private offices, common areas, and collaborative settings. Find a quiet spot to brainstorm in a small group. Grab a beverage away from the desk. Arrange tables provide the perfect change of scenery.







Shown with Motivate® seating.




## Arrange with Style

From seated-height to café- or counter-height, Arrange takes style and selection to a higher level. This versatile collection of tables can be specified to achieve any desired aesthetic and support any activity. The adaptability is rivaled only by the quality and durability, which are guaranteed by the strongest warranty in the industry—the HON Full Lifetime Warranty.

## Options & Accessories

### Tops

Arrange is available in four different worksurface shapes and sizes, as shown below.

			
<b>ROUND TOP</b> Available in 24", 30", 36", and 42"	<b>SQUARE TOP</b> Available in 24", 30", 36", and 42"	<b>SOFT SQUARE TOP</b> Available in 24", 30", 36", and 42"	<b>RECTANGLE TOP</b> Available in 24" and 30" widths and 48", 60", and 72" lengths

### Bases

Choose seated-, counter-, or café-height aluminum X-bases or T-leg bases, or add an optional disc shroud.

		
<b>X-BASE</b>	<b>T-BASE</b>	<b>DISC SHROUD BASE</b>

### Base Heights

Arrange tables are available in three different heights to support chairs and two sizes of stools.

		
<b>30"H</b>	<b>36"H</b>	<b>42"H</b>
<b>SEATED</b>	<b>COUNTER</b>	<b>CAFÉ</b>

### Optional Grommets

Route technology through the base directly to the tabletop with optional power grommets.



Standard 3" round power grommet

### Disc Shroud Base

Add the disc shroud to any Arrange X-base to create a clean, contemporary aesthetic.





Make your space work®

The HON Company  
Muscatine, IA 52761  
800.833.3964 | Check out [hon.com](https://hon.com)

©2025 The HON Company. Form No. H4903 (1/25)  
To view the registered and unregistered trademarks  
owned and used by The HON Company, visit  
[hon.com/protected-marks](https://hon.com/protected-marks). Models, upholstery  
and finishes are subject to change without notice.



## Finishes

### Laminates



Field Elm



Phantom  
Ecru



Kingswood  
Walnut



Beigewood



Fawn  
Cypress



Natural  
Recon



Natural  
Maple



Harvest



Bourbon  
Cherry



Cognac



Shaker  
Cherry



Lowell Ash



Pinnacle



Florence  
Walnut



Mocha



Mahogany



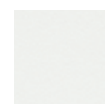
Portico  
Teak



Skyline  
Walnut



Sterling  
Ash



Designer  
White



Loft



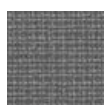
Charcoal



Black



Silver  
Mesh



Steel  
Mesh



Handspun  
Pearl



Handspun  
Dove



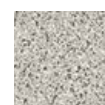
Handspun  
Slate



Handspun  
Chestnut



White



Gray

### Paints



Textured  
Designer  
White



Textured  
Loft



Textured  
Muslin



Textured  
Silver



Textured  
Platinum  
Metallic



Textured  
Titanium



Textured  
Charcoal



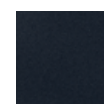
Textured  
Brownstone



Textured  
Black



Solar Black



Charblack

See HON Pricer for complete product information.

For more information, visit [hon.com/arrange](https://hon.com/arrange)