

Design & Specifications

Use of the Product

Gyptone BIG is a large-format, perforated gypsum acoustical panel that allows the creation of wall and ceiling surfaces without visible joints or breaks.

Overall Depth of System

Minimum plenum depth with Gyptone® Z-channel and C-channel is approximately 2".

Surfaces

The gypsum surface is intended to be painted after installation. Paint application must be made with a short nap roller (1/4" recommended). **DO NOT SPRAY PAINT PANELS AS IT WILL SUBSTANTIALLY IMPAIR THE ACOUSTIC PERFORMANCE.** Joints should be taped, finished, and sanded. See page 3 for additional information.

Suspension System

Gyptone BIG can be installed on CertainTeed Z-Channel and C-Channel, furred out from an existing structure. In addition, other Z- and C-channels can be used, provided they provide a minimum surface dimension of 1.5 inches.

Stability

Gyptone BIG is to be installed and used in rooms with relative humidity not exceeding 70% or temperatures exceeding 104 degrees F. Gyptone BIG can be curved (dry) to a maximum 20-foot radius if installed on pre-shaped framing.

Weight

Gyptone BIG products ≈ 1.6 lbs./SF

Cleaning

Can be cleaned with a damp cloth, depending on the final surface treatment. Do not use detergents.

Maintenance

Damages on edges or surfaces can be repaired by filling with joint compound and painting.

Read the entire manual before installing.

Acoustic Walls, New Partitions

- 1 Ceiling structure/ floor structure
- 2 Wall structure
- 3 GK C-Channel profile
- 4 GK Z-Channel profile
- 5 2.5" CertainTeed Insulation (unfaced)
- 6 CertainTeed Gypsum Board
- 7 Gyptone BIG Board

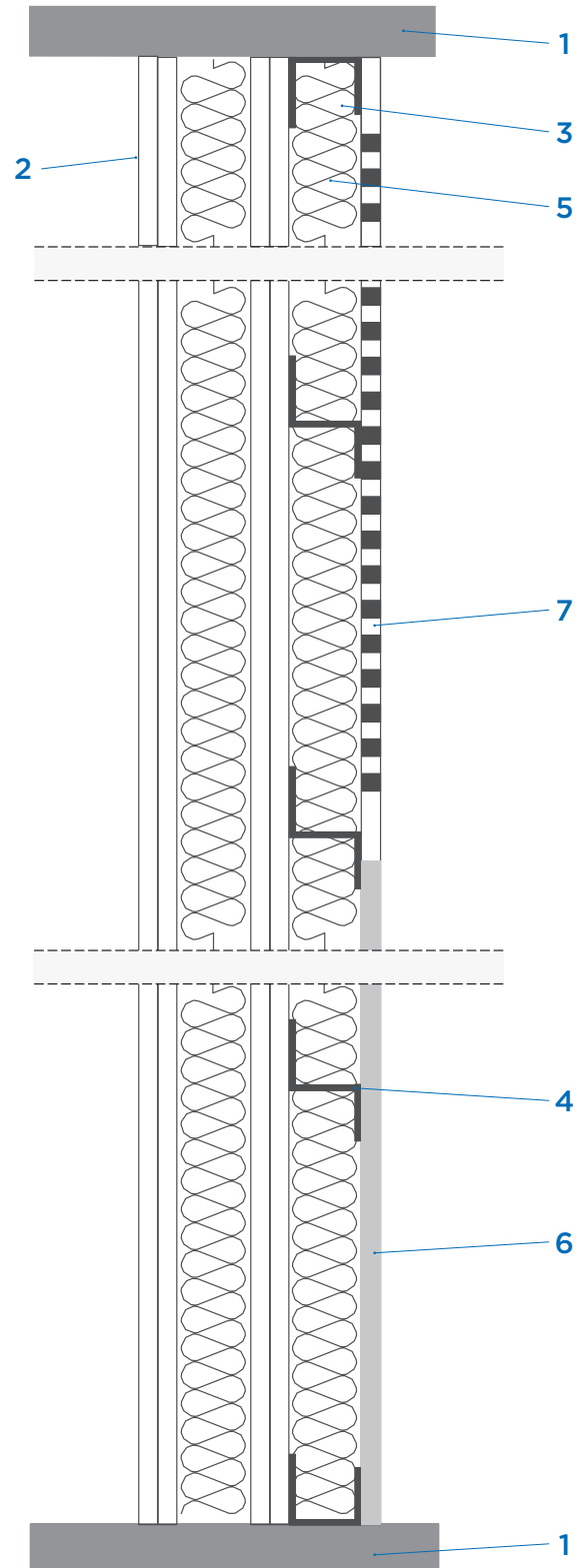
Installation

- Choose a suitable wall structure based on meeting the necessary requirements for fire, light, sound insulation and wall height. The chosen wall is built and used as a base for the Gyptone acoustic wall.
- Frame the wall structure with **GK-Channel** with distance between screws not exceeding 12 inches.
- Attach the **GK Z-Channel** horizontally across the wall structure with the distance between the screws not exceeding 12 inches.
- The distance between the horizontal **GK Z-Channel** sections is 300 mm ($\approx 11\text{-}13/16''$).
- Fit 2.5 inches of **CertainTeed Insulation (unfaced)** between the Z-Channel sections.
- Attach **Gyptone BIG** standing vertically. Locate the boards so that short board edges are directly over the mid-point of the Z-Channel (screw surface).
- Consider attachment of **CertainTeed Gypsum Board** to lower part of the wall where incidental impact may occur.
- Screw distance is a maximum of 8 inches (where possible) on board edges.
- Screw distance is a maximum of 12 inches in the body of the board.
- Screws for attachment in the perforated area of Gyptone BIG and should be **QSTR 25**.

Finishing

- Use **CertainTeed All-Purpose Joint Compound** (or equivalent) and **Marco Spark-Perf Paper Tape** (or equivalent) for all joints.
- All joints, screw holes and edges should be finished until a smooth, even surface is achieved.
- Paint application is one prime coat plus two finish coats applied with a 1/4" nap roller.

NOTE: Perforated Gyptone products must not be spray-painted. Taping/finishing must be done by hand (not with a taping gun)



Acoustic Walls, Existing Structures

- 1 Wall structure
- 2 GK C-Channel profile
- 3 GK Z-Channel profile
- 4 2.5" CertainTeed Insulation (unfaced)
- 5 CertainTeed Gypsum Board
- 6 Gyptone BIG Board

Installation

- Frame the wall structure with **GK C-Channel** with distance between screws not exceeding 12 inches.
- Attach the **GK Z-Channel** horizontally across the wall structure with the distance between the screws not exceeding 12 inches.
- The distance between the horizontal **GK Z-Channel** sections is 300 mm (≈11-13/16").
- Fit 2.5 inches of **CertainTeed Insulation (unfaced)** between the Z-Channel sections.
- Attach **Gyptone BIG** standing vertically. Locate the boards so that short board edges are directly over the mid-point of the Z-Channel (screw surface).
- Consider attachment of **CertainTeed Gypsum Board** to lower part of the wall where incidental impact may occur.
- Screw distance is a maximum of 8 inches (where possible) on board edges.
- Screw distance is a maximum of 12 inches in the body of the board.
- Screws for attachment in the perforated area of Gyptone BIG and should be **QSTR 25**.

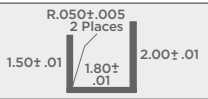
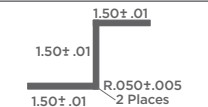
Finishing

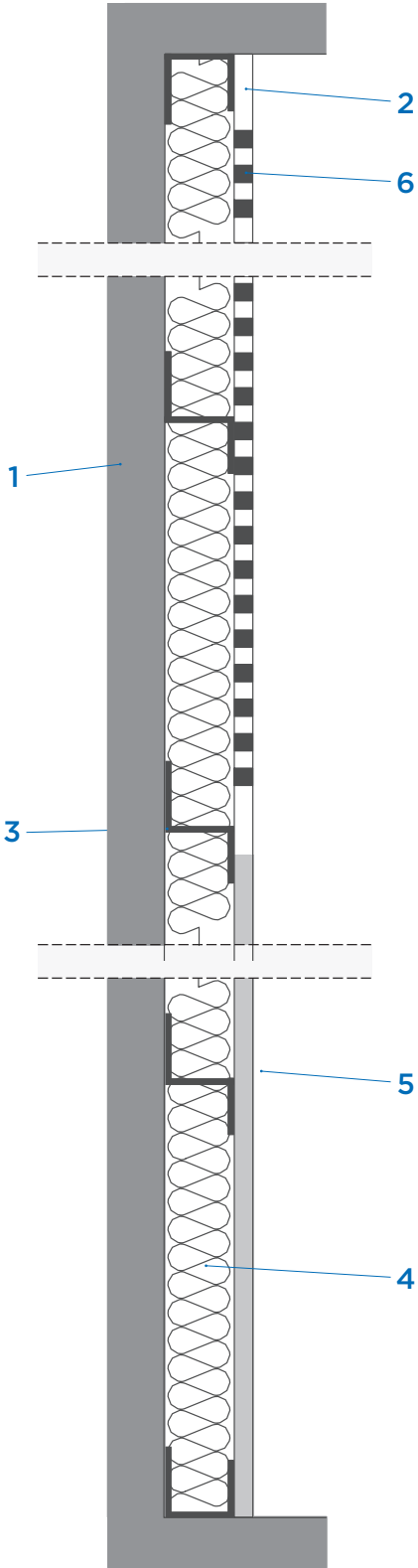
- Use **CertainTeed All-Purpose Joint Compound** (or equivalent) and **Marco Spark-Perf Paper Tape** (or equivalent) for all joints.
- All joints, screw holes and edges should be finished until a smooth, even surface is achieved.
- Paint application is one prime coat plus two finish coats applied with a 1/4" nap roller.

NOTE: Perforated Gyptone products must not be spray-painted. Taping/finishing must be done by hand (not with a taping gun)

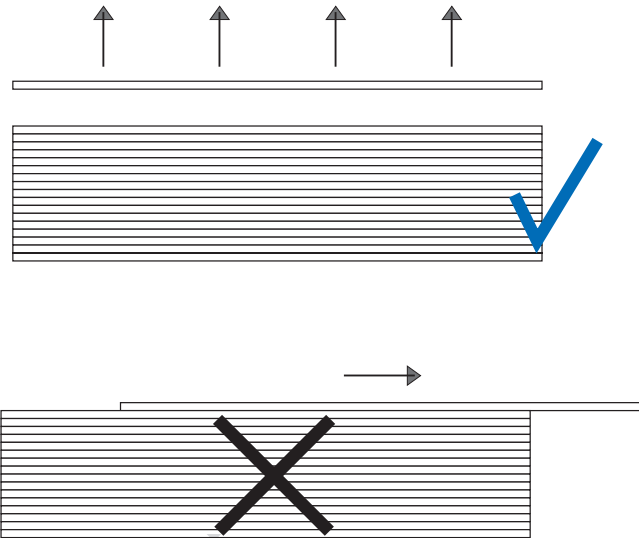
Accessory Consumption Table for Walls

(new / existing)

C-Channel		118 L.F./bundle	As required to frame perimeter of wall on all edges
Z-Channel		98 L.F./bundle	Subtract the length of wall from total square footage of wall. The result is the approximate total Z-Channel required in L.F.



Gyptone® BIG™ Boards are to be lifted vertically off the stack



NOTE: Do not slide panels as damage to acoustic tissue will likely result.