

Specifications

Knoll Velvet, 1970

466780

Application

Seating

Windows require additional finishes.

Note: This textile is available as a made-to-order pillow.

Characteristics

Content: 100% Mohair

Finish: None

Backing: Cotton

Width: 54" (137cm)

Bolt Size: 26 yards (24 m)

Weight: 26 oz/ly (800 gr/lm)

Country of Origin: Netherlands

Price

Contact your sales representative for pricing.

Maintenance

X-Vacuum or brush lightly to remove surface dust.

Testing

Abrasion: ASTM D4157, 70,000 double rubs Wyzenbeek

Note: Abrasion test results exceeding ACT Performance Guidelines are not an indicator of product lifespan.

Multiple factors affect fabric durability and appearance retention.

Acoustics: ASTM C423, 0.00 NRC 0.60

Flammability: BS 5852 Crib 5

NFPA 260

Lightfastness: AATCC 16.3, 40+ hours



Specifications
Knoll Velvet, 1970
466780

Knoll Textiles

Environmental

Cradle To Cradle Basic Certified
Greenguard Gold Certified
LBC Red List Free
REACH Compliant
Contains Bio-Based Content
FR Free
Free of Intentionally Added PFAS

Warranty

3 years.

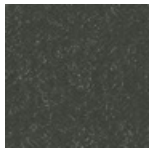
© 1980 Knoll Inc.

Complete product information at knolltextiles.com
800.645.3943

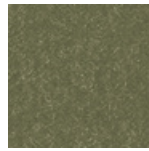
Specifications
Knoll Velvet, 1970
466780



034 Wine



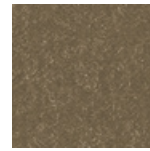
048 Graphite



049 Sage



060 Sandstone



062 Clove



063 Marina



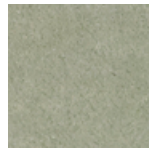
066 Ebony



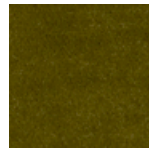
070 Palomino



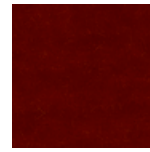
071 Silver



072 Celadon



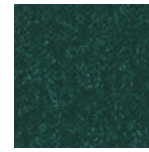
074 Moss



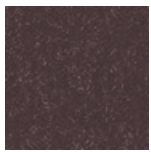
076 Tomato



079 Espresso



081 Teal



082 Currant



083 Bayberry



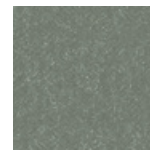
084 Aviator



085 Penny



086 Truffle



087 Swan



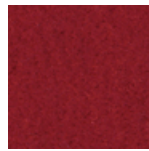
088 Ethereal



089 Amarillo



090 Cloister



091 Inferno



092 Flamenco



093 Cirrus



094 Macaw



095 Orbit



096 Ultraviolet