

Specifications
Sandis
by Proenza Schouler
466706

Application

Seating

Note: This textile is intended for residential use. This textile is available as a made-to-order pillow.

Characteristics

Content: 67% Cotton, 33% Linen

Finish: None

Backing: None

Width: 54" (137cm)

Repeat: 8 3/4" V, 28" H

(22cm V, 71cm H)

Bolt Size: 60 yards (55 m)

Weight: 16 oz/ly (500 gr/lm)

Country of Origin: USA

Price

Contact your sales representative for pricing.

Maintenance

S-Clean with mild, water-free dry cleaning solvent.

Testing

Abrasion: ASTM D4157, 19,000 double rubs Wyzenbeek

Flammability: NFPA 260

Lightfastness: AATCC 16.3, 40+ hours



Specifications
Sandis
by Proenza Schouler
466706

Environmental

Contains Bio-Based Content
Free of Intentionally Added PFAS

Warranty

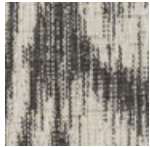
None.

© 2008 Knoll, Inc.

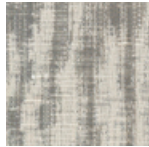
Complete product information at knolltextiles.com
800.645.3943



001 Noble



003 Nightfall



005 Pewter



006 Birch