

## Specifications

### Shrine

300256

#### Application

Walls

#### Characteristics

Content: 100% Cellulose

Finish: PFAS-Free Protective Topcoat

Backing: 85% Post-Consumer Recycled Paper, 15% Paper

Width: 36" (91cm)

Repeat: 21" V

(53cm V), Suitable for non-match application

Bolt Size: 12 yards (11 m)

Weight: 6.7 oz/ly (200 gr/lm)

Traffic: Low Traffic

Country of Origin: Japan

Note: Variations in color and texture are inherent to this textile.

Note on Mold: Intended for use in buildings designed and maintained to avoid moisture on or within walls.

Application must conform to current Installation Guidelines included in each shipment.

#### Price

Contact your sales representative for pricing.

#### Maintenance

X-Vacuum or brush lightly to remove surface dust.



#### Testing

Lightfastness: AATCC 16.3, 40+ hours



# Specifications

## Shrine 300256

### Environmental

- Greenguard Gold Certified
- LBC Red List Free
- REACH Compliant
- Contains Bio-Based Content
- Contains Recycled Content
- Free of Intentionally Added PFAS

### Warranty

None.

© 2025 Maharam

Complete product information at [knolltextiles.com](https://knolltextiles.com)

800.645.3943



001 Antique



002 Meringue



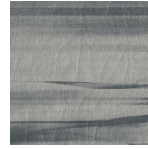
003 Anew



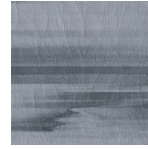
004 Thaw



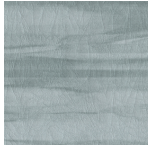
005 Cinereous



006 Apricity



007 Gloam



008 Overflow