

Specifications

Splendid

300151

Knoll Textiles

Application

Walls

Characteristics

Content: 100% Vinyl

Finish: None

Backing: Polyester / Cellulose

Width: 50" (127cm)

Bolt Size: 33 yards (30 m)

Class: Type II

Weight: 20 oz/ly (600 gr/lm)

Traffic: High Traffic

Country of Origin: Great Britain

Note on Mold: Intended for use in buildings designed and maintained to avoid moisture on or within walls.

Application must conform to current Installation Guidelines included in each shipment or available at maharam.com.

Price

Contact your sales representative for pricing.

Maintenance

W-Clean with water-based cleanser.

Testing

Flammability: ASTM E84 Adhered

CAN ULC S102 Adhered



Specifications
Splendid
300151

Warranty
10 years.

© 2019 Knoll, Inc.

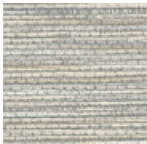
Complete product information at knolltextiles.com
800.645.3943



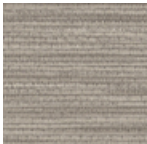
001 Morning Dove



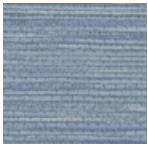
002 Beech



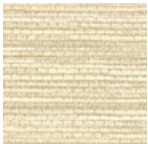
003 Metro



004 Driftwood



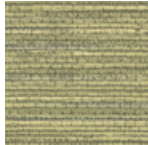
005 Blue Jay



006 Almond



007 Lioness



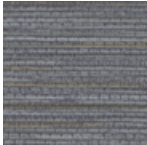
008 Caterpillar



009 Molasses



010 Lovebird



011 Cricket



012 Mystery