



Installation Methods: Parquet, Herringbone, Basketweave, Monolithic, Ashlar

Product Specifications

Construction	Patterned Scroll
Backing	Nexus® Modular
Dye Method	Solution / Yarn Dyed
Fiber Type	Encore® BCF (with recycled content)
Face Weight	22 oz./sqy (746 grams/m2)
Pile Density	7472 oz./y3 (277.07 kg/m3)
Pattern Repeat	N/A
Gauge	1/12 (4.72 rows/cm)
Stitches Per Inch	12 stitches/in (4.72 stitches/cm)
Standard Size	18" x 36" approx. (45.72cm x 91.44cm)
Standard Adhesive	Commercialon Premium Modular and LVT Adhesive
Optional Adhesive	TileTabs
Standard Warranties	Nexus Modular Commercialon Adhesive for Modular Carpet & LVT Encore BCF (with ColorLoc Plus) Nexus FC Cushion
Optional Warranties	Commercialon High Moisture Adhesive for Modular Carpet and LVT Advance Modular Backing Nexus Cushion Modular Adhesive Advance Modular Adhesive Tile Tabs Encore® 100 Fiber

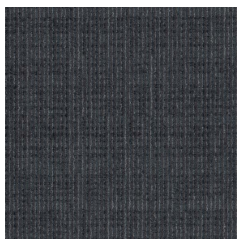
Special Technologies

ProSept® Antimicrobial	Optional
ProTex® Soil Release	Standard
Sentir® Odor-Blocker	Optional

Environmental Specifications & Tests

NSF 140:	Gold Certified
Total Recycled Content	44.2%
Radiant Panel	Class 1
Smoke Density	Less than 450 flaming (ASTM E 662)
Static Test	Less than 3 kv (AATCC-134)
ADA Compliance	Compliant For Accessible Routes
Pill Test	Yes
Lightfastness	Yes

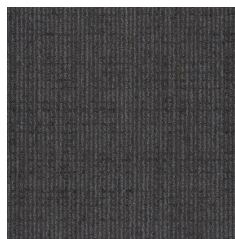
Colorways



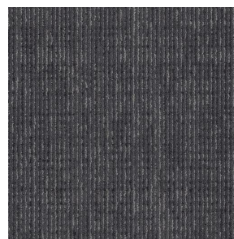
ELN36 Patina



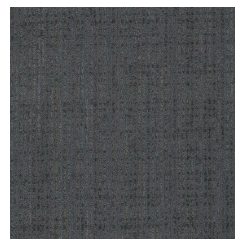
ELN45 Milori Blue



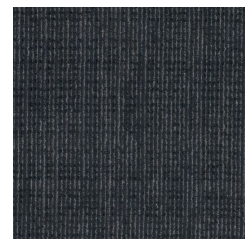
ELN52 Shadow



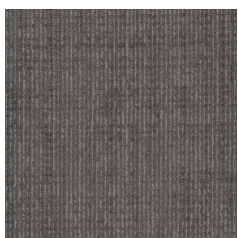
ELN54 Sparrow



ELN56 Anthracite



ELN58 Iron Grey



ELN73 Blonde