

Encore will determine best shipping method, whether blanket-wrapped or cartoned, based on unit quantity and destination. If cartoning is required, a 10% upcharge will be added to each product. Please contact client services for additional information.

CROMO MEETING TABLES | Designed by CLAUDIO BELLINI Studio

Please note that effective April 1st, 2025, a 4.5% tariff surcharge will be applied to the net subtotal on all orders.



PRODUCT FEATURES:

- Available in two heights: 29" and 42".
- Base tube diameter: 1.5".
- Table lengths of 120" and greater will feature a center leg for added stability.
- Ships KD. Assembly required.
- To ship fully assembled, set-up charge will be \$500 List per unit.
- Please note that Canadian shipments are unable to be shipped blanket-wrapped and a 20% cartoning surcharge will always apply.
- Optional power units available. Please refer to page 2 for options.
- All dimensions are nominal.
- Refer to terms and conditions for general information regarding finishes, warranty, freight, complete condition of sales and more.

SPECIFICATIONS:

- Table tops offered in White Oak and Walnut veneer as well as laminate, Fenix®, solid surface and Corian® selections.
- 1" top thickness for veneer, laminate and Fenix® selections. Solid surface and Corian® are affixed to table top surface, increasing the overall table thickness by 1/2".
- Premium wood finish upcharge applies to the following wood finishes. Refer to options section for pricing.
 - Alabaster Oak
 - Super Matte Sable Oak
- For custom wood finishes, please contact client services and add one-time upcharge of \$531 List per color per order.
- Laminate available in all standard colors.
- For custom laminate options, add \$649 List per color per order. Pre-approval required, please contact client services.
- Unless specified, veneer and laminate wood grain direction will run lengthwise on all top sizes.
- Fenix® offered in five standard colorways.
- For non-standard Fenix® colors, please contact client services for pricing.
- Metal base available in standard and premium finishes. See following page for options.
- For custom metal finish colors, please contact client services for pricing.

Encore will determine best shipping method, whether blanket-wrapped or cartoned, based on unit quantity and destination. If cartoning is required, a 10% upcharge will be added to each product. Please contact client services for additional information.

CROMO MEETING TABLES | Designed by CLAUDIO BELLINI Studio

TABLE EDGE SPECIFICATIONS:

- For veneer, edge finish will always match the top finish color, unless otherwise specified.
- For wood grain and solid black laminates, as well as Fenix® Nero Ingo (black), edge will match the top color, unless otherwise specified.
- For all other solid color laminates and Fenix® options, as well as solid surface and Corian®, edge finish will be natural (clear coat) as standard, unless otherwise specified.
- Edges are also available in all standard wood finishes, please specify. For custom edge finishes (e.g. to match standard solid color laminates), please add one-time upcharge of \$531 List per color, per order.
- For Corian® tops, an $\frac{1}{8}$ " reveal will be present.

FENIX COLORS:

- Bianco Kos
- Nero Ingo
- Grigio Efeso
- Grigio Londra
- Grigio Bromo

CORIAN COLORS:

- CWN Designer White
- CLN Linen
- CTD Witch Hazel
- CRC Rain Cloud
- CGQ Grey Onyx
- CSQ Stonique

STANDARD METAL BASE FINISHES:

- 0405 Charcoal Grey
- 0535 Metallic Silver
- 0630 Satin Black

PREMIUM METAL BASE FINISHES:

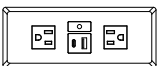
- 0605 Matte Black
- 0705 Matte Cotton
- 0788 Glossy Cotton
- 0805 Oasis
- 0905 Mint
- 1005 Mercury
- 1105 Canary
- 1205 Stone
- 1305 Sage
- 1405 Ice Blue
- 1505 Clay

POWER UNITS:

- Available on all models.
- Black or White finish with 120" electrical cord (no hardwire option available for this series).
- UL listed.



PX3
5.875" W x 2.875" D
One outlet, one USB-A and one USB-C charging port



PX4
7.25" W x 2.875" D
Two outlets, one USB-A and one USB-C charging port




- Refer to page 4 for power unit standard locations.

Encore will determine best shipping method, whether blanket-wrapped or cartoned, based on unit quantity and destination. If cartoning is required, a 10% upcharge will be added to each product. Please contact client services for additional information.

CROMO MEETING TABLES | Designed by CLAUDIO BELLINI Studio

ORDERING REQUIREMENTS:

- Model number
- Surface material
- Surface finish
- Metal finish
- Options, as applicable

MODEL	DIMENSIONS	VENEER (-V)	LAMINATE (-L)	FENIX (-FE)	SOLID SURFACE (-SF)	CORIAN (-CO)	WEIGHT <small>veneer and laminate/Fenix tables only</small>
							
29" H, Single Piece Top							
9025-428429	42" D x 84" L x 29" H	4,718	4,120	5,248	6,840	9,094	126 lbs.
9025-429629	42" D x 96" L x 29" H	5,130	4,448	5,737	7,556	10,132	137 lbs.
9025-488429	48" D x 84" L x 29" H	5,041	4,369	5,658	7,477	10,053	145 lbs.
9025-489629	48" D x 96" L x 29" H	5,559	4,801	6,274	8,353	11,297	151 lbs.
							
29" H, Two-Piece Top							
9025-4212029	42" D x 120" L x 29" H	6,244	5,422	7,033	9,307	12,527	200 lbs.
9025-4214429	42" D x 144" L x 29" H	7,074	6,102	8,035	10,764	14,628	230 lbs.
9025-4812029	48" D x 120" L x 29" H	6,737	5,809	7,650	10,249	13,929	219 lbs.
9025-4814429	48" D x 144" L x 29" H	7,711	6,612	8,821	11,940	16,356	245 lbs.
							
42" H, Single Piece Top							
9025-246042	24" D x 60" L x 42" H	3,432	3,144	3,605	4,254	8,132	82 lbs.
9025-247242	24" D x 72" L x 42" H	3,754	3,423	3,976	4,755	6,805	89 lbs.
9025-249642	24" D x 96" L x 42" H	4,183	3,766	4,503	5,542	8,049	106 lbs.
9025-306042	30" D x 60" L x 42" H	3,770	3,429	4,005	4,817	8,347	90 lbs.
9025-307242	30" D x 72" L x 42" H	4,124	3,729	4,420	5,394	9,657	98 lbs.
9025-309642	30" D x 96" L x 42" H	4,632	4,131	5,052	6,351	7,204	120 lbs.
9025-366042	36" D x 60" L x 42" H	4,109	3,832	4,523	5,497	6,468	98 lbs.
9025-367242	36" D x 72" L x 42" H	4,494	4,035	4,864	6,033	7,420	108 lbs.
9025-369642	36" D x 96" L x 42" H	5,066	4,479	5,584	7,143	8,301	134 lbs.

OPTIONS

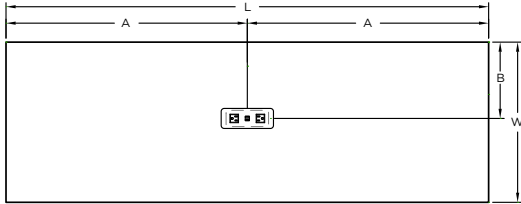
-PFM02	Premium Metal Finish	\$101
-PFW06	Premium Wood Finish	\$311
-PX3-()	Power Matrix 3 (one power, one USB-A, one USB-C)	\$534
-PX4-()	Power Matrix 4 (dual power, one USB-A, one USB-C)	\$559

Encore will determine best shipping method, whether blanket-wrapped or cartoned, based on unit quantity and destination. If cartoning is required, a 10% upcharge will be added to each product. Please contact client services for additional information.

CROMO MEETING TABLES | Designed by CLAUDIO BELLINI Studio

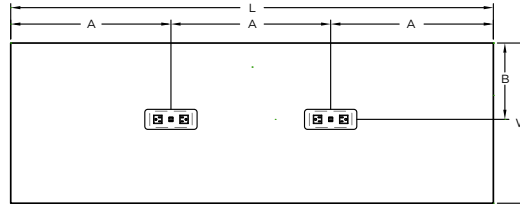
Power Unit Standard Locations

1 Power Unit



D x L	A	B
24" x 60"	30"	12"
24" x 72"	36"	12"
24" x 96"	48"	12"
30" x 60"	30"	15"
30" x 72"	36"	15"
30" x 96"	48"	15"
36" x 60"	30"	18"
36" x 72"	36"	18"
36" x 96"	48"	18"
42" x 84"	42"	21"
42" x 96"	48"	21"
48" x 84"	42"	24"
48" x 96"	48"	24"

2 Power Units



D x L	A	B
24" x 60"	20"	12"
24" x 72"	24"	12"
24" x 96"	32"	12"
30" x 60"	20"	15"
30" x 72"	24"	15"
30" x 96"	32"	15"
36" x 60"	20"	18"
36" x 72"	24"	18"
36" x 96"	32"	18"
42" x 84"	28"	21"
42" x 96"	32"	21"
42" x 120"	40"	21"
42" x 144"	48"	21"
48" x 84"	28"	24"
48" x 96"	32"	24"
48" x 120"	40"	24"
48" x 144"	48"	24"

For tables 120" and over, single power unit cannot be centered on tops due to center base placement. Please specify location as applicable.